





A new, forward-thinking mindset  
is at play, rooted in history.



It's a moment of convergence. That spark of realization that everything  
is falling into place. These moments happen in our culture, they  
happen to each of us individually, and they happen to places, too. In  
Norwalk, right now is one of those moments. A new, forward-thinking  
urban mindset is at play, rooted deep in rich history.

**And it all comes together in one spot at Sono Central.**







The name says it all. This is SONO at its most central. In this historic location, where people once came off the train seeking entertainment and culture all on one renowned block, the new heart of SONO has emerged. SONO Central offers that magical combination of convenience, luxury, and space. Here, art and architecture converge with modern metal and wood, textures reminiscent of our industrial past. Here, textures come together as well—textures that evoke our industrial past with the interior design details of metal and wood. With this resurgence, elevated by its proximity to The Platform next door, we will all meet once again—to dine outside, be together on the green, step right onto the train, and come home to expansive, artfully designed residences.



**This is Norwalk's 'all in' moment.  
Let it be yours.**





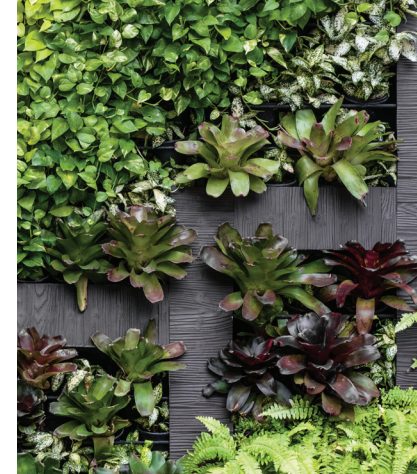


## ALL IN ONE | Amenities



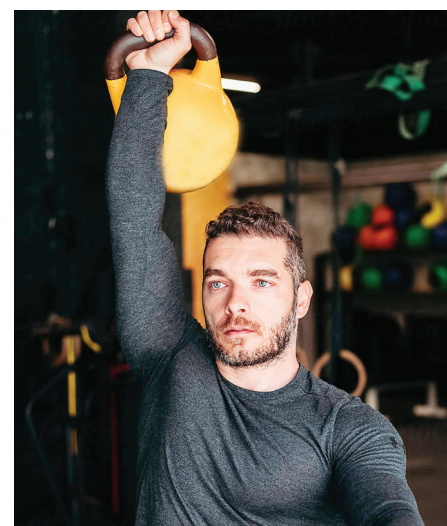
At Sono Central, there is one impressive space after the next. Here, art and architecture converge with modern metal & wood, textures reminiscent of our industrial past. The garden courtyard with pool, cabanas, and outside social lounges, grilling bars and dining space. There is even a bocce ball court; yes, you have the keys the ultimate Oasis. Year round you'll enjoy a rock climbing wall, spin, strength training and fitness studios, plus an amazing kitchen in the Great Room with a coworking lounge.





## Amenities

- Right outside your front door is the new central meeting place for SONO—a large courtyard with plenty of seating so you can relax, work outdoors, dine or just people-watch.
- Monroe Street will have a variety of shops, a restaurant, café and as well as the corner office and studio spaces available in historically renovated 18 Monroe.
- SONO train station, you're just a three minute walk.
- Summer at the Oasis. Sunbathe, play bocce or take a dip in the refreshing pool and catch rays on the perfectly positioned sundeck with courtyard.
- Grill and gather with friends poolside with modern cabanas, loungers, dining tables and at the bar & grill kitchens.
- Entertain like a pro in the The Great Room, equipped with a state-of-the-art entertaining kitchen, theater-size screen, and lots of comfortable seating.
- The ultra-luxe lounge and mezzanine is perfect for co-working with a conference table for meetings, and all the office essentials including coffee bar.
- Exercise all out; featuring a spin studio, yoga room and a large space for cardio & strength training.
- Count on convenience service with:
  - Controlled access and a gated attached garage parking
  - EV charging on-site
  - On-site management & maintenance





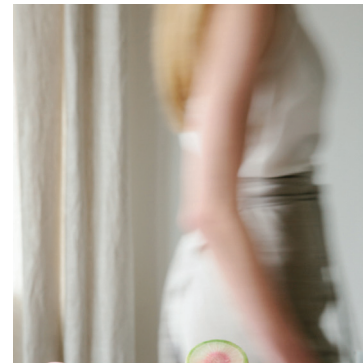
# ALL THE BEST

## Interiors



- Impeccably designed studio, one, and two bedroom floor plans
  - Select floor plans with kitchen islands or breakfast bars
  - Select floor plans with outdoor terraces
- Soaring 9-foot ceilings and large windows
- Rich espresso wood plank vinyl flooring in main living, bedroom & bathrooms
- Gourmet kitchens with stainless steel, energy-efficient appliances, including smooth cooktop, microwave, dishwasher & refrigerator w/ice maker
- Pristine porcelain tile bathrooms feature sleek, spa-like water fixtures & lighting, walk-in showers & frameless glass door
- Independently controlled, efficient heat & air conditioning
- Generous closet space and walk-in closets
- Mudroom and gallery foyers available\*
- Large outdoor terraces with city and oasis views\*
- Convenient washer & dryer provided in each home

\*in select homes





# ALL HERE | Location



- **A 3 MINUTE WALK** to the South Norwalk Train Station; easy access to New York City
- **STEP OUTSIDE YOUR DOOR** and walk to everything that vibrant Washington Street Historic District offering: world-class restaurants, shopping, museums and more
- **10 MINUTE WALK** or **4 MINUTE DRIVE** to The SONO Collection, featuring 99 stores from A to Z (Apple to Zara) and 15+ restaurants
- **10 MINUTE DRIVE** to Stew Leonard's Market and 8 minute drive to Costco Wholesale
- **20 MINUTE DRIVE** to Stamford, 40 minute drive to New Haven, 1.5 hour drive to New York City
- **LESS THAN A 5 MINUTE DRIVE** to wide open green spaces in both Flax Hill Park and Veteran's Memorial Park
- **LESS THAN A 5 MINUTE DRIVE** to Norwalk Aquarium or a 5-10 minute walk to the waterfront and local marinas
- **LESS THAN 10 MINUTE DRIVE** to Calf Pasture Beach with its  $\frac{3}{4}$  mile stretch of sun and sand, and a large variety of recreational activities from volleyball courts to skate park

**SONO**  
**CENTRAL**

10 MONROE | NORWALK, CT 06854 | [SonoCentral.com](http://SonoCentral.com) | 203.857.9366

