

Champlain

VILLAGE URBAIN • URBAN VILLAGE



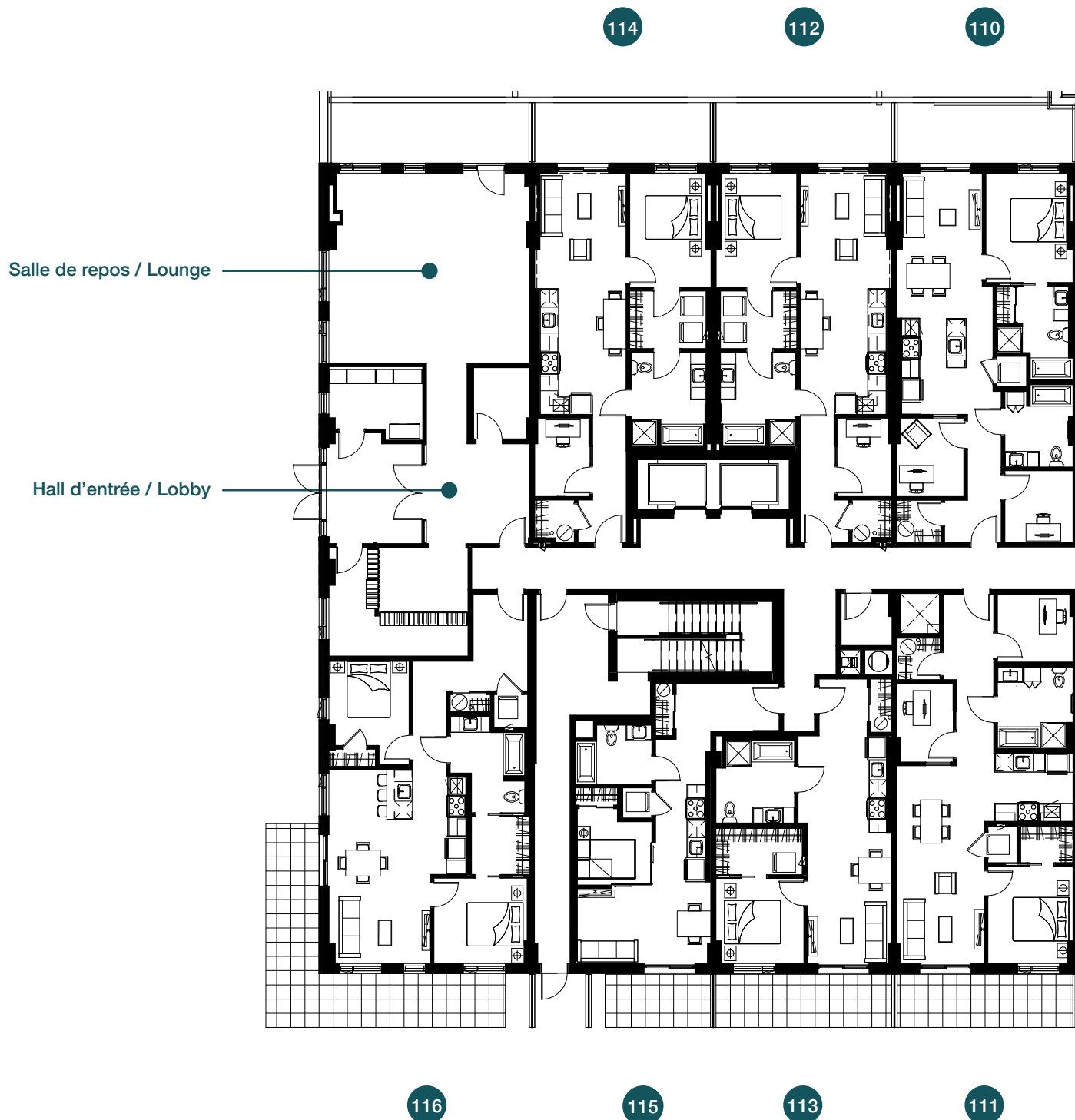
brigil





Rez-de-chaussée / Ground floor

IMPASSE DU GRIFFON



Les spécifications et les plans de plancher peuvent changer sans préavis.
SEOO Specifications and floorplans subject to change without notice. E.&O.E.

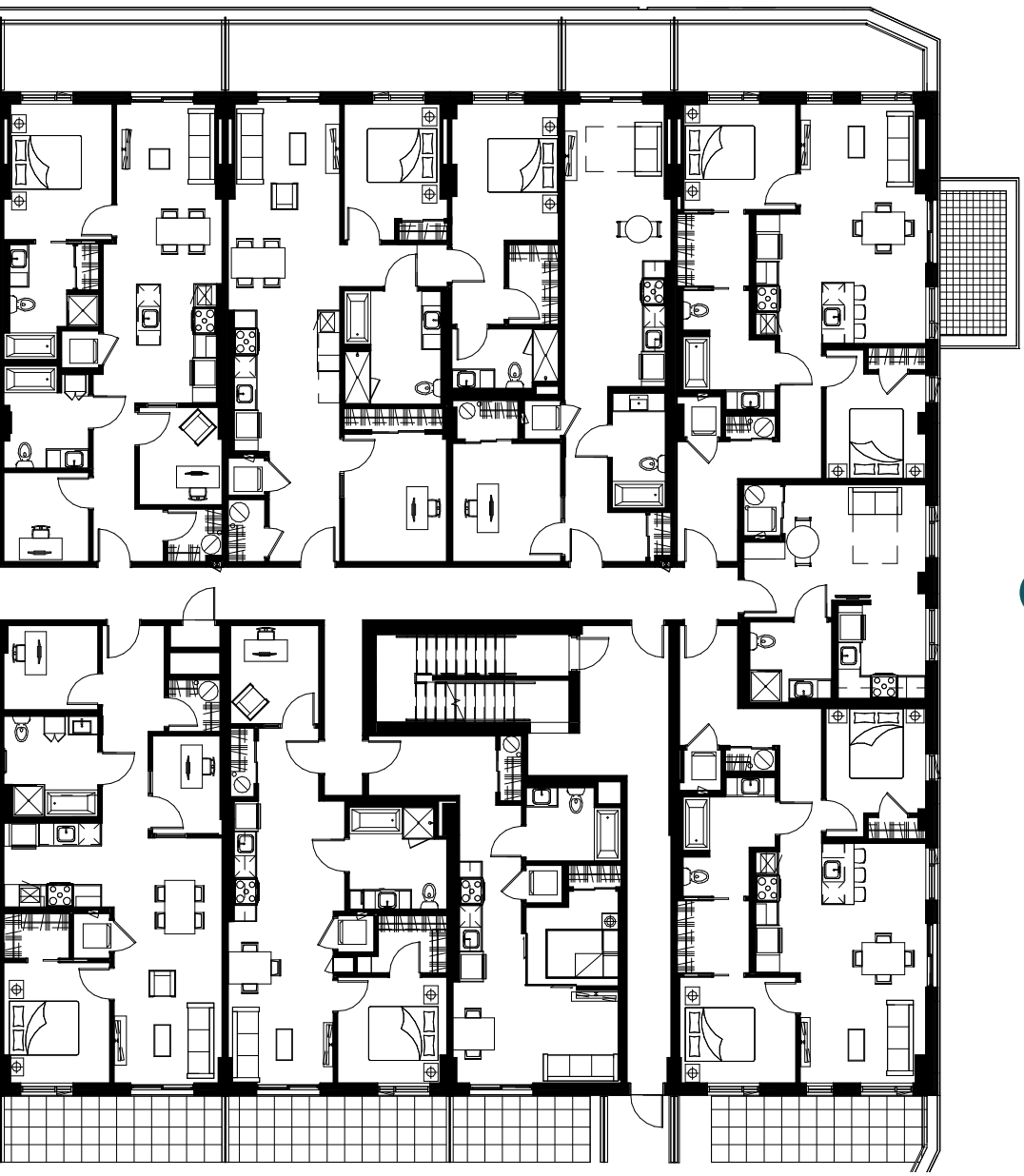


108

106

104

102



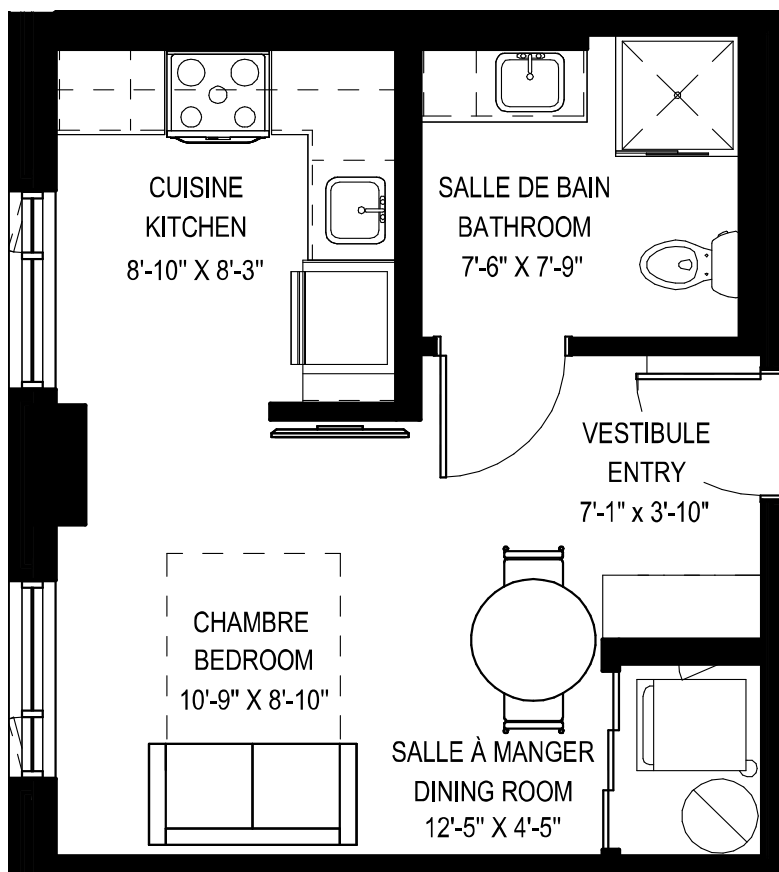
101

109

107

105

103

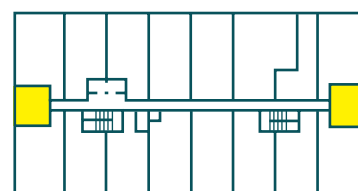


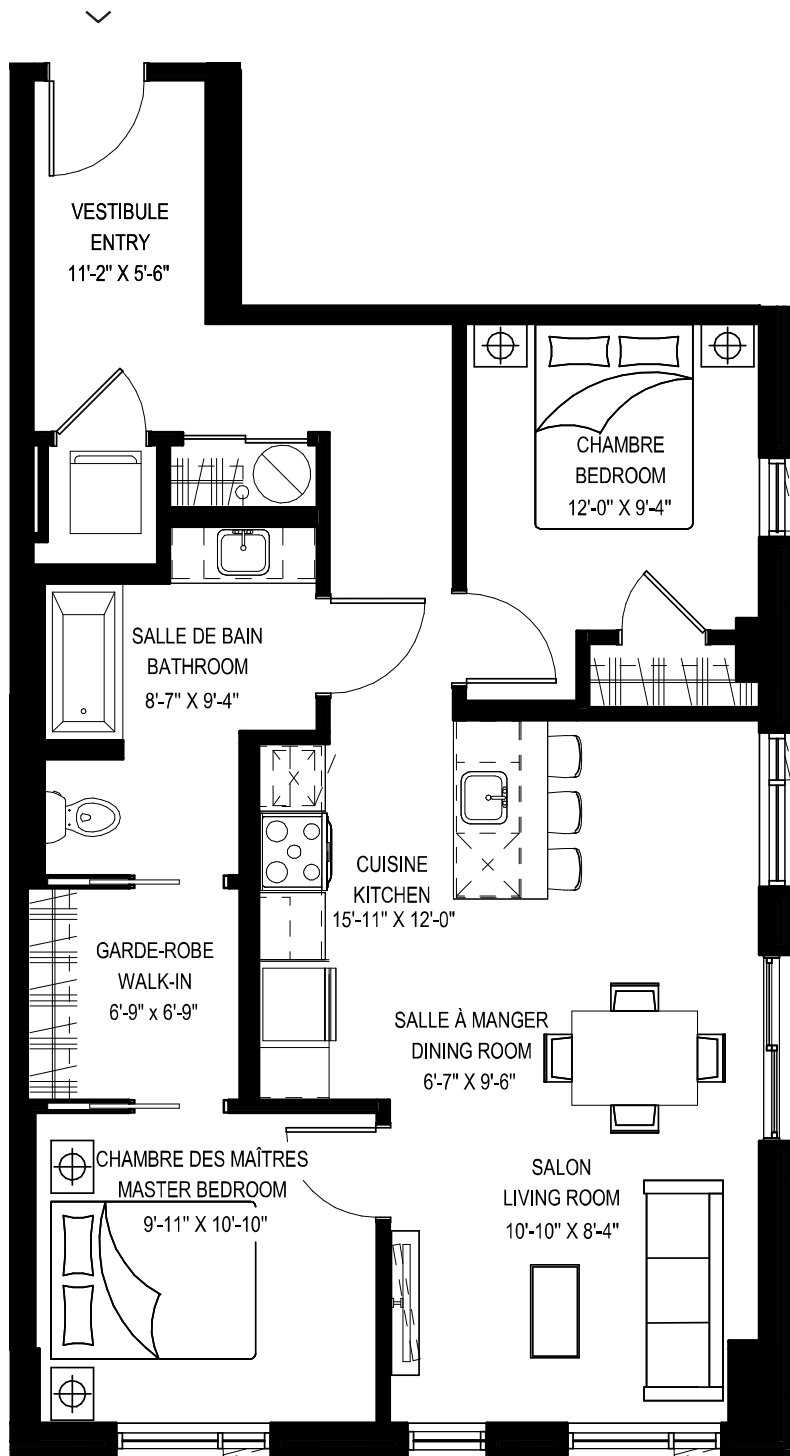
Rez-de-chaussée au 3^e étage
Ground floor to 3rd floor

STUDIO

UNITÉS • UNITS Superficie • Area
101, 201, 217, 317

386 pi² / sq. ft.





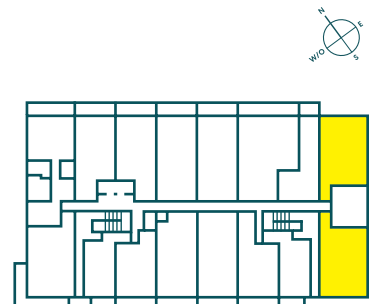
Rez-de-chaussée au 3^e étage
Ground floor to 3rd floor

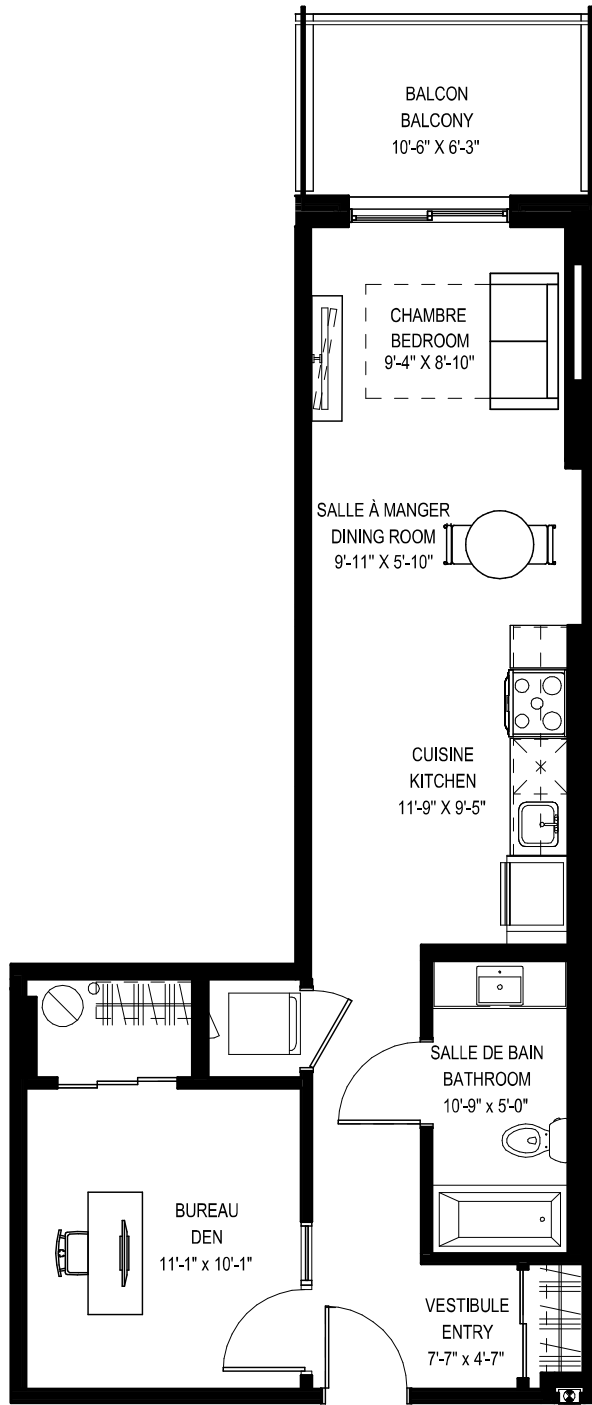
2 CHAMBRES • 2 BEDROOMS

UNITÉS • UNITS Superficie • Area

102, 103, 202, 203,
216, 218, 302, 316

947 pi² / sq. ft.





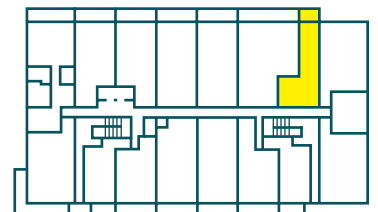
Rez-de-chaussée
Ground floor

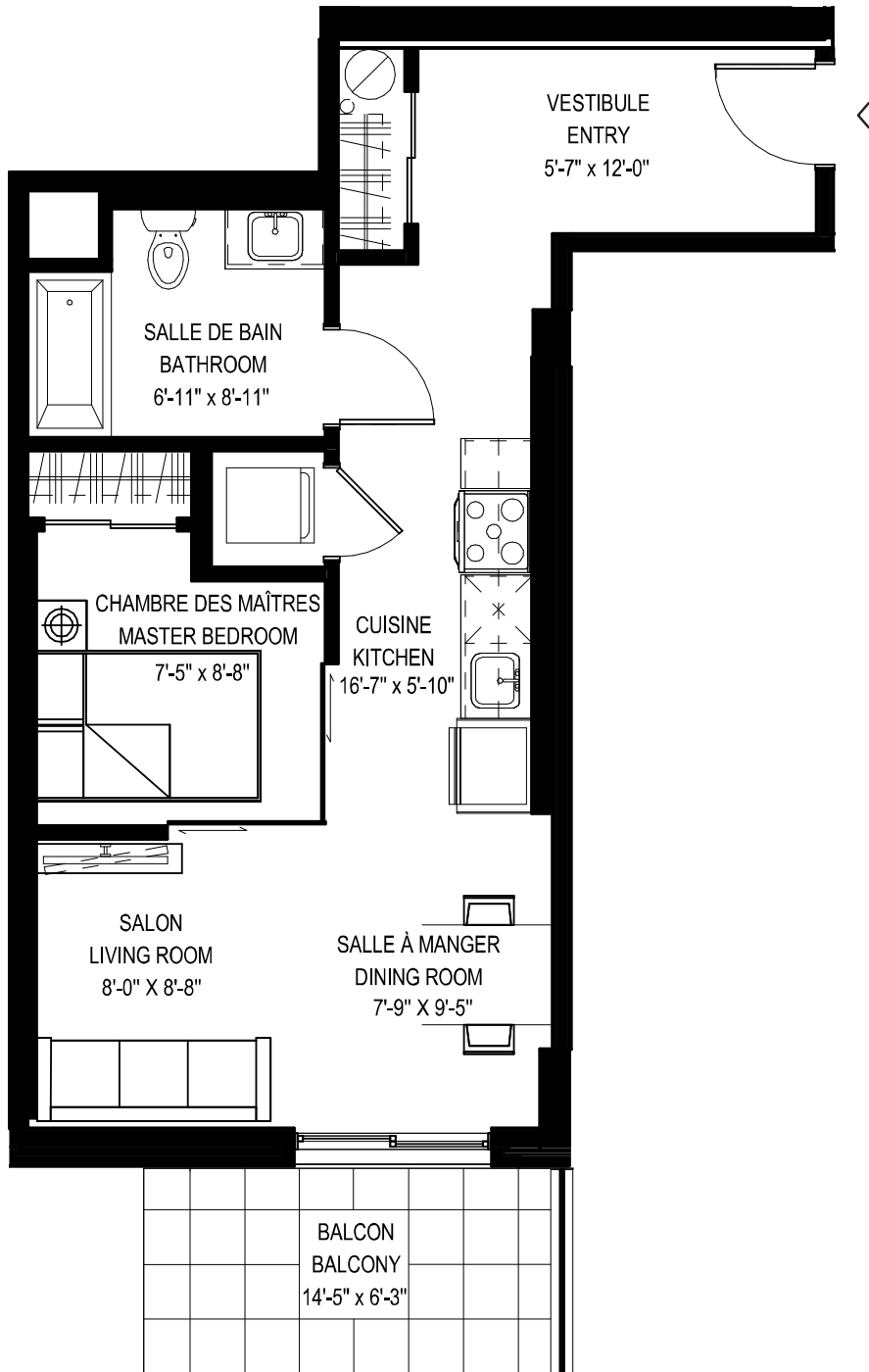
1 CHAMBRE INTÉRIEURE • 1 INTERIOR BEDROOM

UNITÉ • UNIT
104

Superficie • Area
Terrasse • Terrace
Total

632 pi² / sq. ft.
70 pi² / sq. ft.
702 pi² / sq. ft.





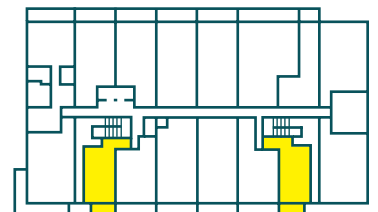
Rez-de-chaussée
Ground floor

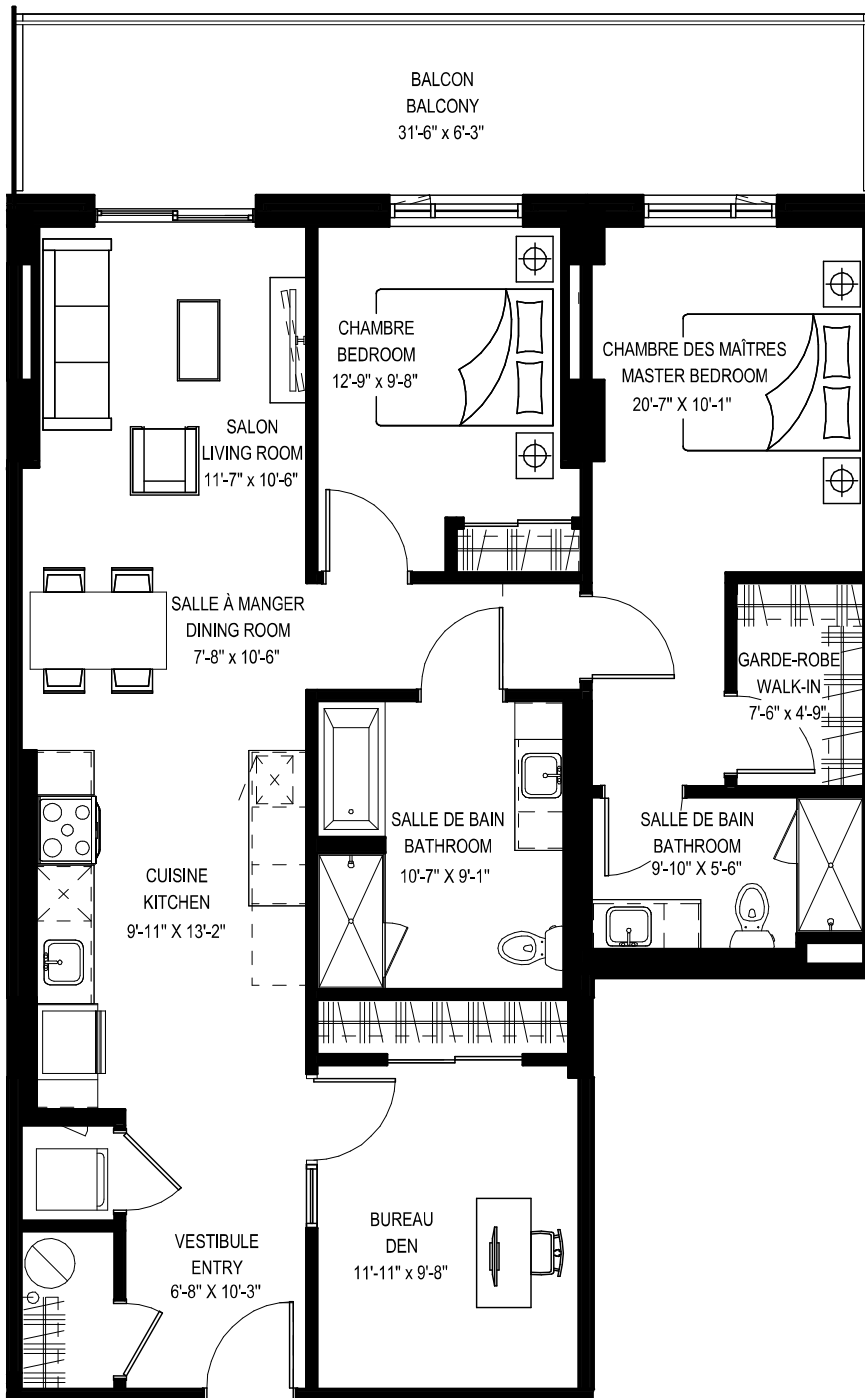
1 CHAMBRE INTÉRIEURE • 1 INTERIOR BEDROOM

UNITÉS • UNITS
105, 115

Superficie • Area
Terrasse • Terrace
Total

587 pi² / sq. ft.
90 pi² / sq. ft.
677 pi² / sq. ft.





Rez-de-chaussée
Ground floor

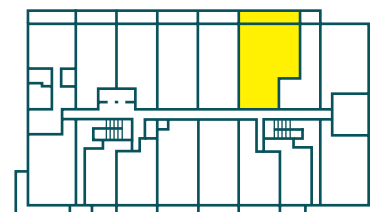
3 CHAMBRES* • 3 BEDROOMS*

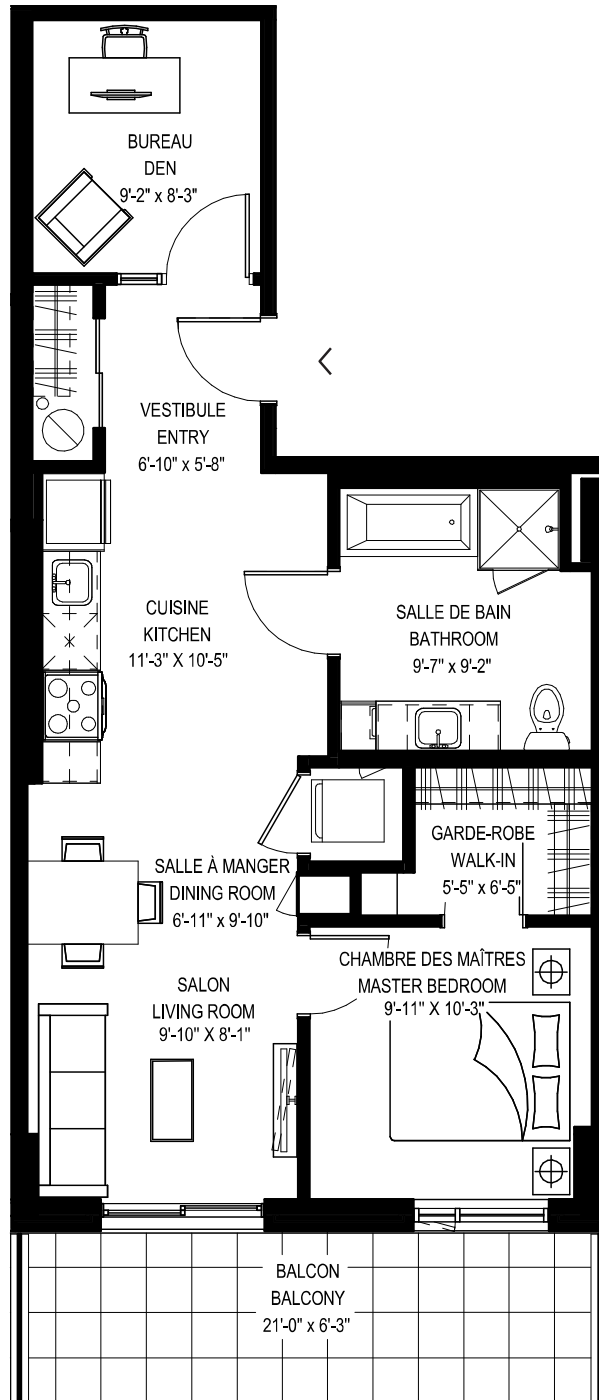
*La 3^e chambre est une chambre intérieure. *The 3rd bedroom is an interior room

UNITÉ • UNIT
106

Superficie • Area
Terrasse • Terrace
Total

1 229 pi² / sq. ft.
210 pi² / sq. ft.
1 439 pi² / sq. ft.





Rez-de-chaussée
Ground floor

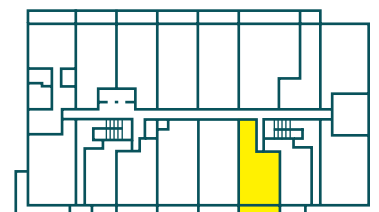
2 CHAMBRES* • 2 BEDROOMS*

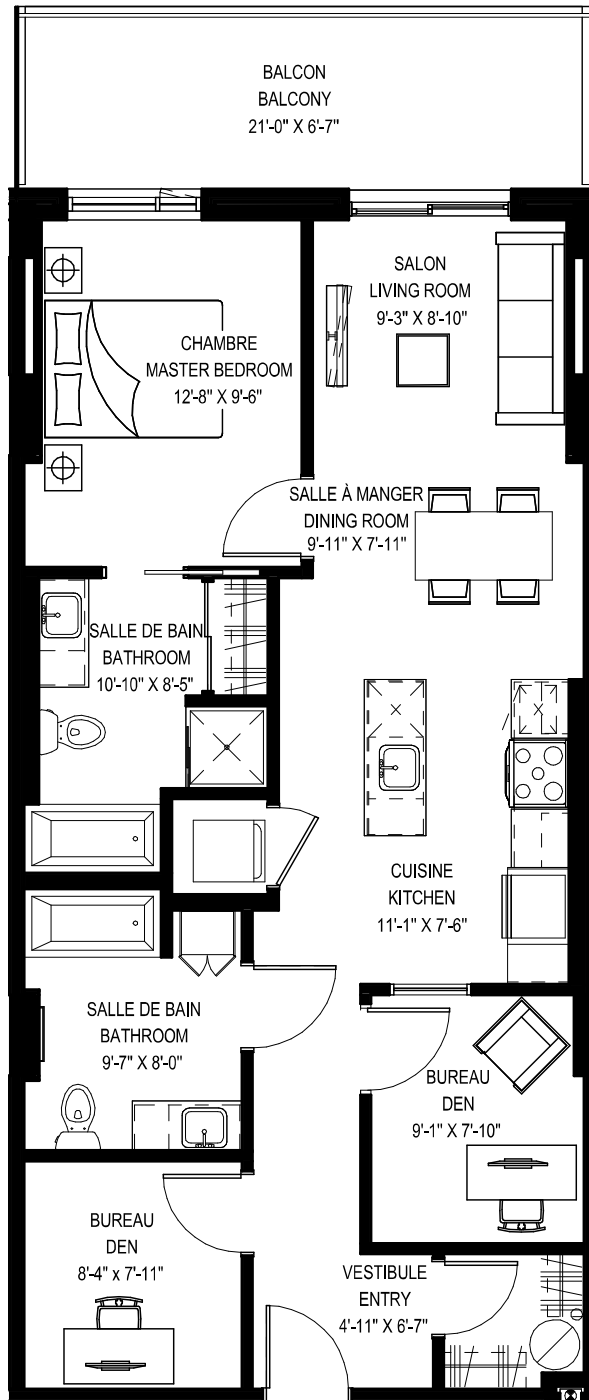
*La 2^e chambre est une chambre intérieure. *The 2nd bedroom is an interior room

UNITÉ • UNIT
107

Superficie • Area
Terrasse • Terrace
Total

736 pi² / sq. ft.
131 pi² / sq. ft.
867 pi² / sq. ft.





Rez-de-chaussée
Ground floor

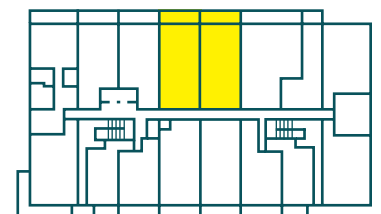
2 CHAMBRES* + BUREAU • 2 BEDROOMS* + DEN

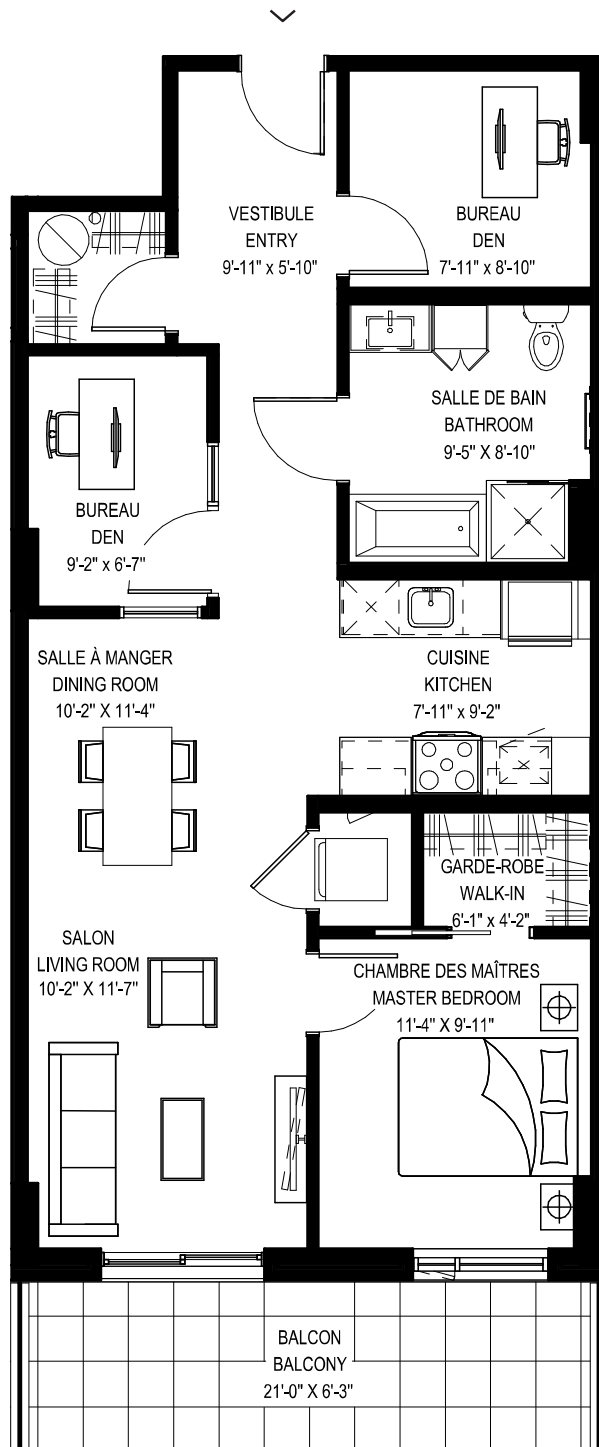
*La 2^e chambre est une chambre intérieure. *The 2nd bedroom is an interior room

UNITÉS • UNITS
108, 110

Superficie • Area
Terrasse • Terrace
Total

930 pi² / sq. ft.
140 pi² / sq. ft.
1 070 pi² / sq. ft.





Rez-de-chaussée
Ground floor

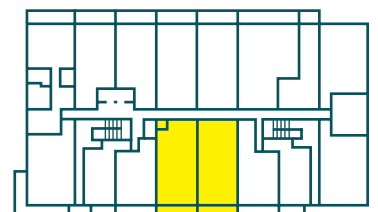
2 CHAMBRES* + BUREAU • 2 BEDROOMS* + DEN

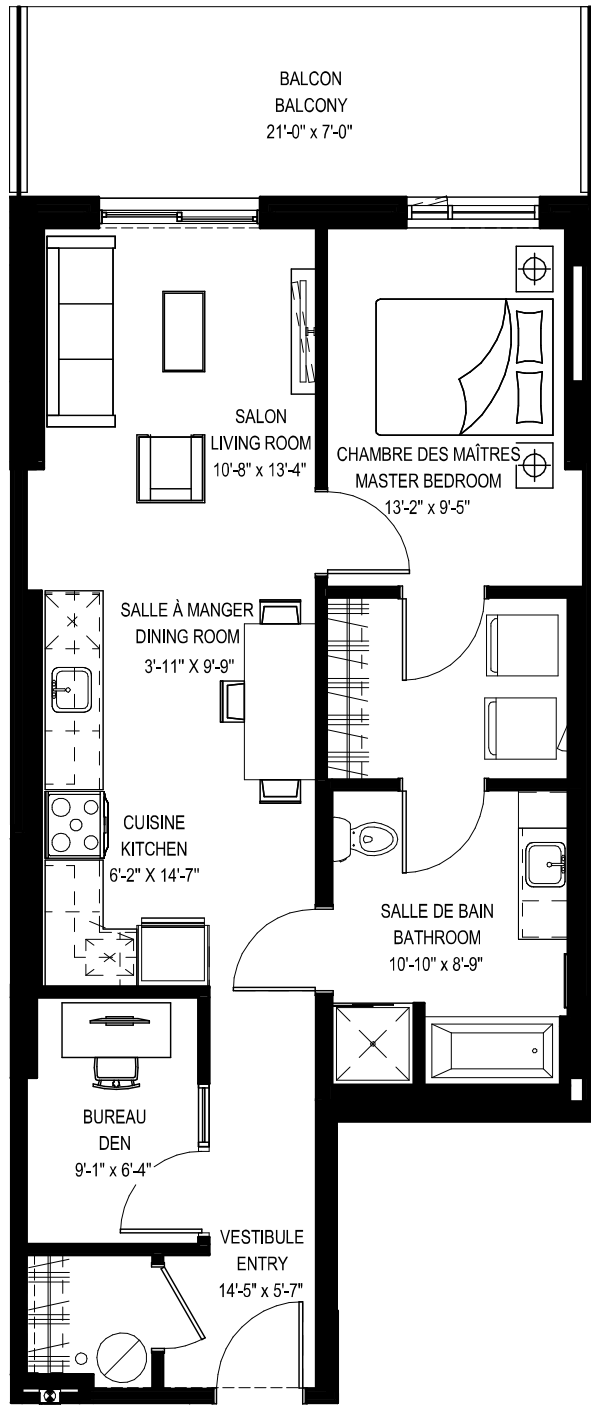
*La 2^e chambre est une chambre intérieure. *The 2nd bedroom is an interior room

UNITÉS • UNITS
109, 111

Superficie • Area
Terrasse • Terrace
Total

901 pi² / sq. ft.
131 pi² / sq. ft.
1 032 pi² / sq. ft.





Rez-de-chaussée
Ground floor

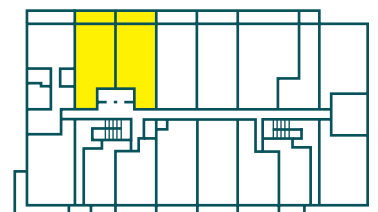
2 CHAMBRES* • 2 BEDROOMS*

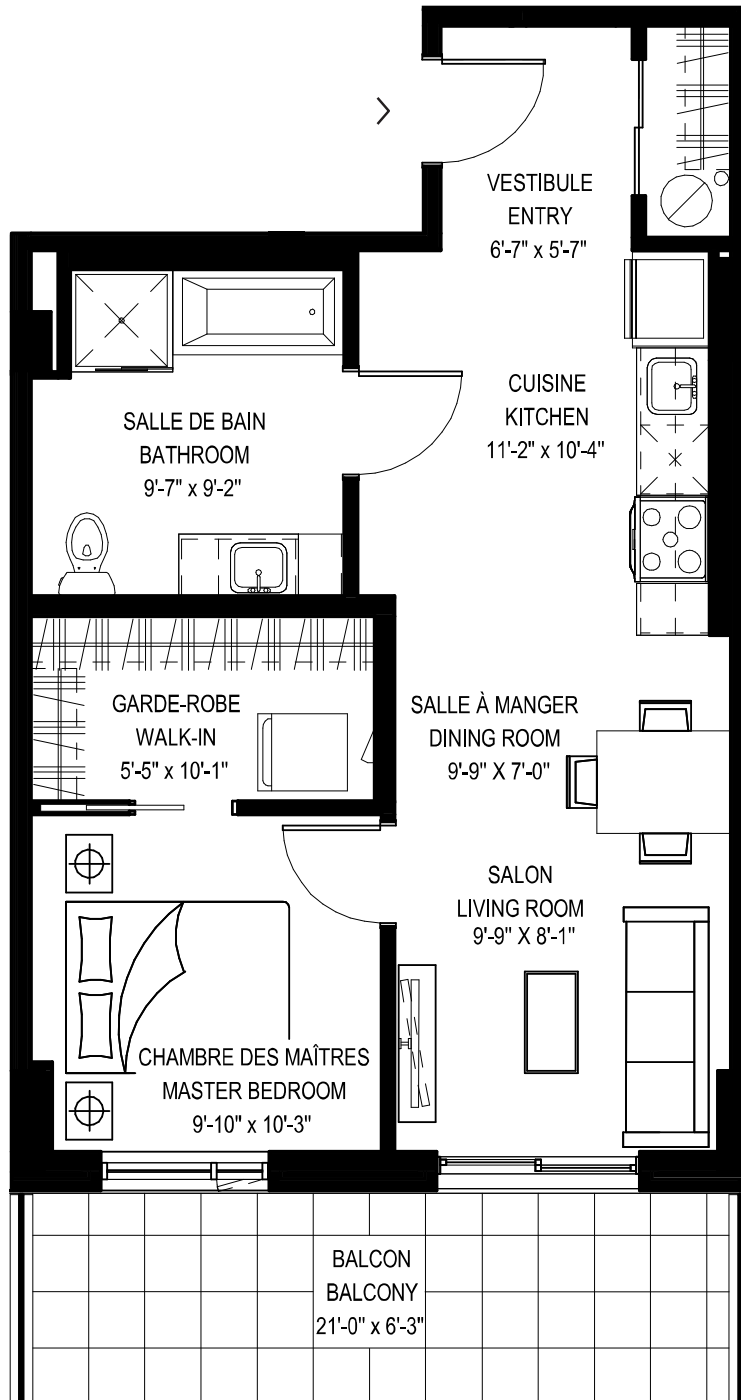
*La 2^e chambre est une chambre intérieure. *The 2nd bedroom is an interior room

UNITÉS • UNITS
112, 114

Superficie • Area
Terrasse • Terrace
Total

843 pi² / sq. ft.
140 pi² / sq. ft.
983 pi² / sq. ft.





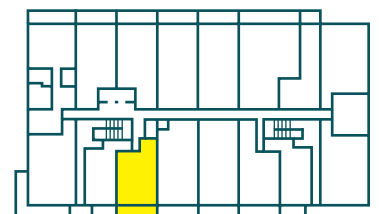
Rez-de-chaussée
Ground floor

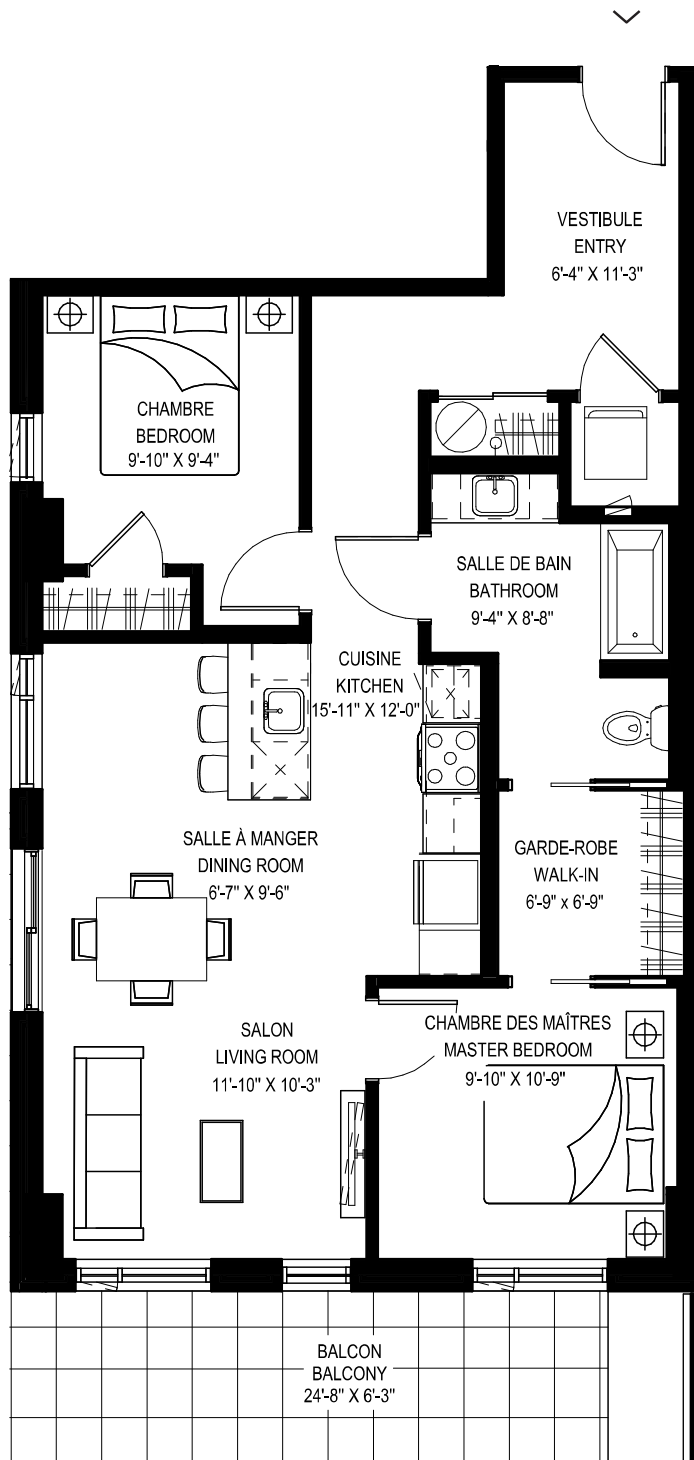
1 CHAMBRE • 1 BEDROOM

UNITÉ • UNIT
113

Superficie • Area
Terrasse • Terrace
Total

644 pi² / sq. ft.
131 pi² / sq. ft.
775 pi² / sq. ft.





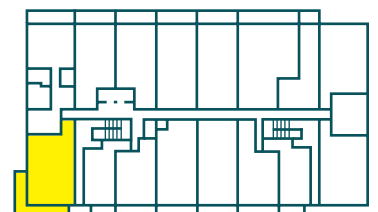
Rez-de-chaussée
Ground floor

2 CHAMBRES • 2 BEDROOMS

UNITÉ • UNIT
116

Superficie • Area
Terrasse • Terrace
Total

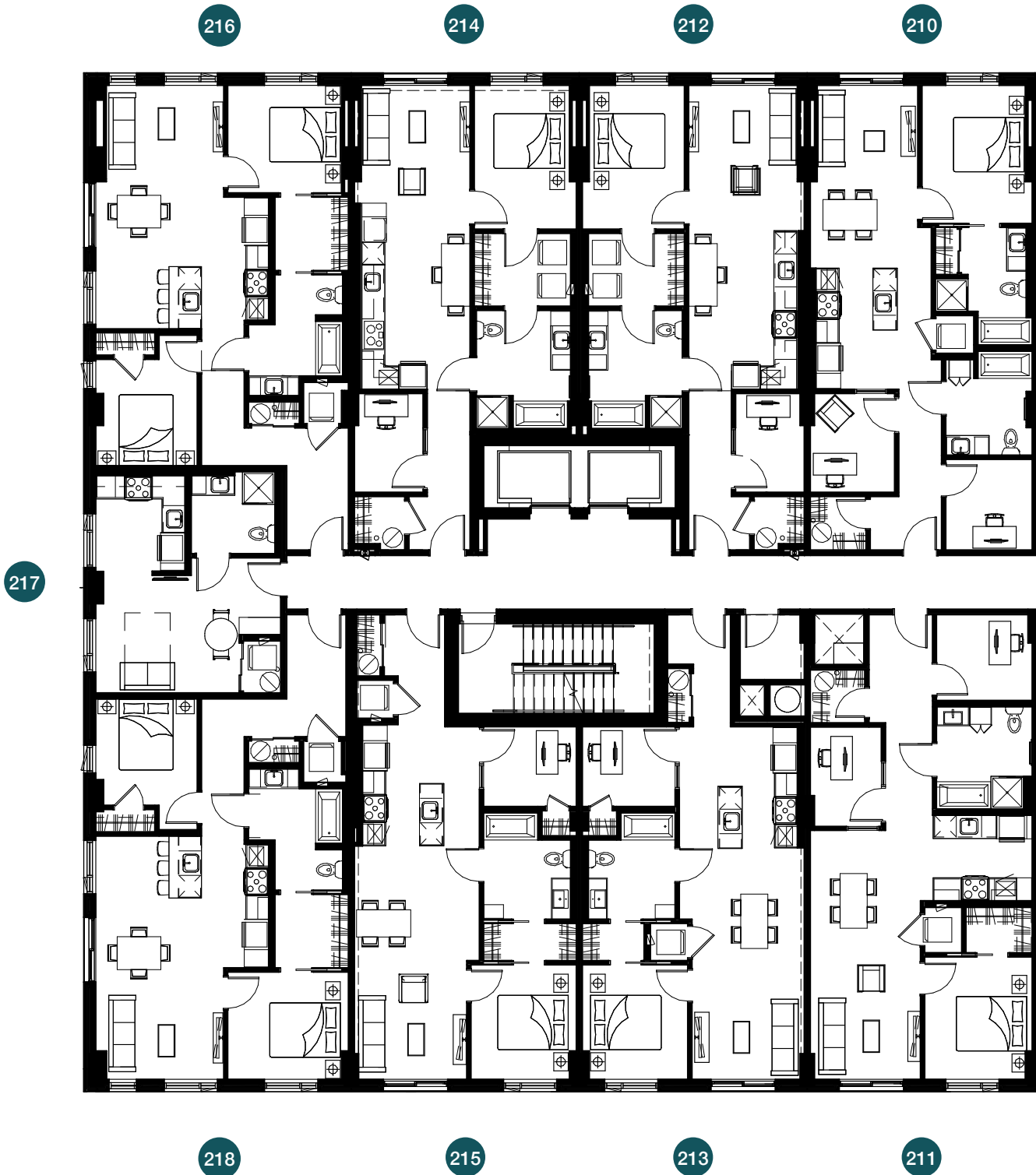
966 pi² / sq. ft.
154 pi² / sq. ft.
1 120 pi² / sq. ft.





2^e étage / 2nd floor

IMPASSE DU GRIFFON



Les spécifications et les plans de plancher peuvent changer sans préavis.
SEO0 Specifications and floorplans subject to change without notice. E.&O.E.

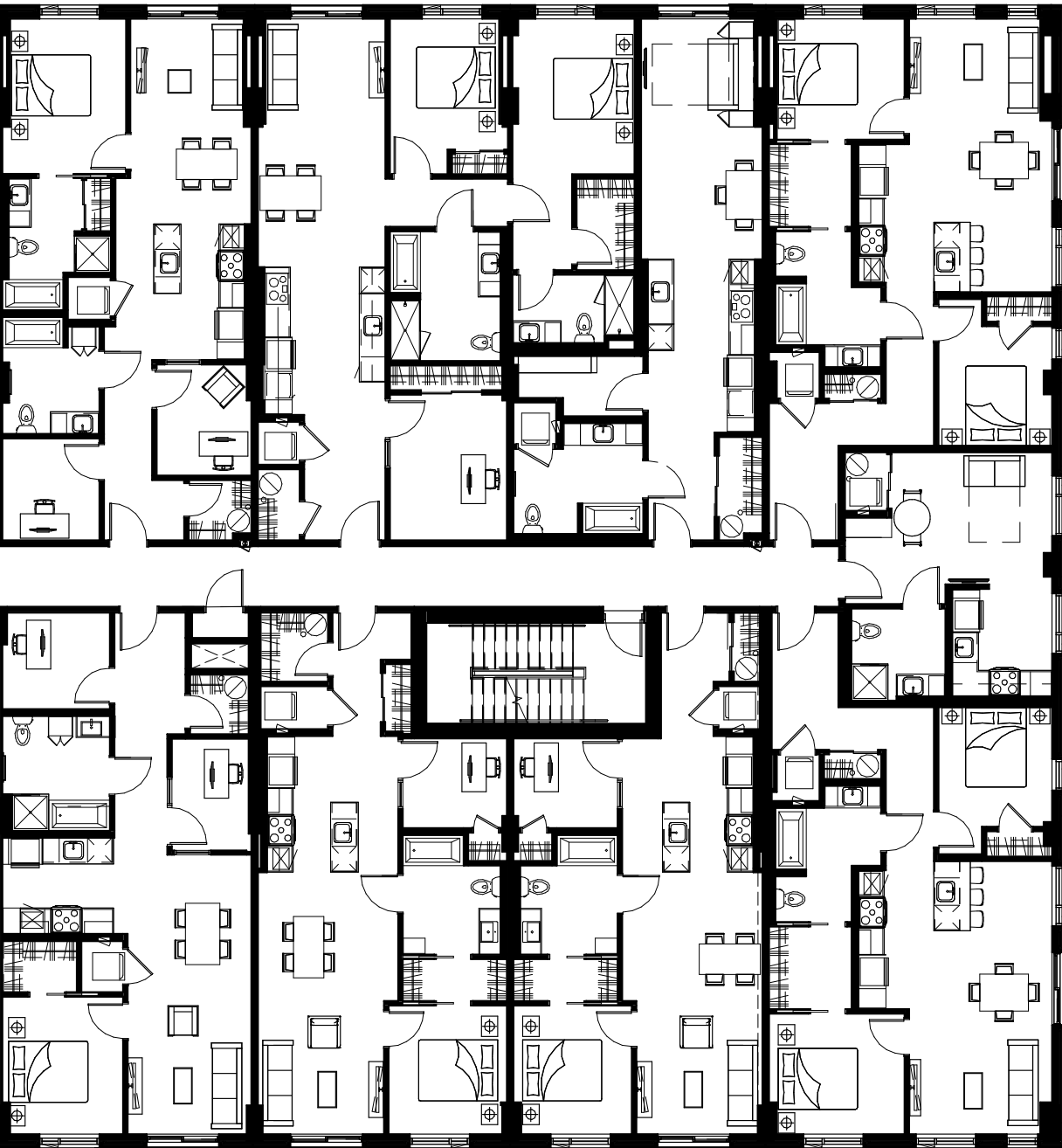


208

206

204

202



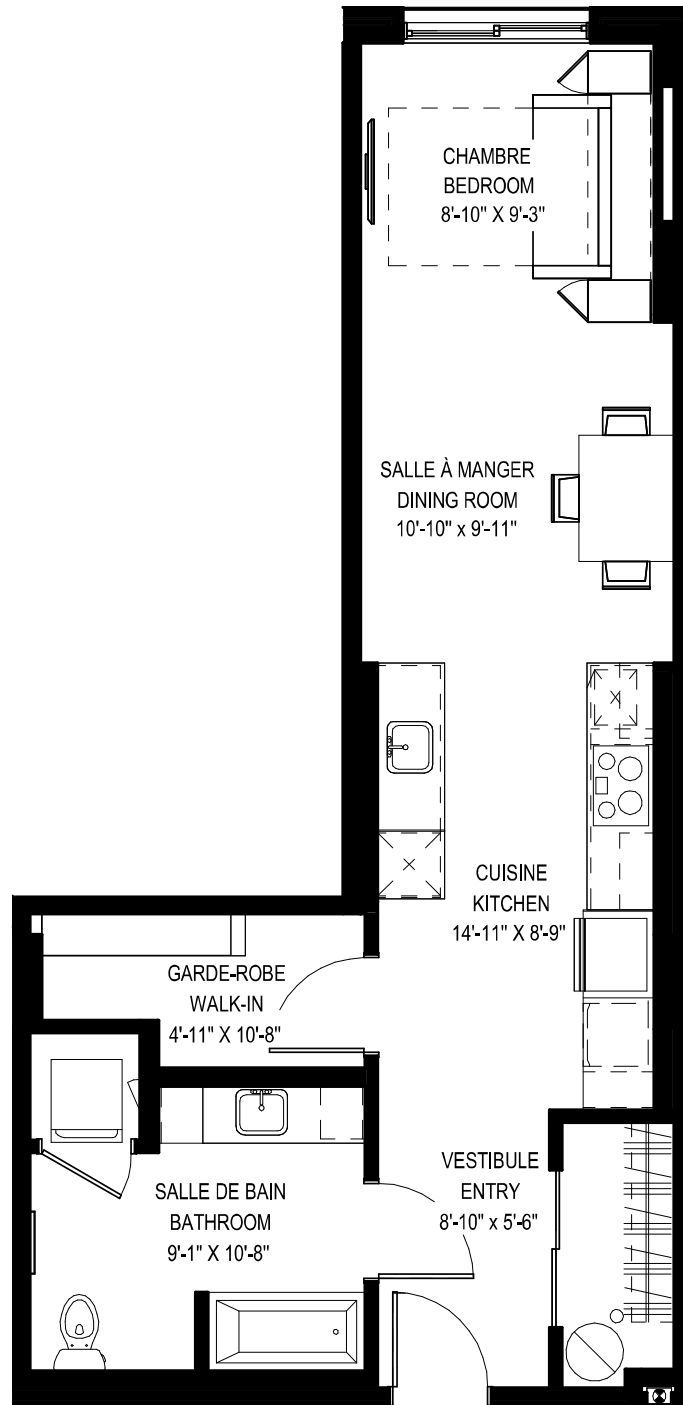
201

209

207

205

203



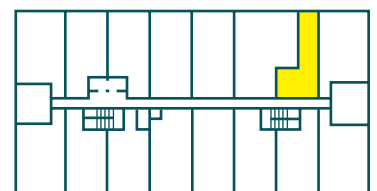
2^e étage
2nd floor

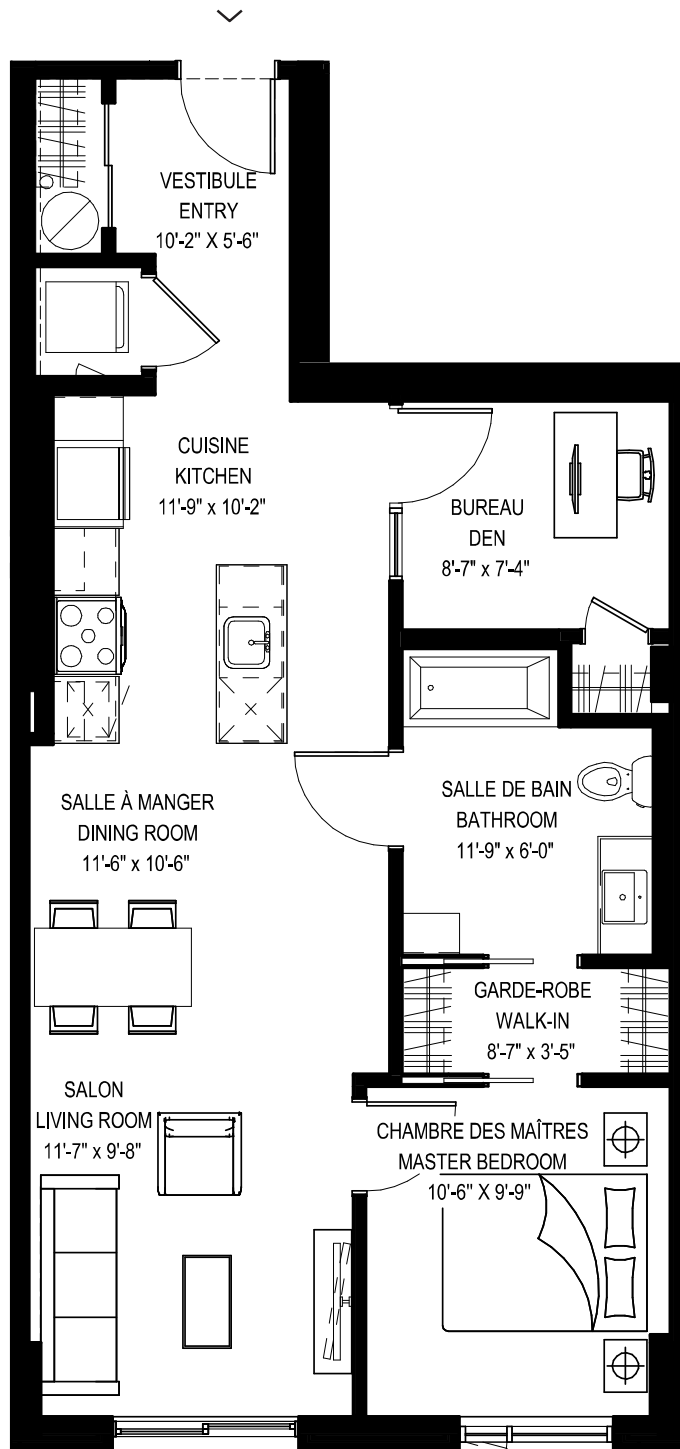
STUDIO

UNITÉ • UNIT
204

Superficie • Area

632 pi² / sq. ft.





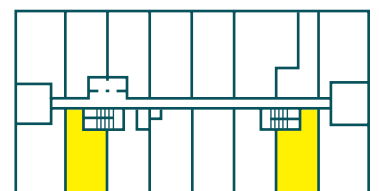
2^e étage
2nd floor

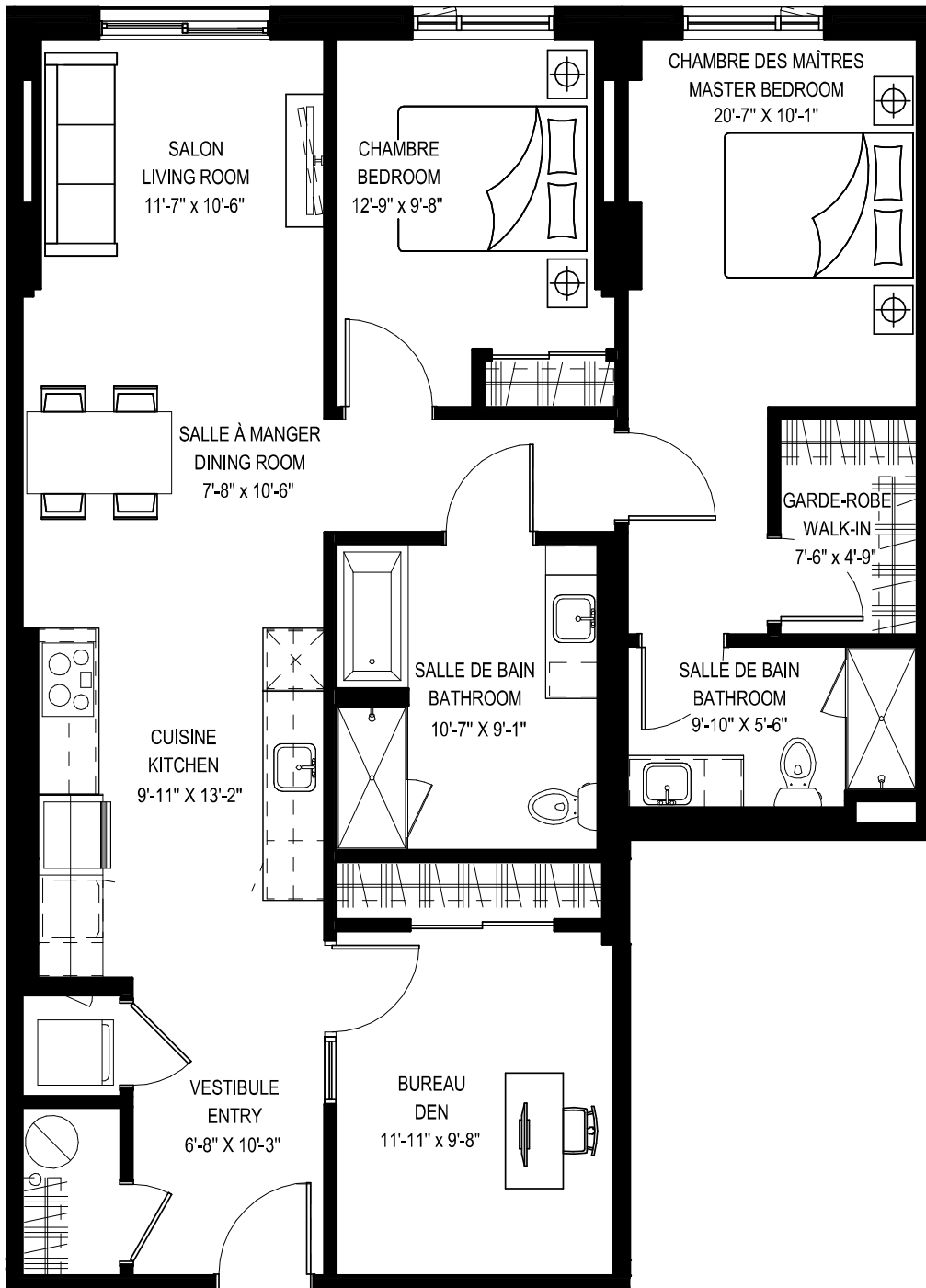
2 CHAMBRES* • 2 BEDROOMS*

*La 2^e chambre est une chambre intérieure. *The 2nd bedroom is an interior room

UNITÉS • UNITS Superficie • Area
205, 215

824 pi² / sq. ft





2^e étage
2nd floor

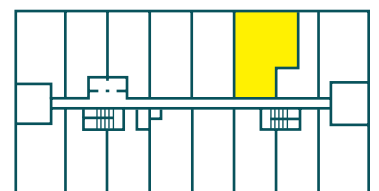
3 CHAMBRES* • 3 BEDROOMS*

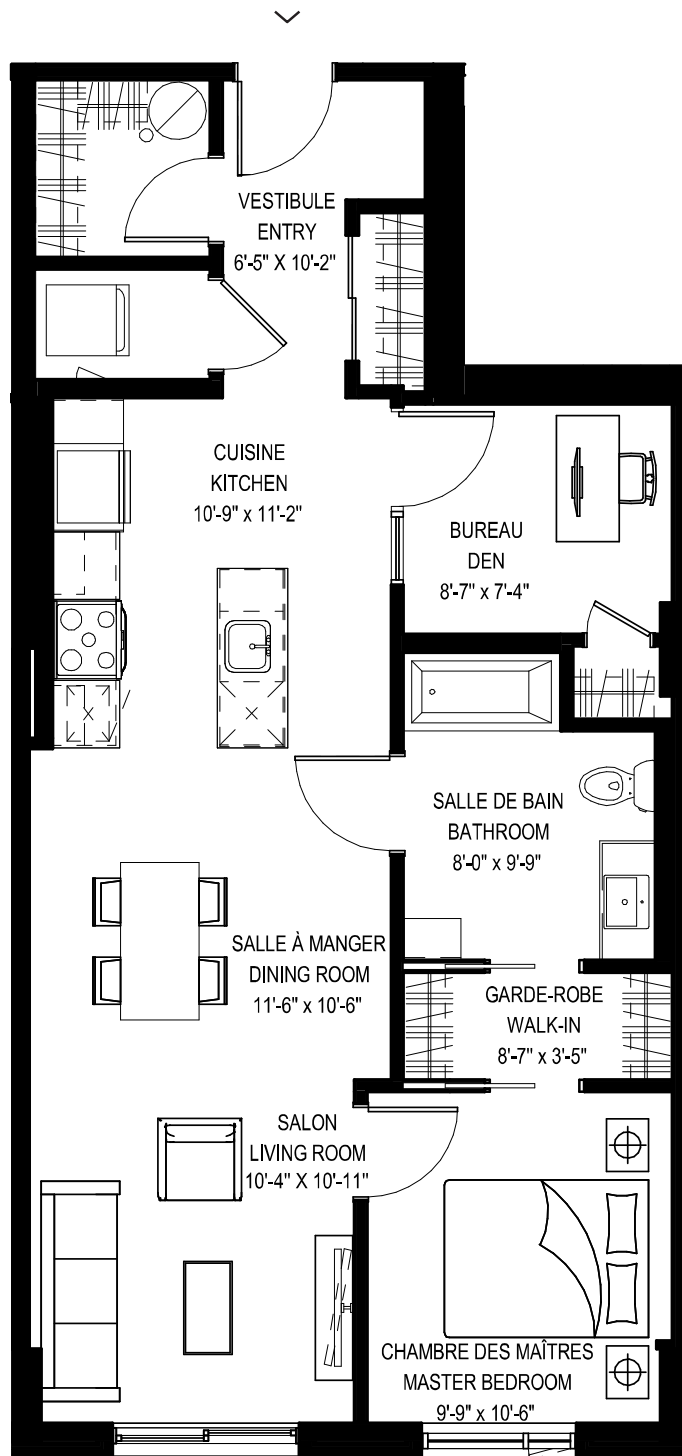
*La 3^e chambre est une chambre intérieure. *The 3rd bedroom is an interior room

UNITÉ • UNIT
206

Superficie • Area

1 229 pi² / sq. ft.





2^e étage
2nd floor

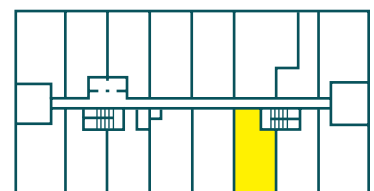
2 CHAMBRES* • 2 BEDROOMS*

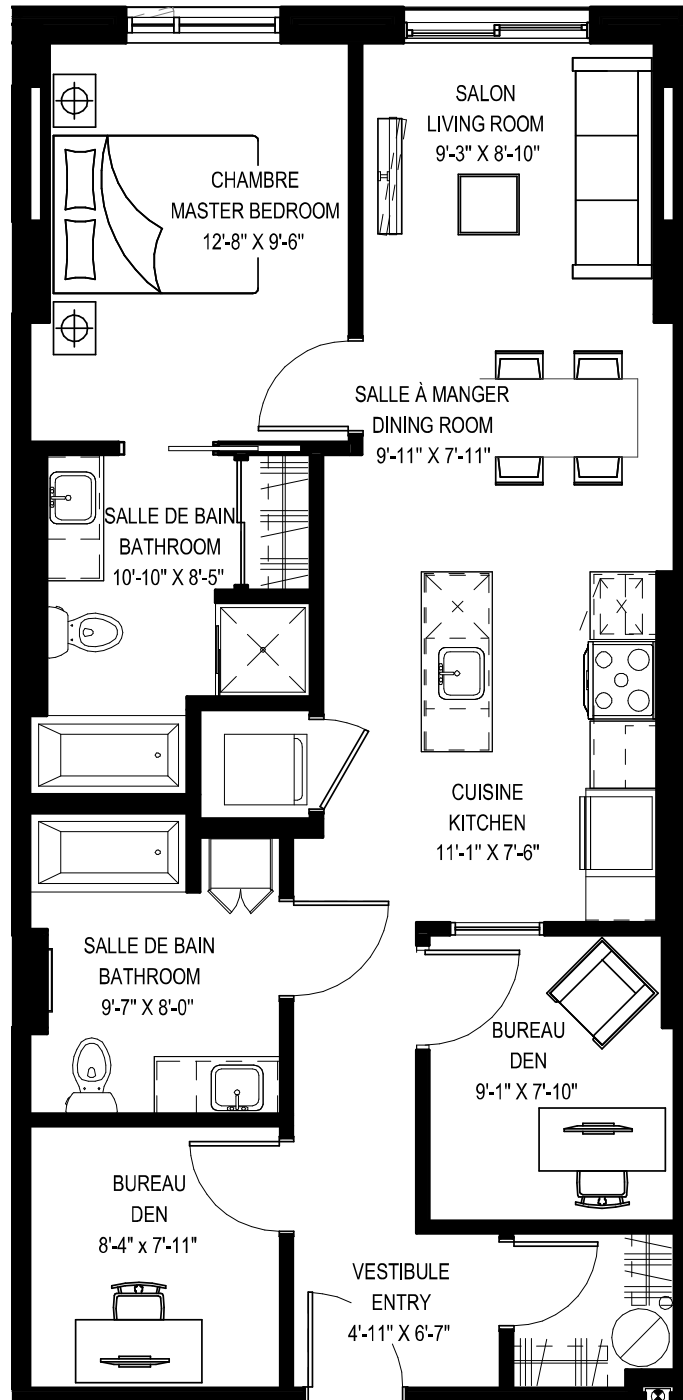
*La 2^e chambre est une chambre intérieure. *The 2nd bedroom is an interior room

UNITÉ • UNIT
207

Superficie • Area

865 pi² / sq. ft





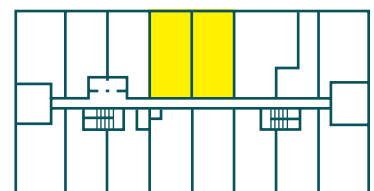
2^e au 3^e étage
2nd to 3rd floor

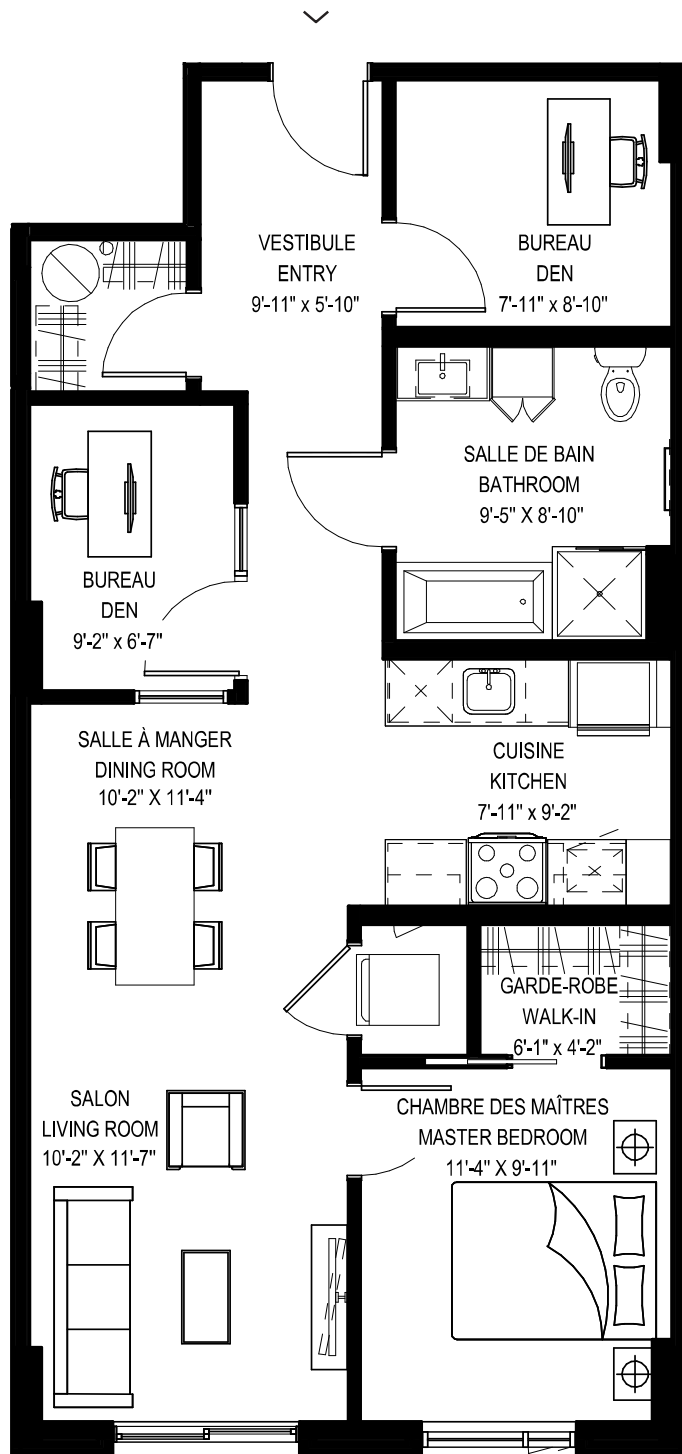
2 CHAMBRES* + BUREAU • 2 BEDROOMS* + DEN

*La 2^e chambre est une chambre intérieure. *The 2nd bedroom is an interior room

UNITÉS • UNITS Superficie • Area
208, 210, 308, 310

930 pi² / sq. ft.



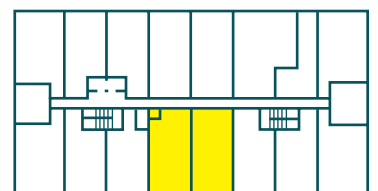


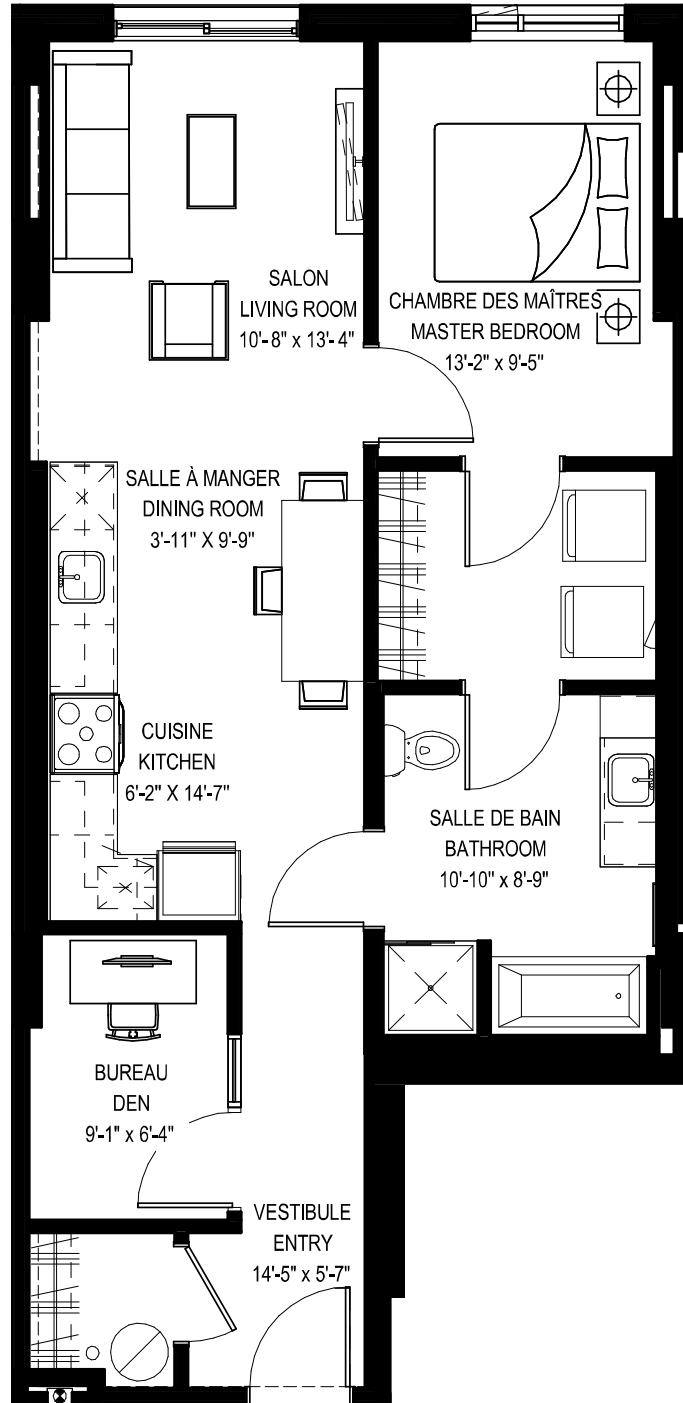
2^e étage
2nd floor

2 CHAMBRES* + BUREAU • 2 BEDROOMS* + DEN
 *La 2^e chambre est une chambre intérieure. *The 2nd bedroom is an interior room

UNITÉS • UNITS Superficie • Area
209, 211

901 pi² / sq. ft





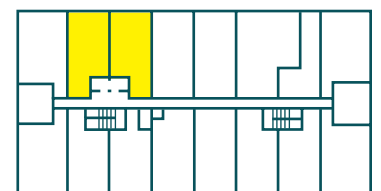
2^e au 3^e étage
2nd to 3rd floor

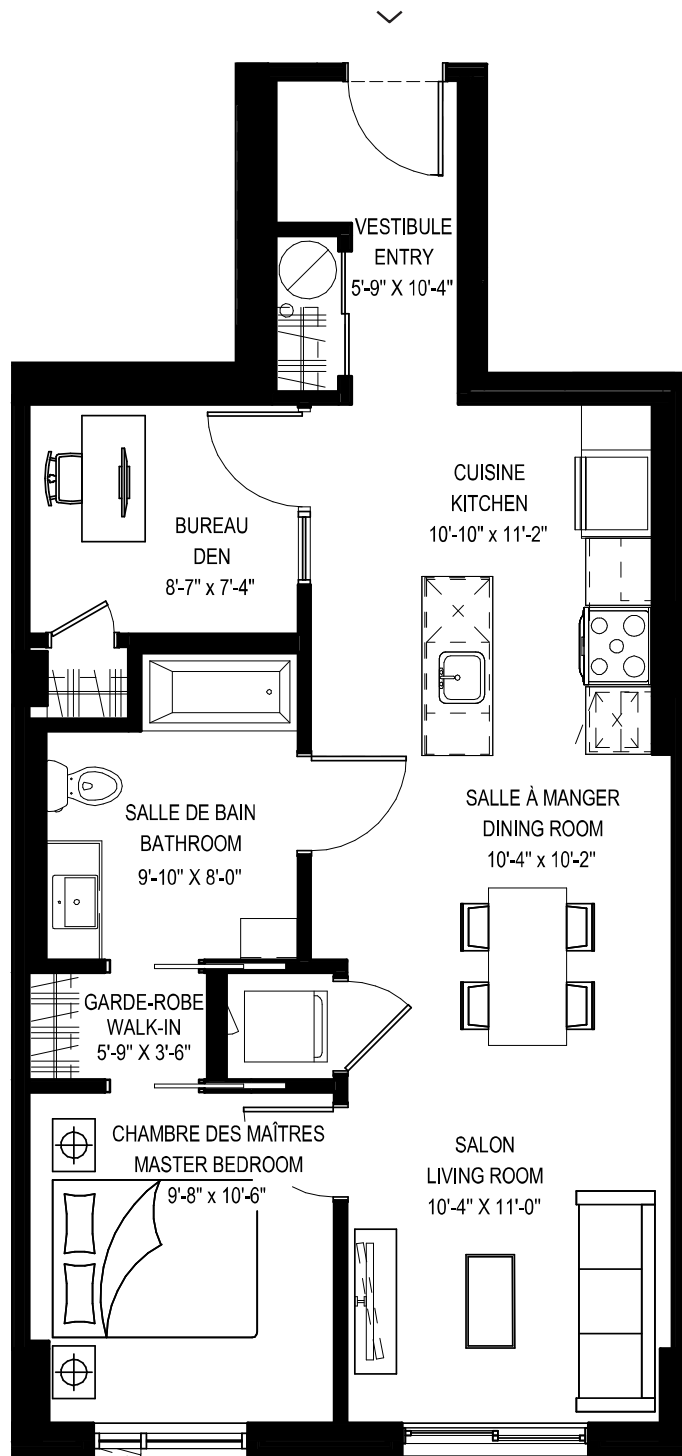
2 CHAMBRES* • 2 BEDROOMS*

*La 2^e chambre est une chambre intérieure. *The 2nd bedroom is an interior room

UNITÉS • UNITS Superficie • Area
212, 312, 314

843 pi² / sq. ft.





2^e étage
2nd floor

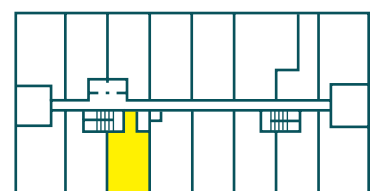
2 CHAMBRES* • 2 BEDROOMS*

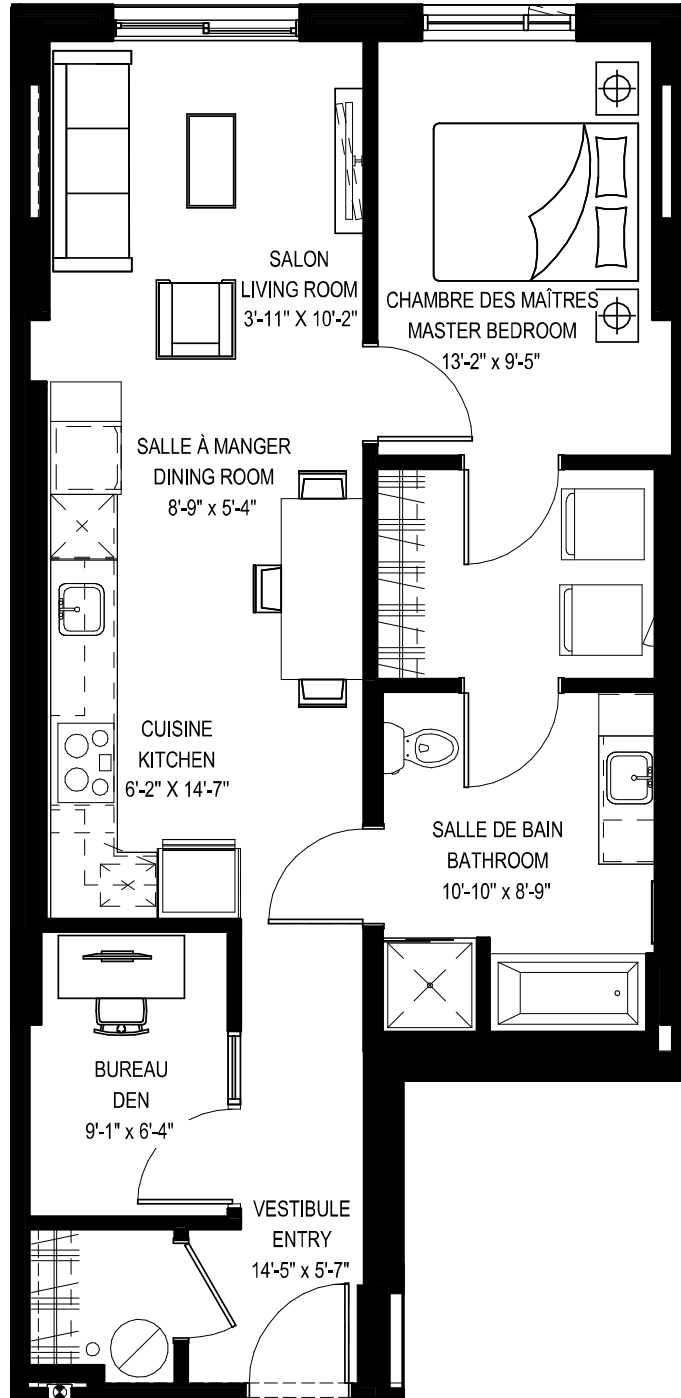
*La 2^e chambre est une chambre intérieure. *The 2nd bedroom is an interior room

UNITÉ • UNIT
213

Superficie • Area

804 pi² / sq. ft





2^e étage
2nd floor

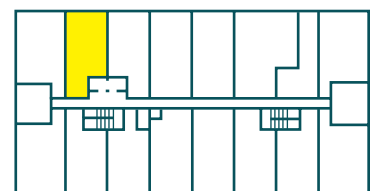
2 CHAMBRES* • 2 BEDROOMS*

*La 2^e chambre est une chambre intérieure. *The 2nd bedroom is an interior room

UNITÉ • UNIT
214

Superficie • Area

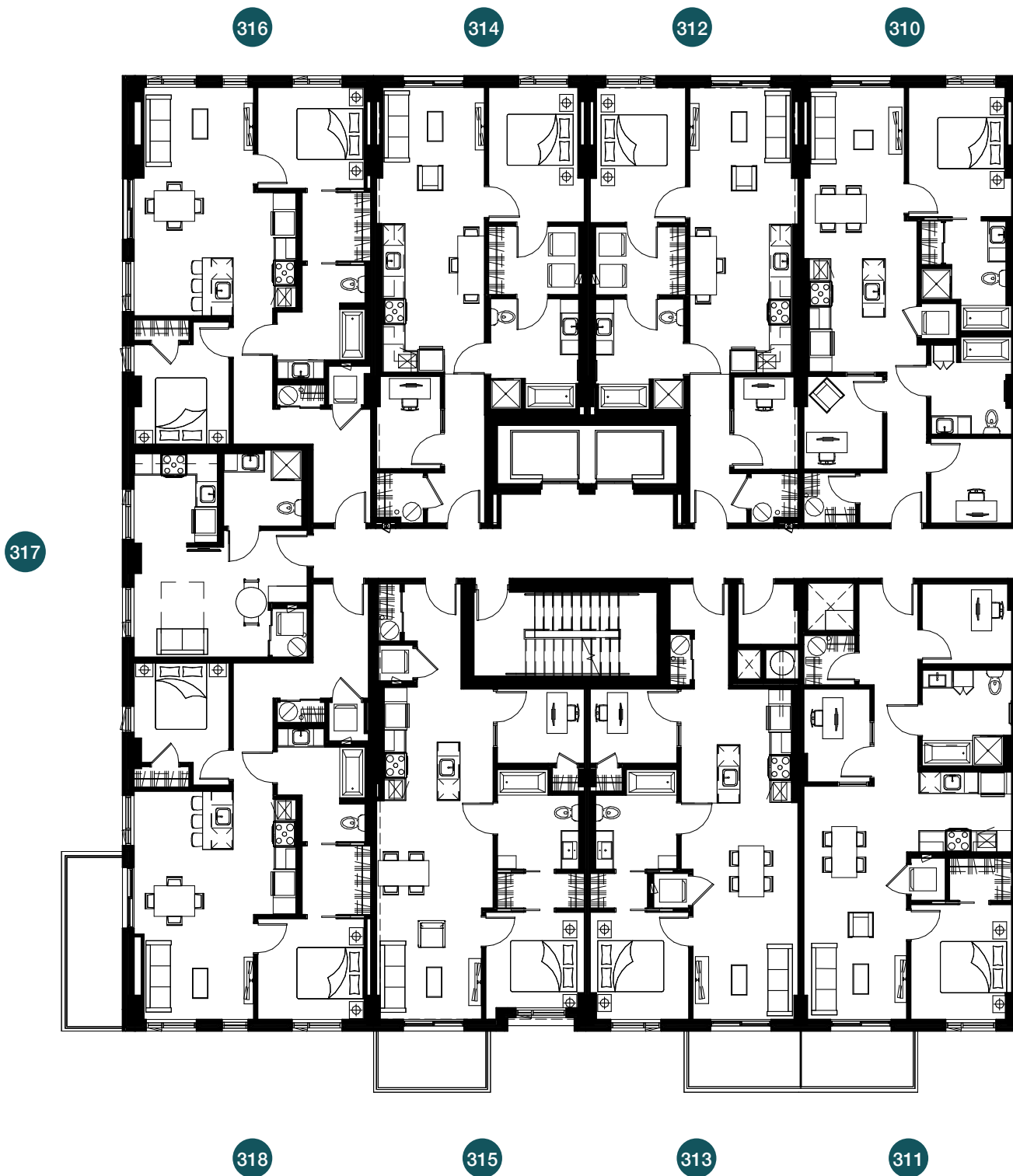
843 pi² / sq. ft.





3^e étage / 3rd floor

IMPASSE DU GRIFFON



Les spécifications et les plans de plancher peuvent changer sans préavis.
SEOO Specifications and floorplans subject to change without notice. E.&O.E.



308

306

304

302



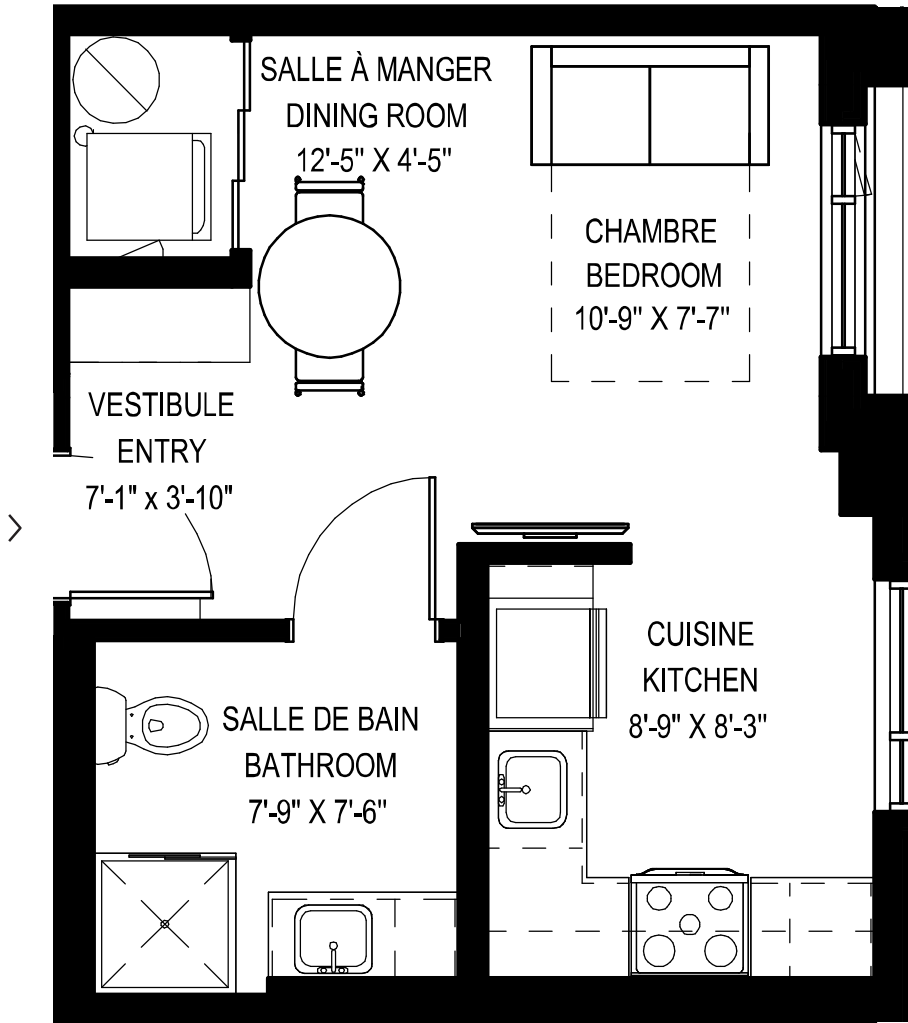
301

309

307

305

303



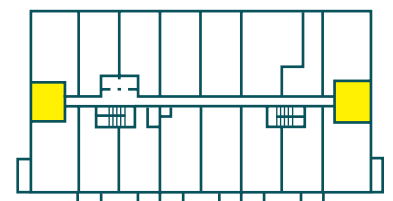
3^e au 10^e étage
3rd to 10th floor

STUDIO

UNITÉS • UNITS Superficie • Area

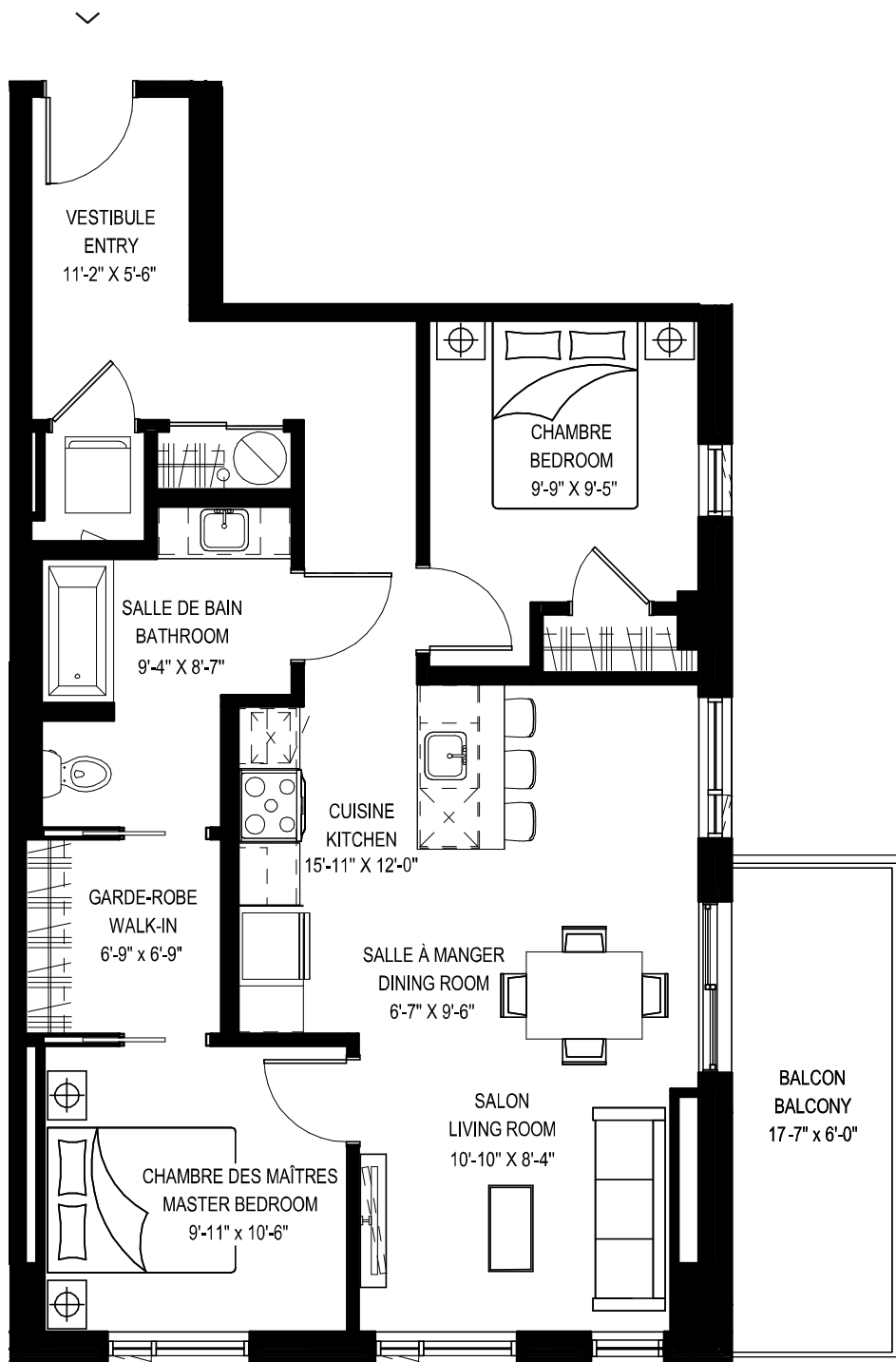
301 à/to 1001
417 à/to 1017

376 pi² / sq. ft.



Plan sujet à changement sans préavis. Les mesures sont approximatives.

Plan subject to change without notice. Measurements are approximate.



3^e au 10^e étage
3rd to 10th floor

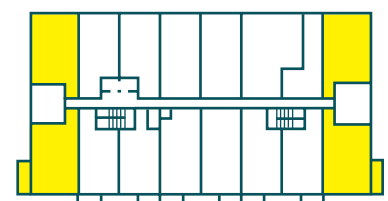
2 CHAMBRES • 2 BEDROOMS

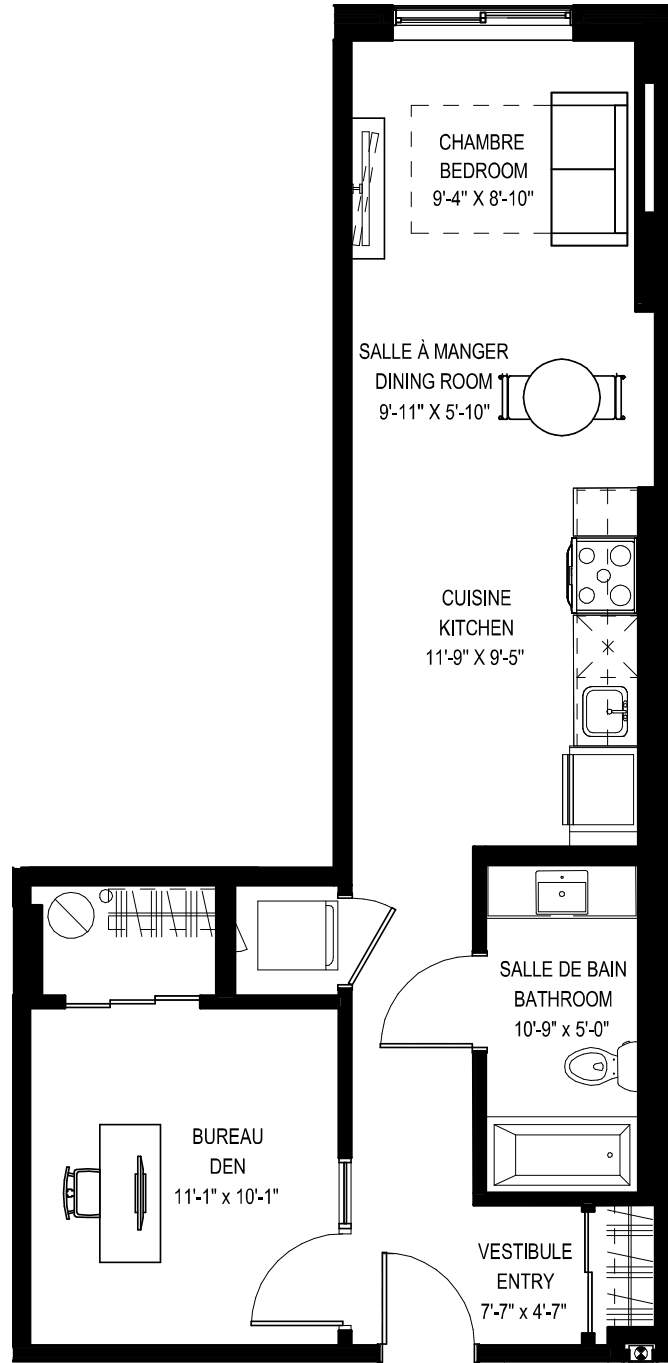
UNITÉS • UNITS

303 à/to 1003
318 à/to 1018
402 à/to 1002
416 à/to 1016

Superficie • Area
Terrasse • Terrace
Total

947 pi² / sq. ft.
105 pi² / sq. ft.
1 052 pi² / sq. ft.





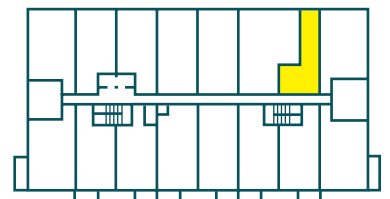
3^e étage
3rd floor

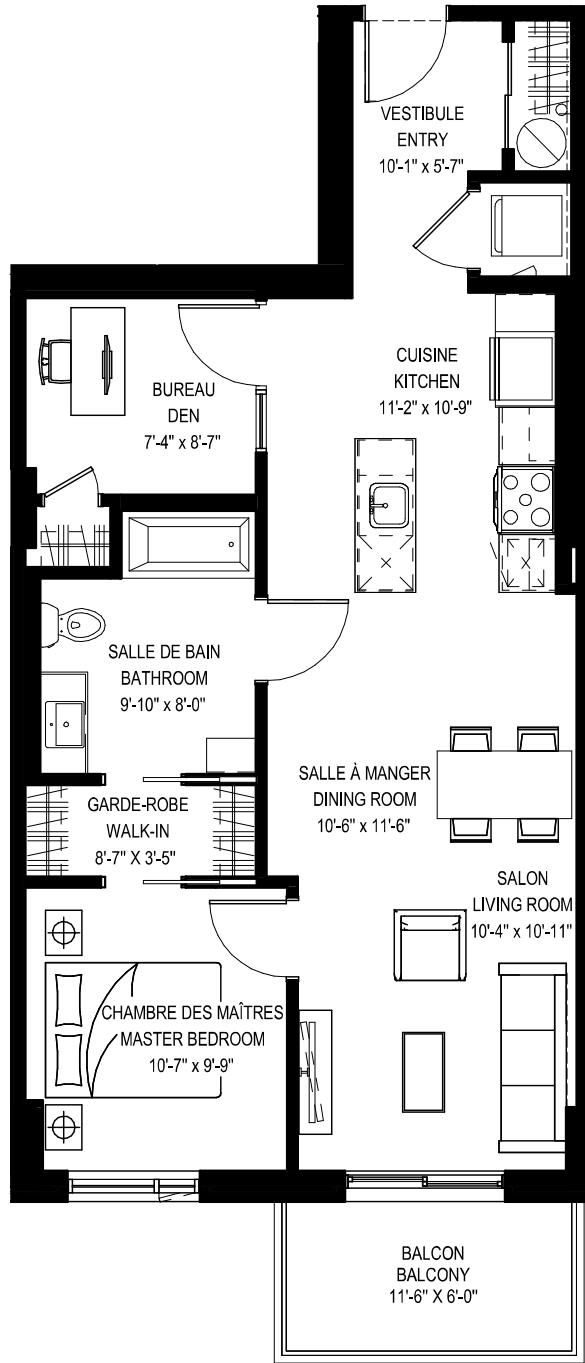
1 CHAMBRE INTÉRIEURE • 1 INTERIOR BEDROOM

UNITÉ • UNIT
304

Superficie • Area

632 pi² / sq. ft.





3^e au 10^e étage
3rd to 10th floor

2 CHAMBRES* • 2 BEDROOMS*

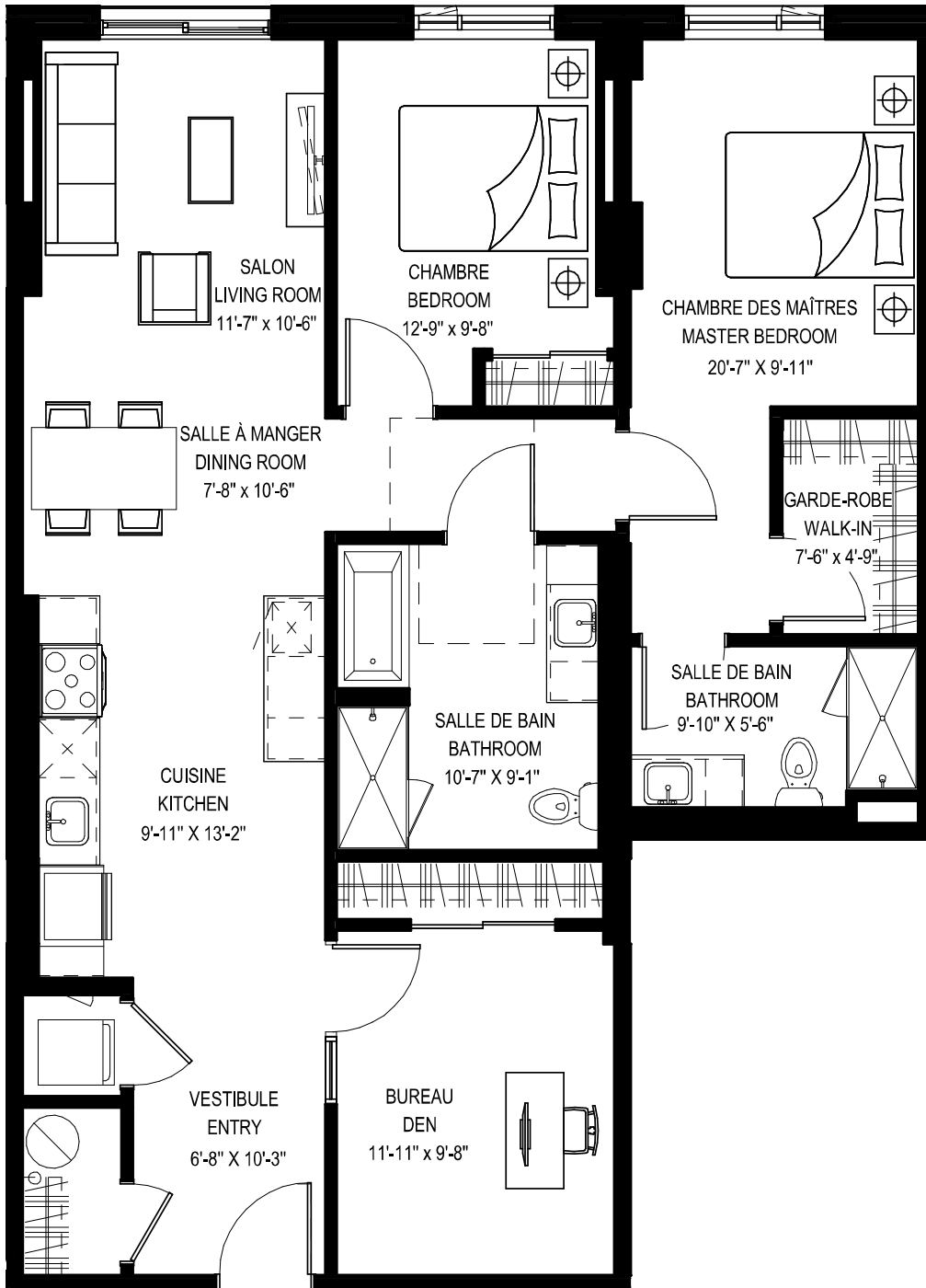
*La 2^e chambre est une chambre intérieure. *The 2nd bedroom is an interior room

UNITÉS • UNITS
305 à/to 1005

Superficie • Area
Terrasse • Terrace
Total

824 pi² / sq. ft.
69 pi² / sq. ft.
893 pi² / sq. ft.





3^e étage
3rd floor

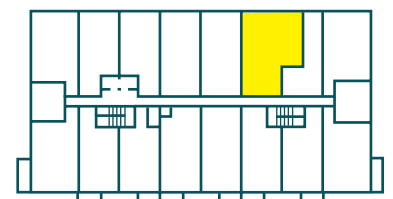
3 CHAMBRES* • 3 BEDROOMS*

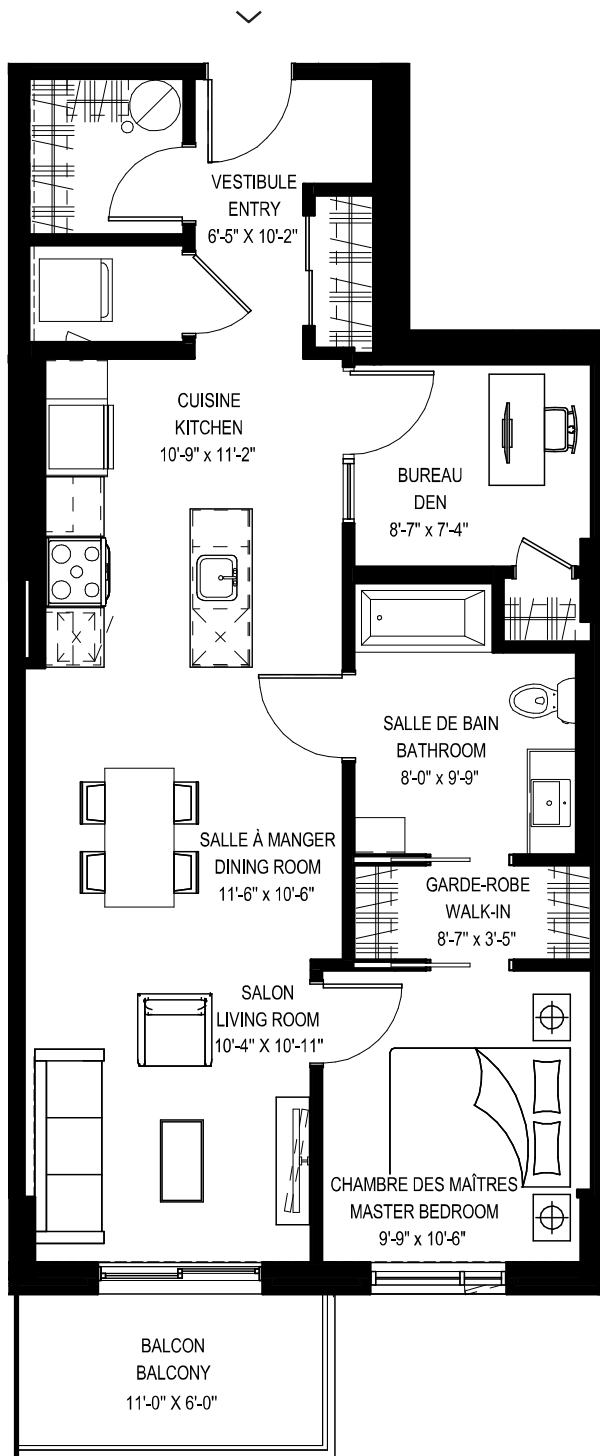
*La 3^e chambre est une chambre intérieure. *The 3rd bedroom is an interior room

UNITÉ • UNIT
306

Superficie • Area

1 229 pi² / sq. ft.





3^e au 10^e étage
3rd to 10th floor

2 CHAMBRES* • 2 BEDROOMS*

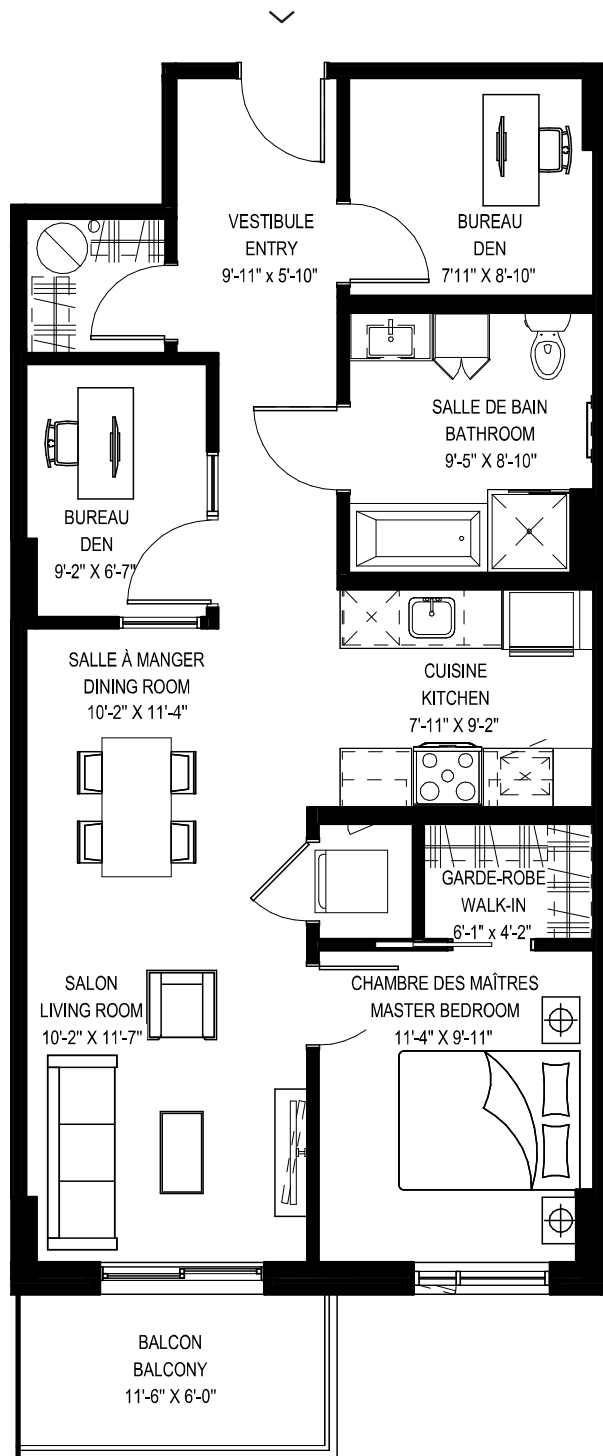
*La 2^e chambre est une chambre intérieure. *The 2nd bedroom is an interior room

UNITÉS • UNITS
307 à/to 1007

Superficie • Area
Terrasse • Terrace
Total

865 pi² / sq. ft.
69 pi² / sq. ft.
933 pi² / sq. ft.





3^e au 10^e étage
3rd to 10th floor

2 CHAMBRES* + BUREAU • 2 BEDROOMS* + DEN

*La 2^e chambre est une chambre intérieure. *The 2nd bedroom is an interior room

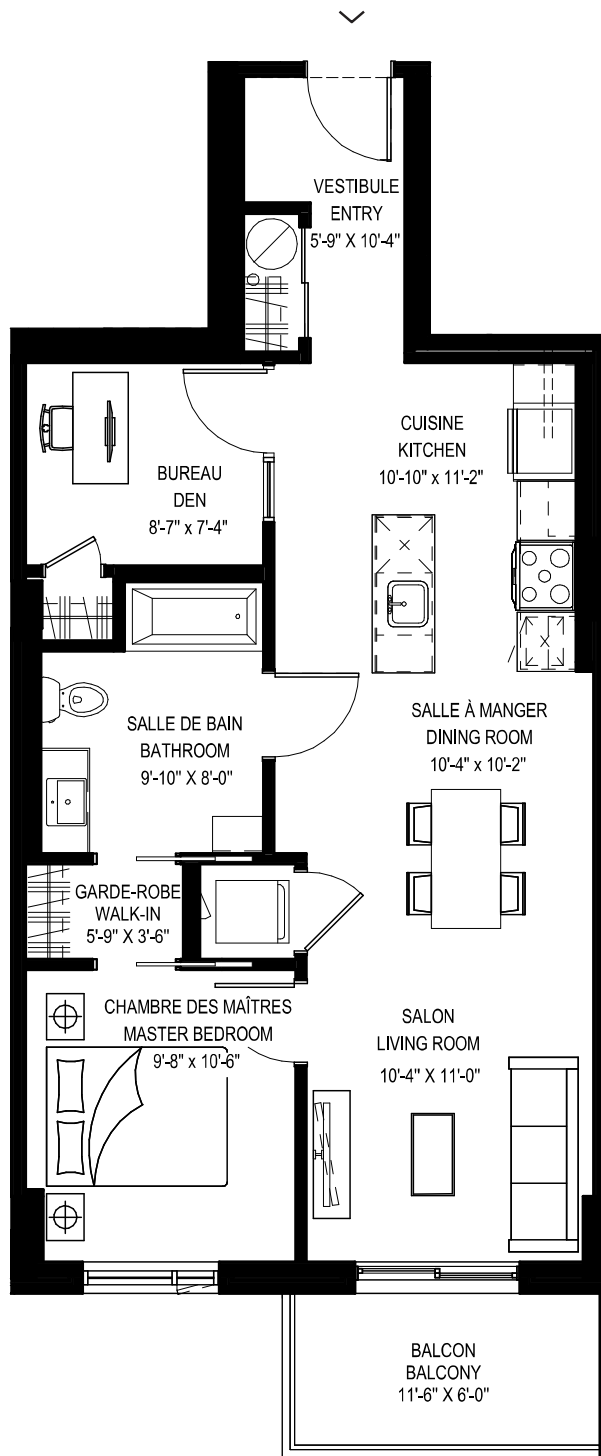
UNITÉS • UNITS

309 à/to 1009
311 à/to 1011

Superficie • Area
Terrasse • Terrace
Total

901 pi² / sq. ft.
69 pi² / sq. ft.
970 pi² / sq. ft.





3^e au 10^e étage
3rd to 10th floor

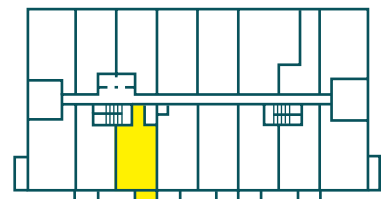
2 CHAMBRES* • 2 BEDROOMS*

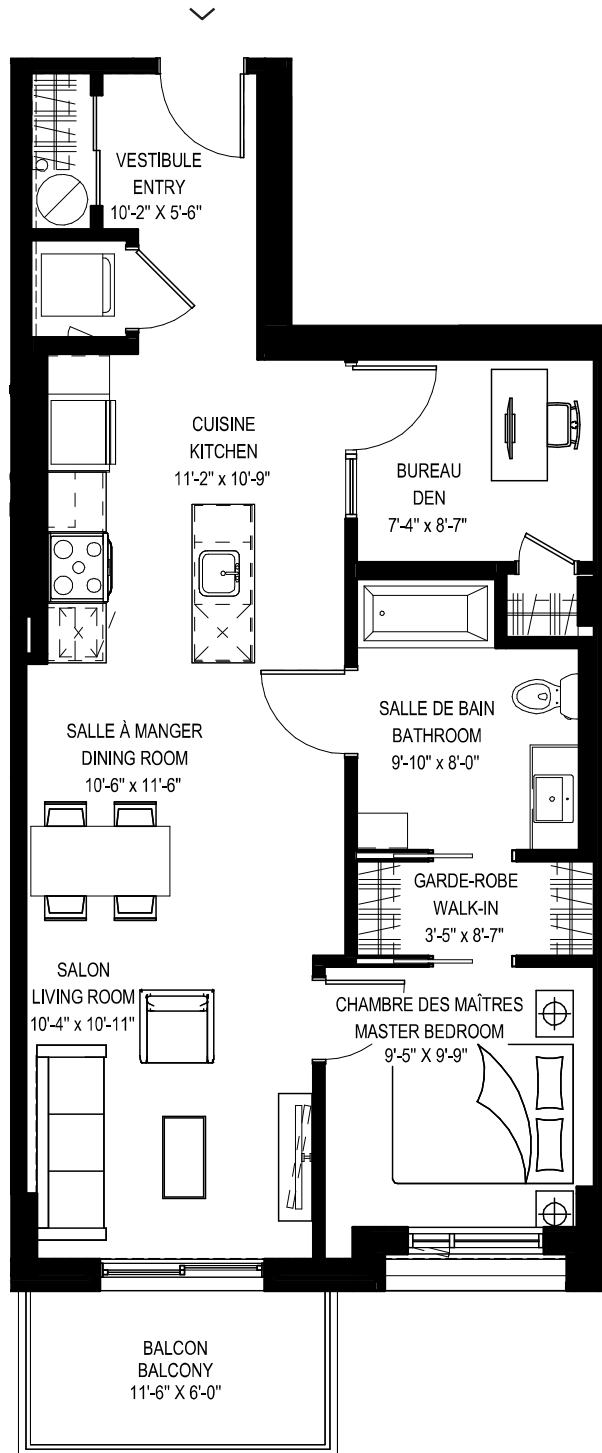
*La 2^e chambre est une chambre intérieure. *The 2nd bedroom is an interior room

UNITÉS • UNITS
313 à/to 1013

Superficie • Area
Terrasse • Terrace
Total

804 pi² / sq. ft.
69 pi² / sq. ft.
873 pi² / sq. ft.





3^e au 10^e étage
3rd to 10th floor

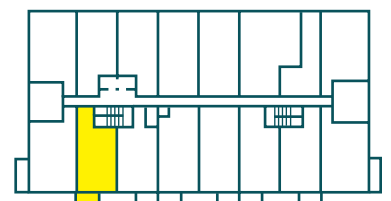
2 CHAMBRES* • 2 BEDROOMS*

*La 2^e chambre est une chambre intérieure. *The 2nd bedroom is an interior room

UNITÉS • UNITS
315 à/to 1015

Superficie • Area
Terrasse • Terrace
Total

815 pi² / sq. ft.
69 pi² / sq. ft.
884 pi² / sq. ft.





4^e au 10^e étage / 4th to 10th floor

IMPASSE DU GRIFFON



Les spécifications et les plans de plancher peuvent changer sans préavis.
SEO0 Specifications and floorplans subject to change without notice. E.&O.E.



X08

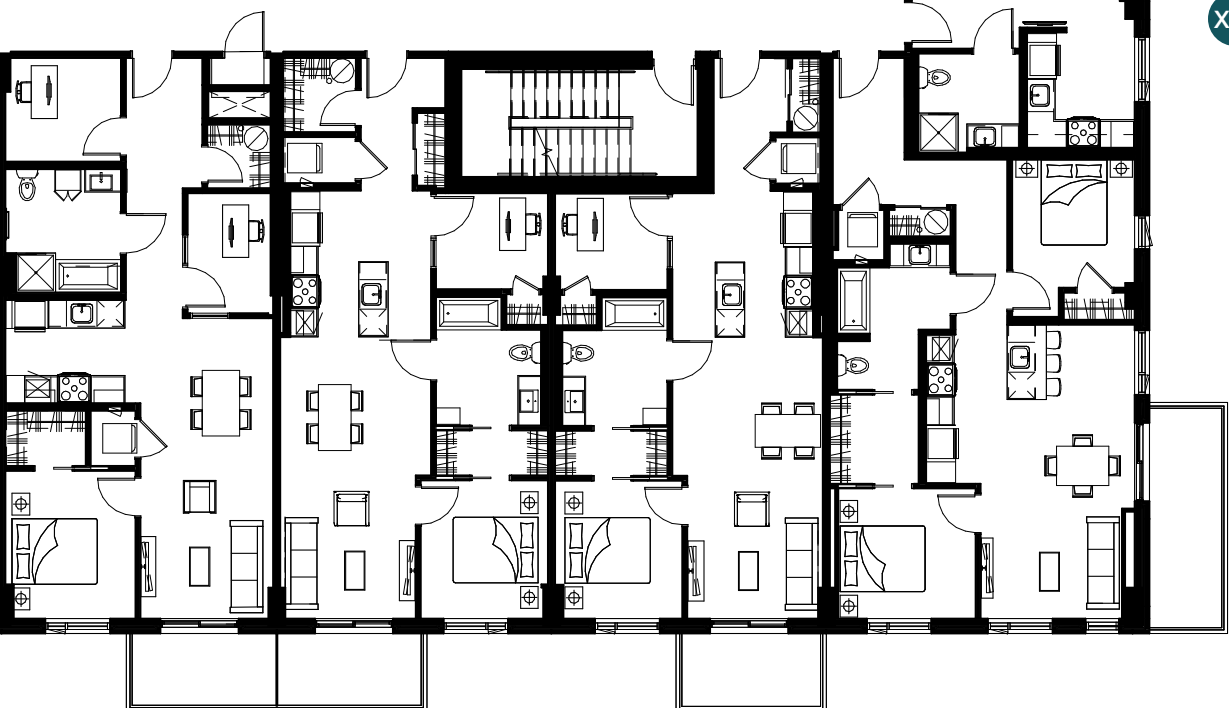
X06

X04

X02



X01

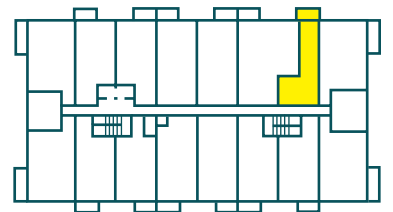
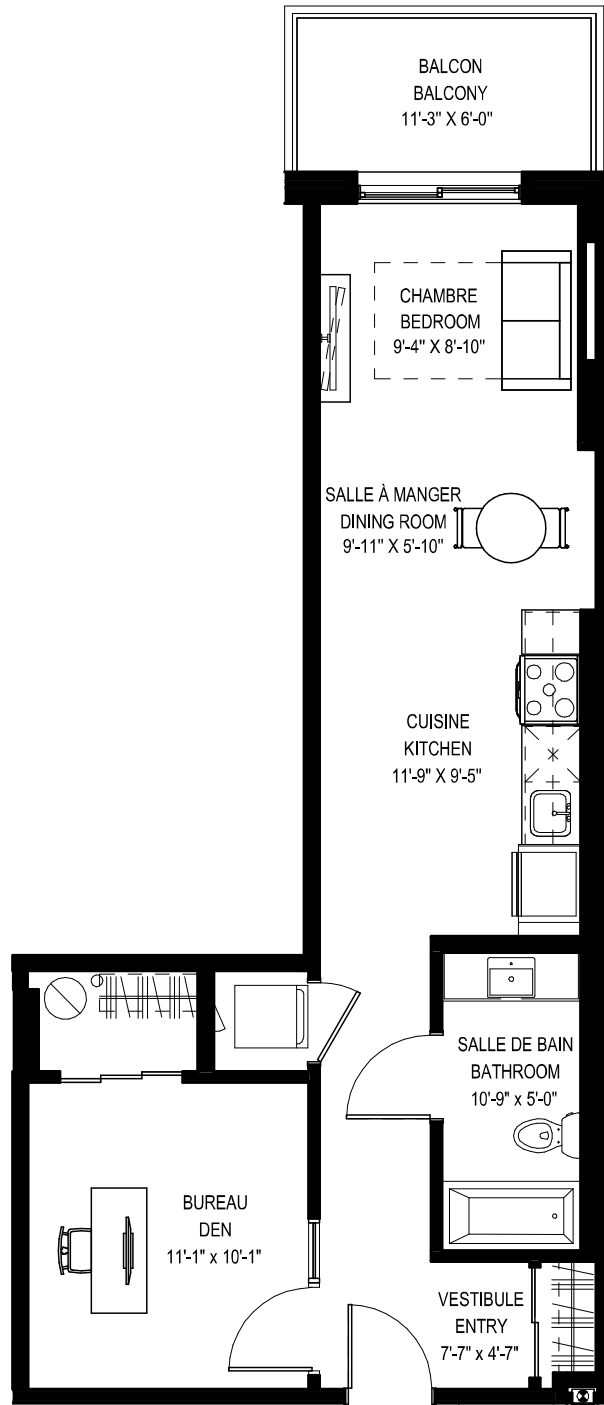


X09

X07

X05

X03



4^e au 10^e étage
4th to 10th floor

1 CHAMBRE INTÉRIEURE • 1 INTERIOR BEDROOM

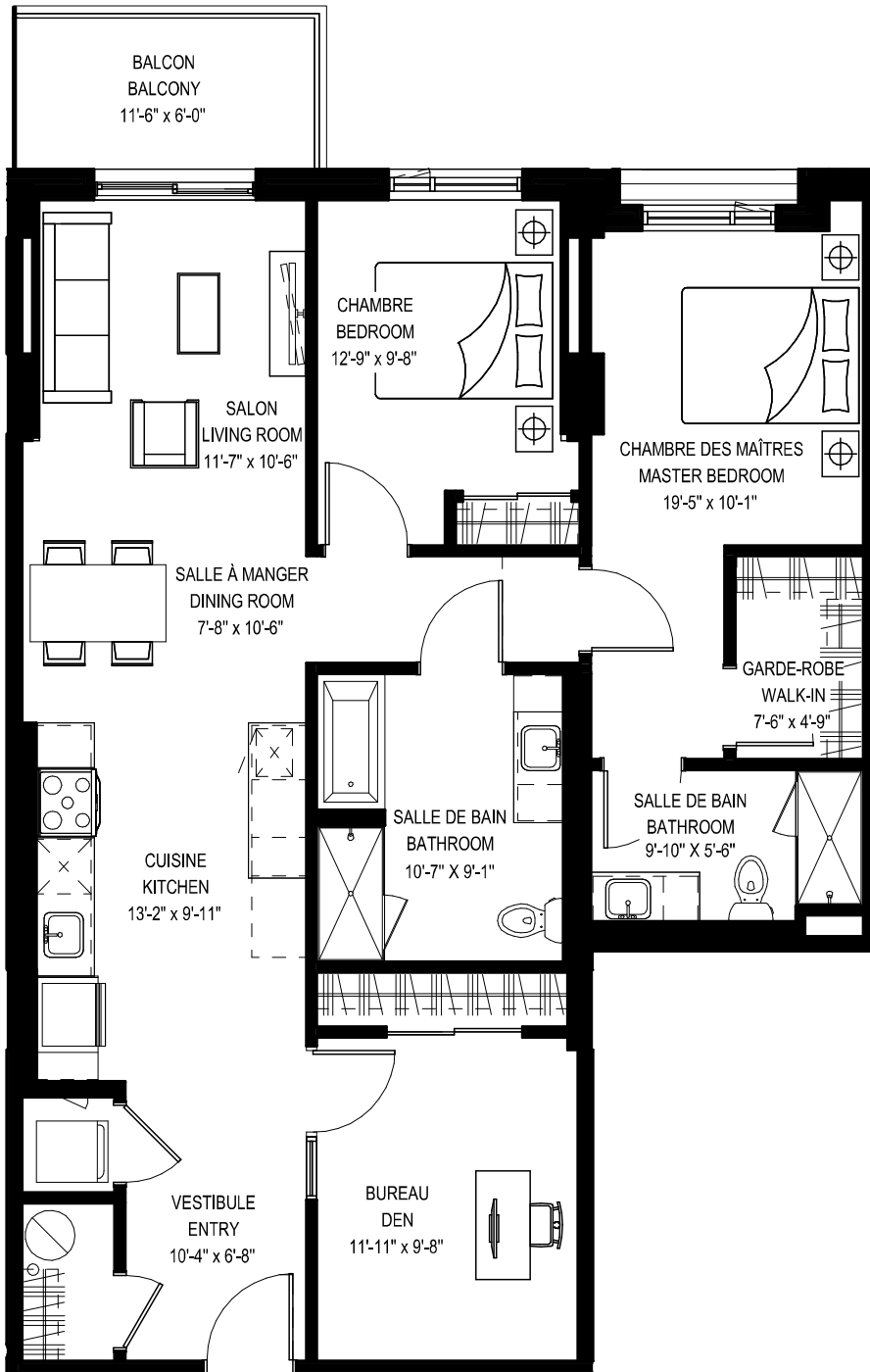
UNITÉS • UNITS
404 à/to 1004

Superficie • Area
Terrasse • Terrace
Total

632 pi² / sq. ft.
69 pi² / sq. ft.
701 pi² / sq. ft.

Plan sujet à changement sans préavis. Les mesures sont approximatives.

Plan subject to change without notice. Measurements are approximate.



4^e au 10^e étage
4th to 10th floor

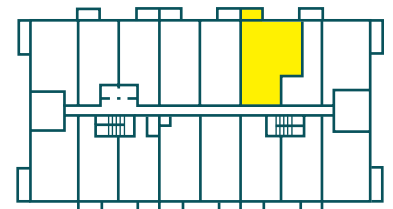
3 CHAMBRES* • 3 BEDROOMS*

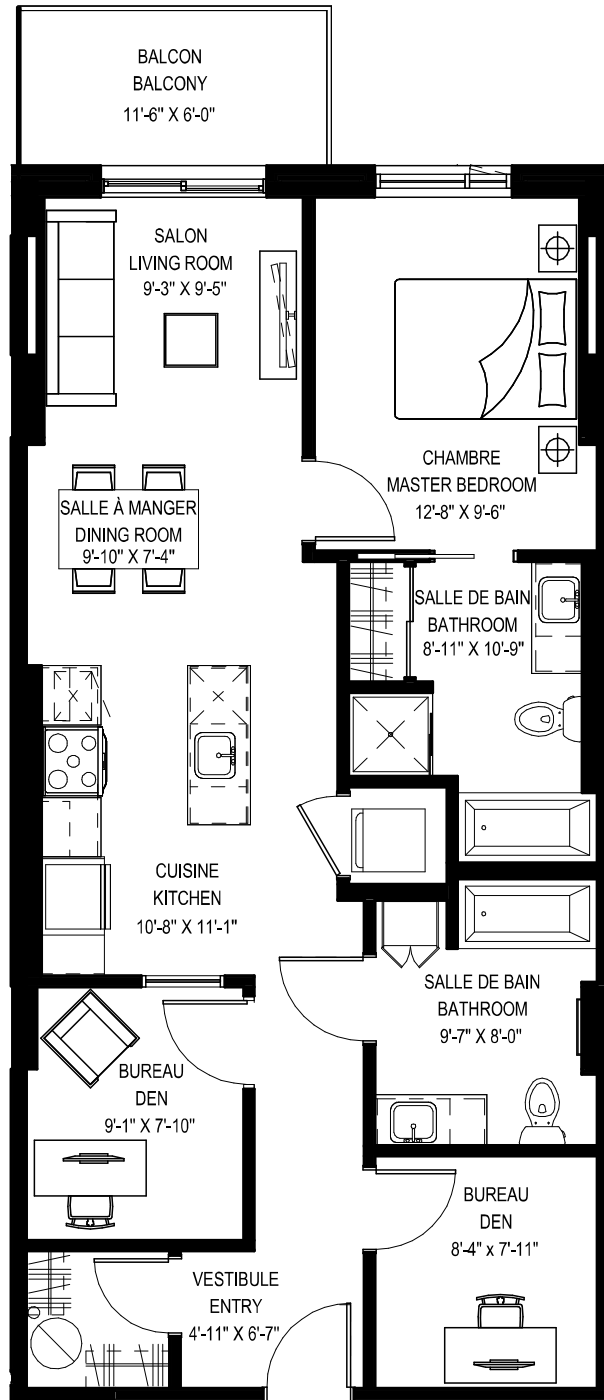
*La 3^e chambre est une chambre intérieure. *The 3rd bedroom is an interior room

UNITÉS • UNITS
406 à/to 1006

Superficie • Area
Terrasse • Terrace
Total

1 221 pi² / sq. ft.
69 pi² / sq. ft.
1 290 pi² / sq. ft.





4^e au 10^e étage
4th to 10th floor

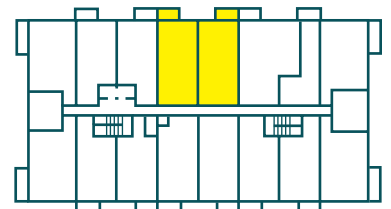
2 CHAMBRES* + BUREAU • 2 BEDROOMS* + DEN

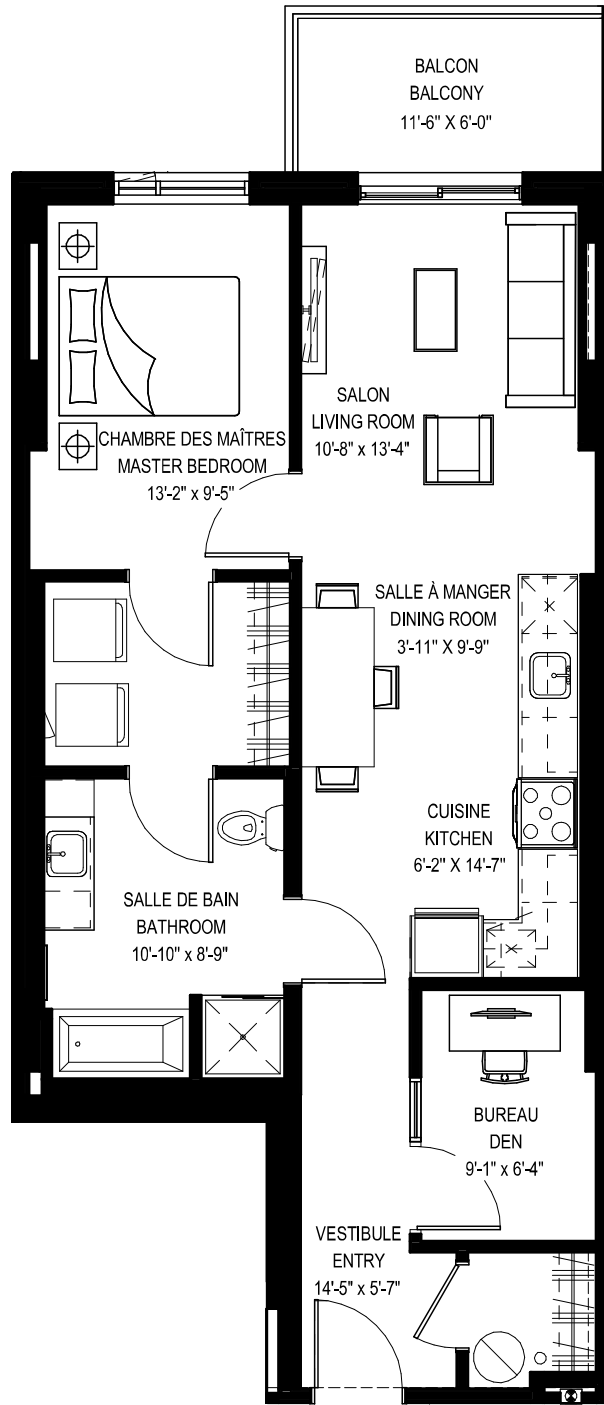
*La 2^e chambre est une chambre intérieure. *The 2nd bedroom is an interior room

UNITÉS • UNITS
408 à/to 1008
410 à/to 1010

Superficie • Area
Terrasse • Terrace
Total

930 pi² / sq. ft.
69 pi² / sq. ft.
999 pi² / sq. ft.





4^e au 10^e étage
4th to 10th floor

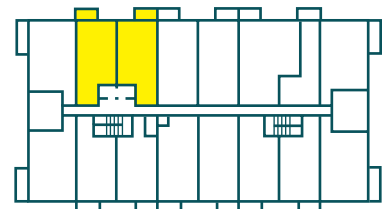
2 CHAMBRES* • 2 BEDROOMS*

*La 2^e chambre est une chambre intérieure. *The 2nd bedroom is an interior room

UNITÉS • UNITS
412 à/to 1012
414 à/to 1014

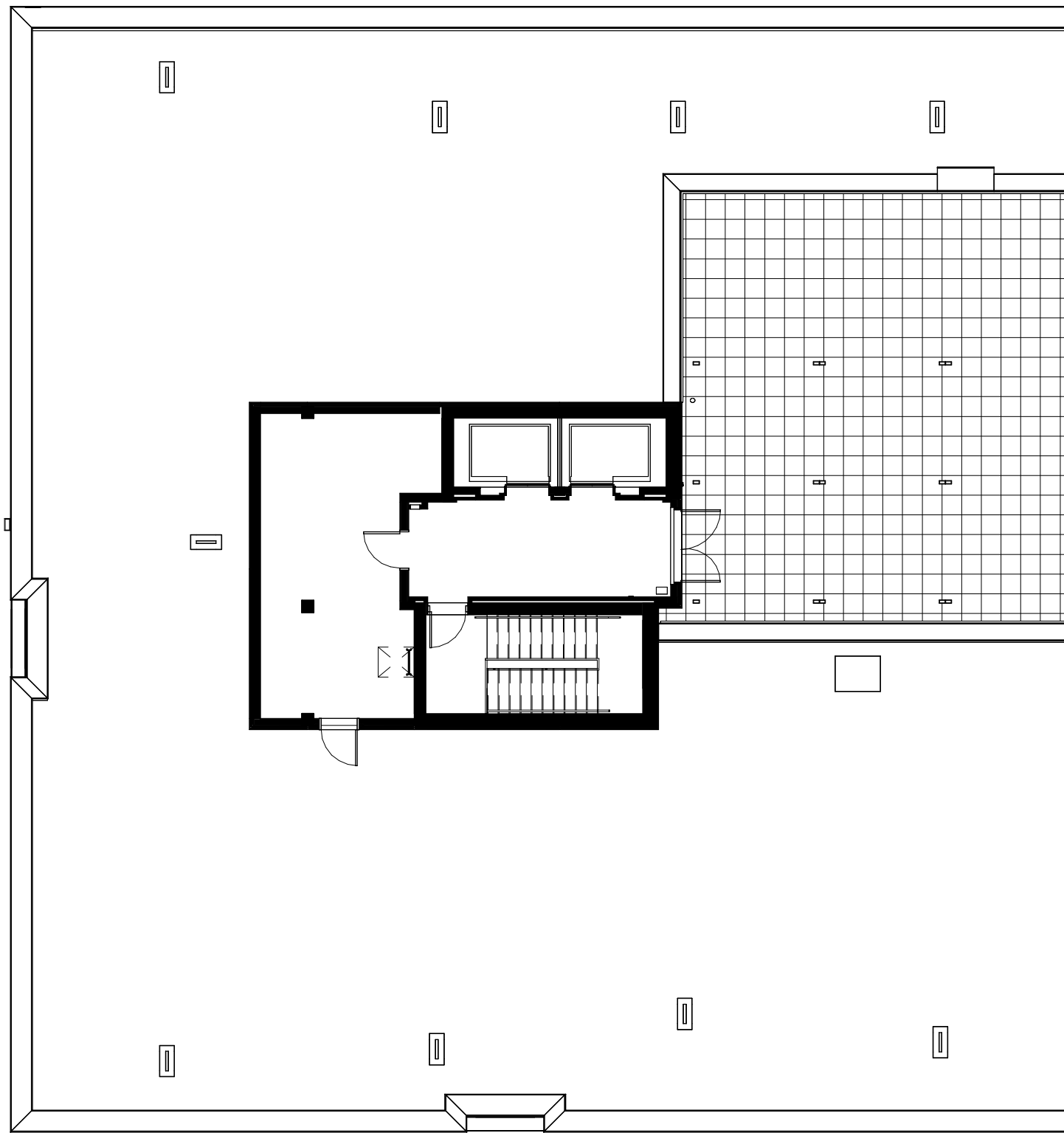
Superficie • Area
Terrasse • Terrace
Total

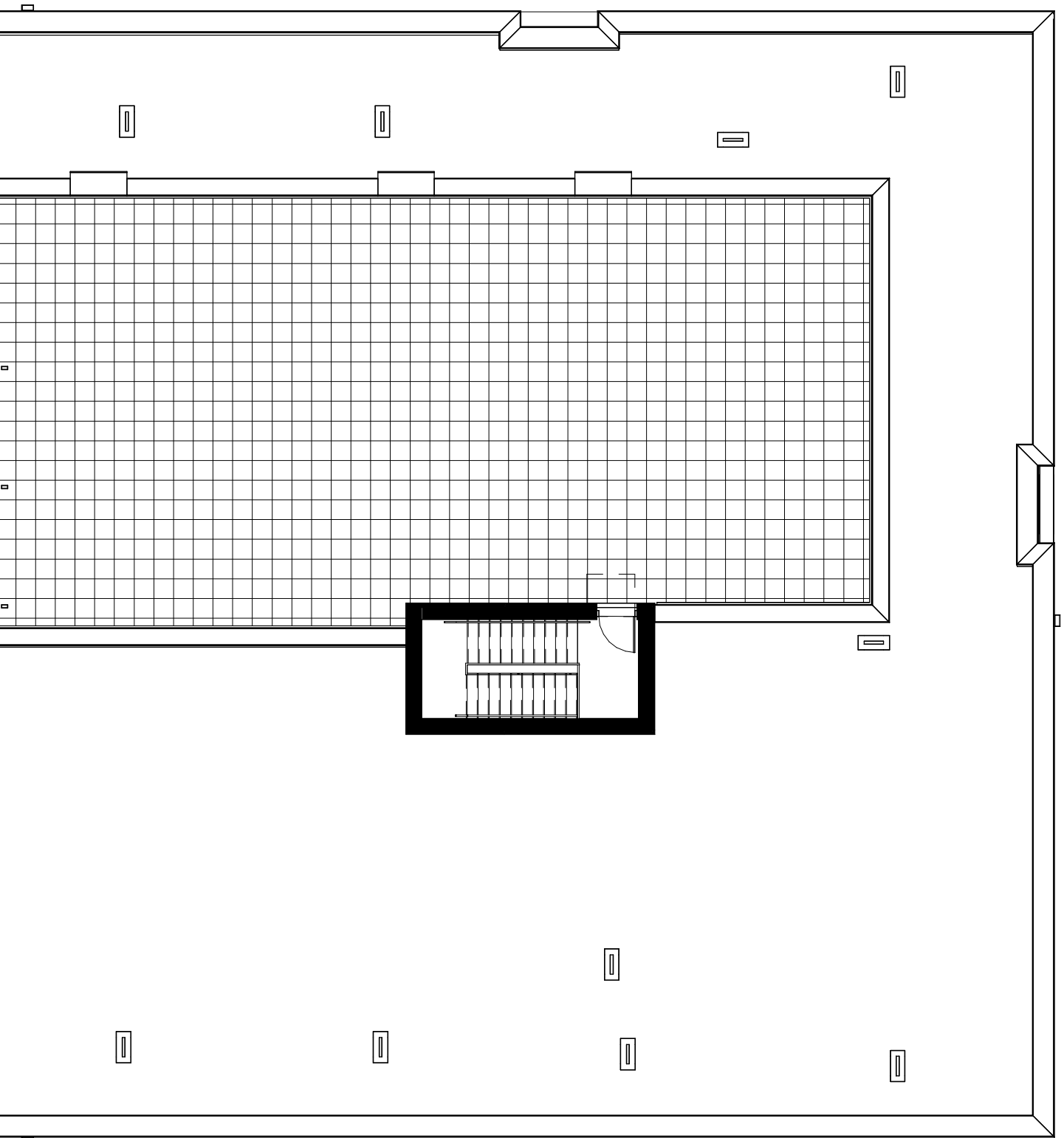
843 pi² / sq. ft.
69 pi² / sq. ft.
912 pi² / sq. ft.



Terrasse sur le toit

Rooftop terrace









Champlain⁺

VILLAGE URBAIN • URBAN VILLAGE

819 800-3949
brigil.com

brigil