

Champlain[🌲]

VILLAGE URBAIN • URBAN VILLAGE

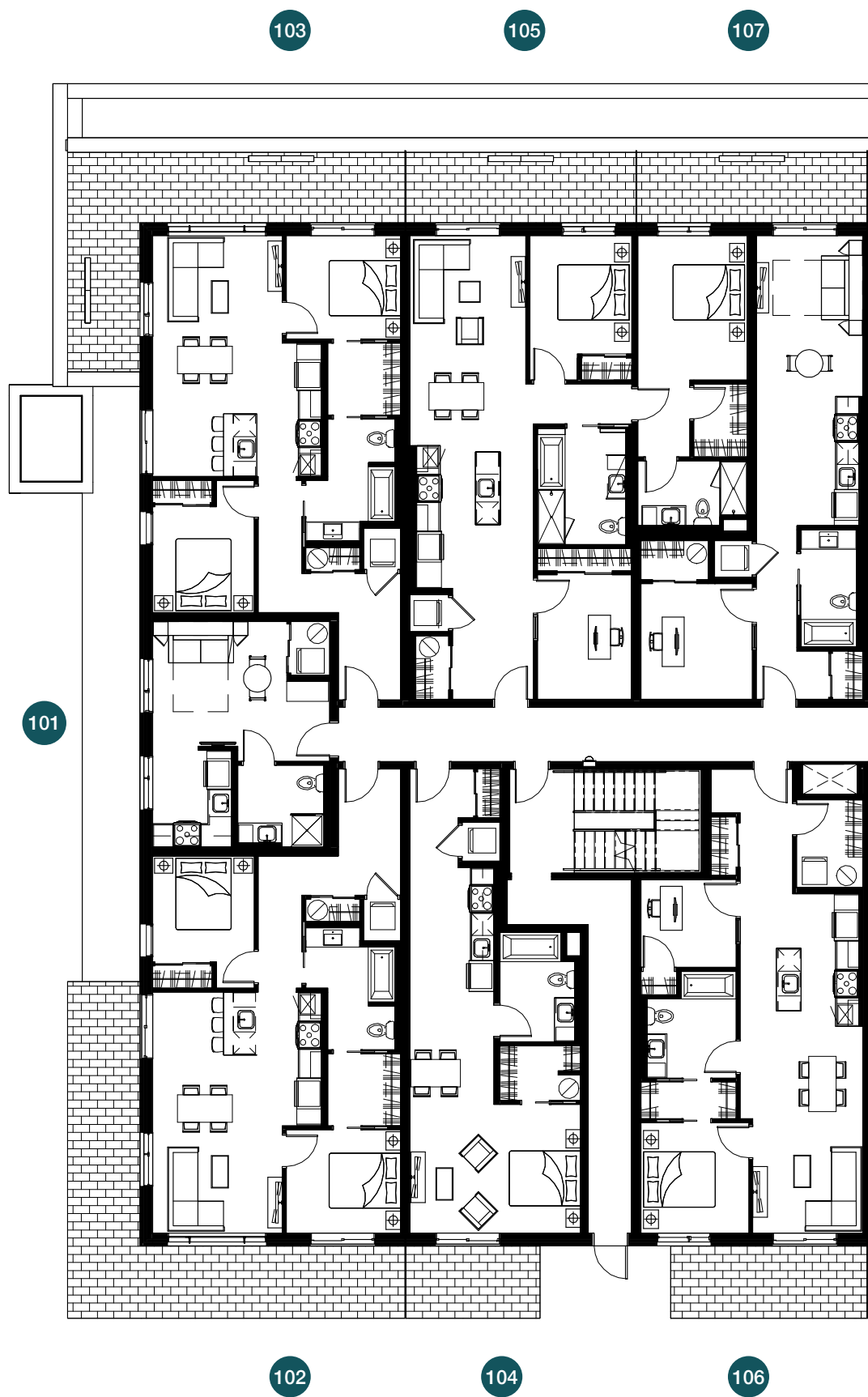


brigil





Rez-de-chaussée / Ground floor



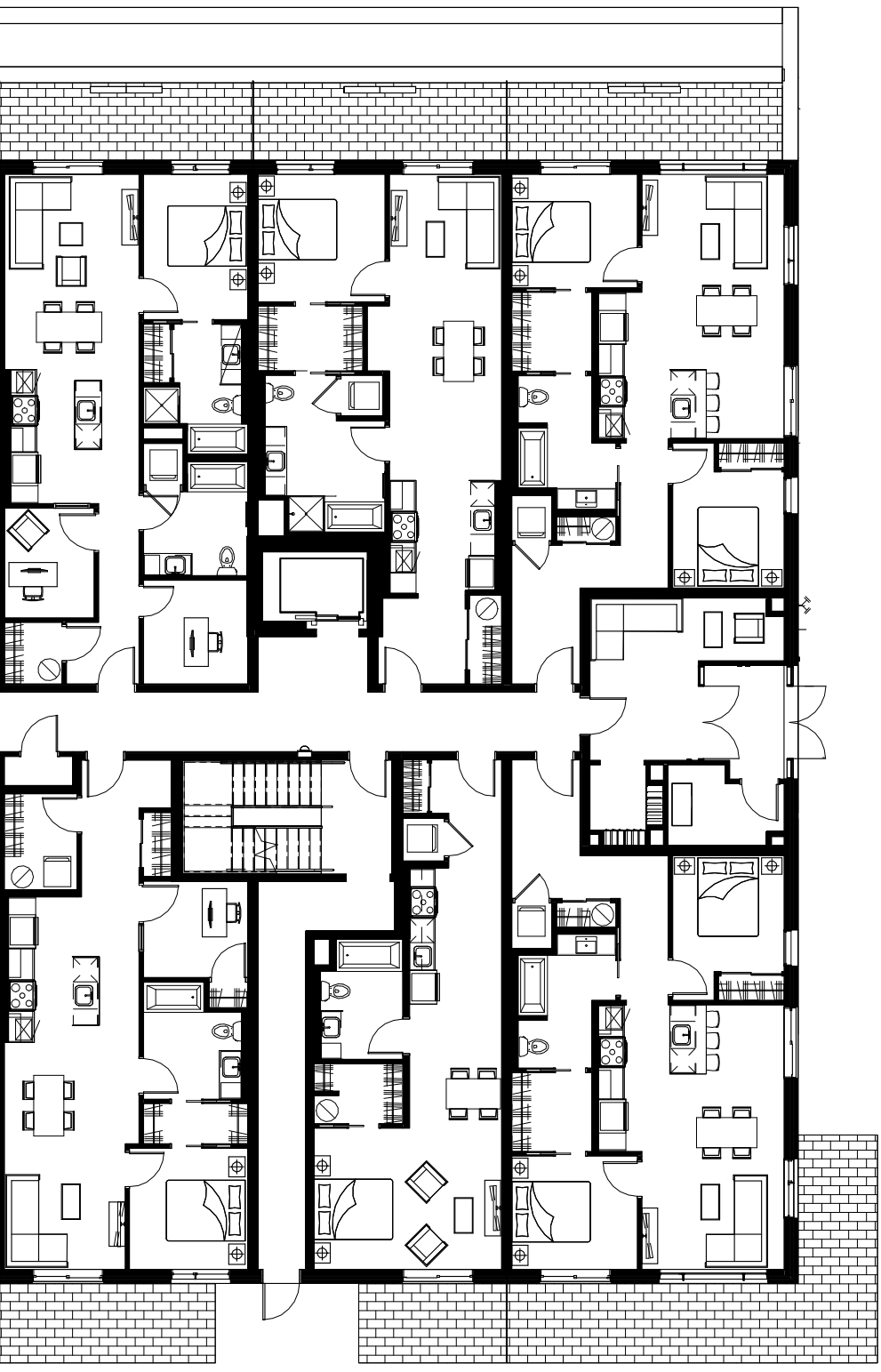
Les spécifications et les plans de plancher peuvent changer sans préavis.
SEO Specifications and floorplans subject to change without notice. E.&O.E.



109

111

113

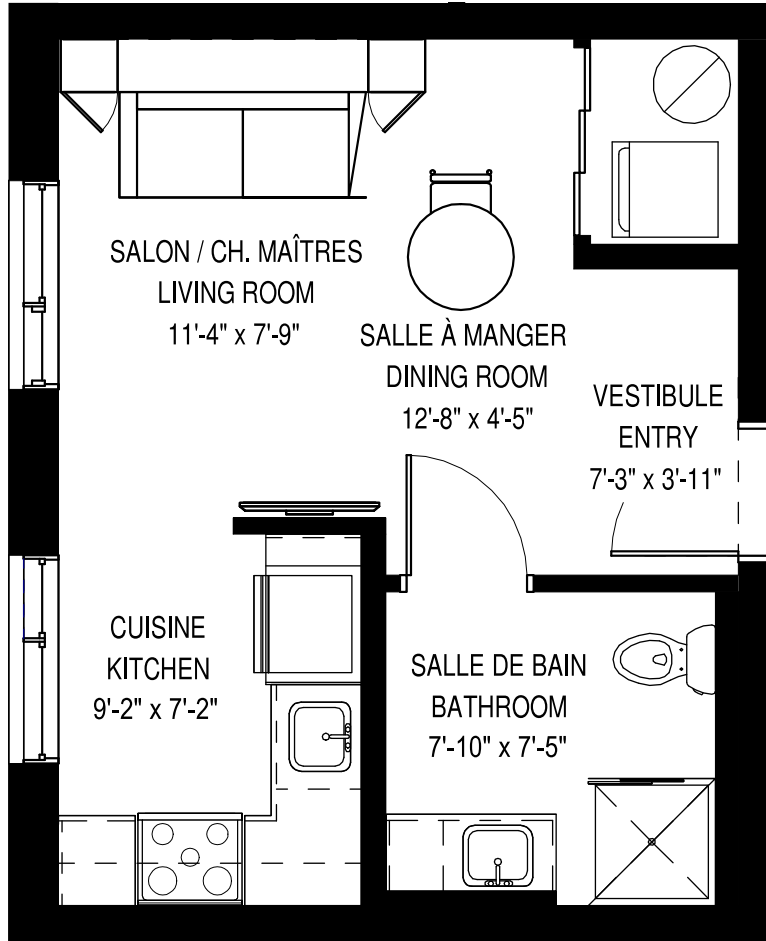


108

110

112

IMPASSE DU GRIFFON



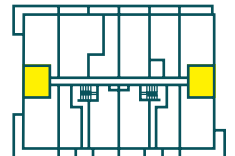
Rez-de-chaussée au 4^e étage
Ground floor to 4th floor

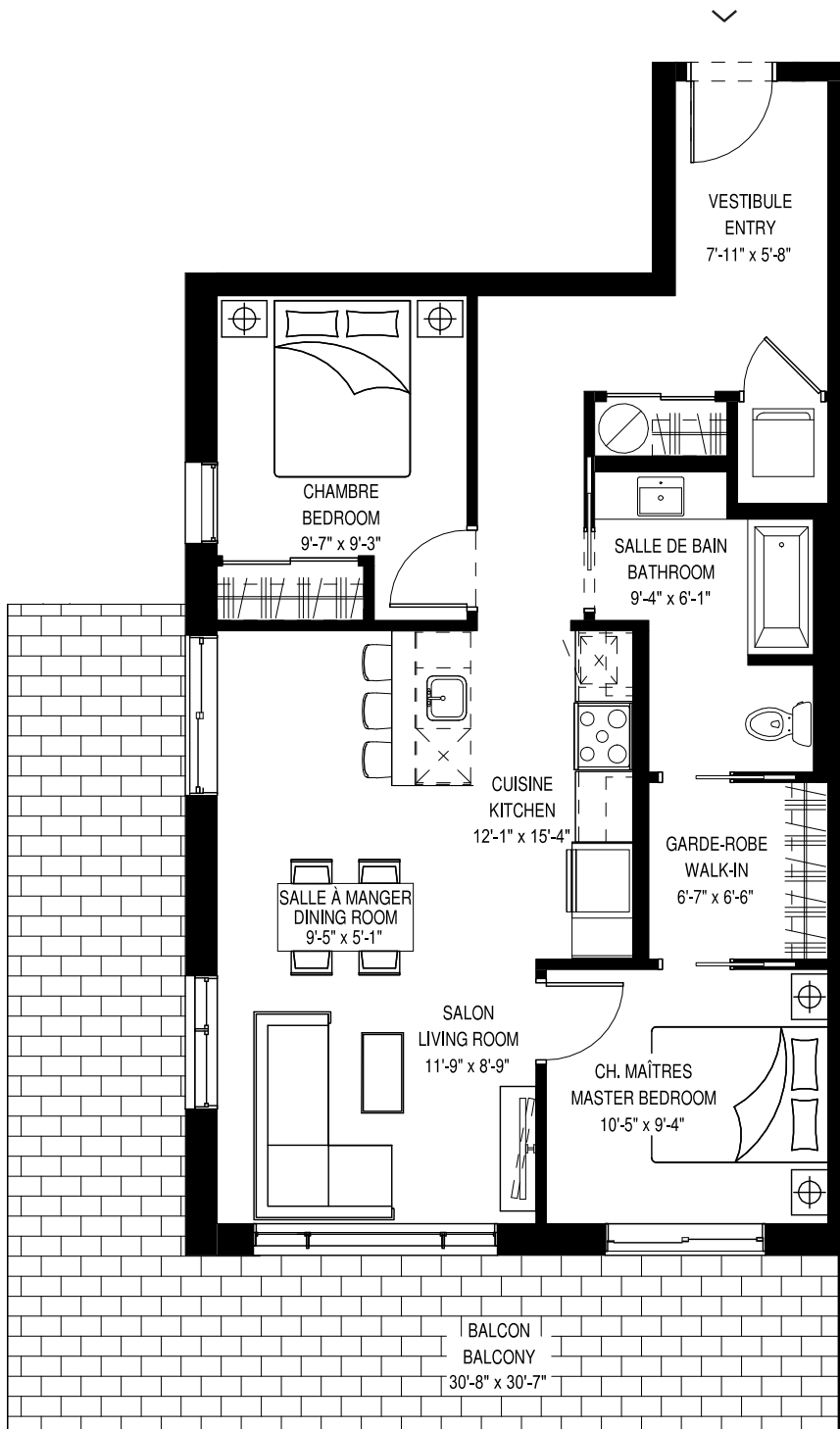
STUDIO

UNITÉS • UNITS Superficie • Area

374 pi² / sq. ft.

101 à/to 401
214 à/to 414





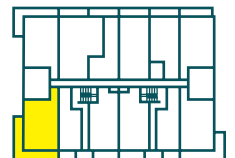
Rez-de-chaussée
Ground floor

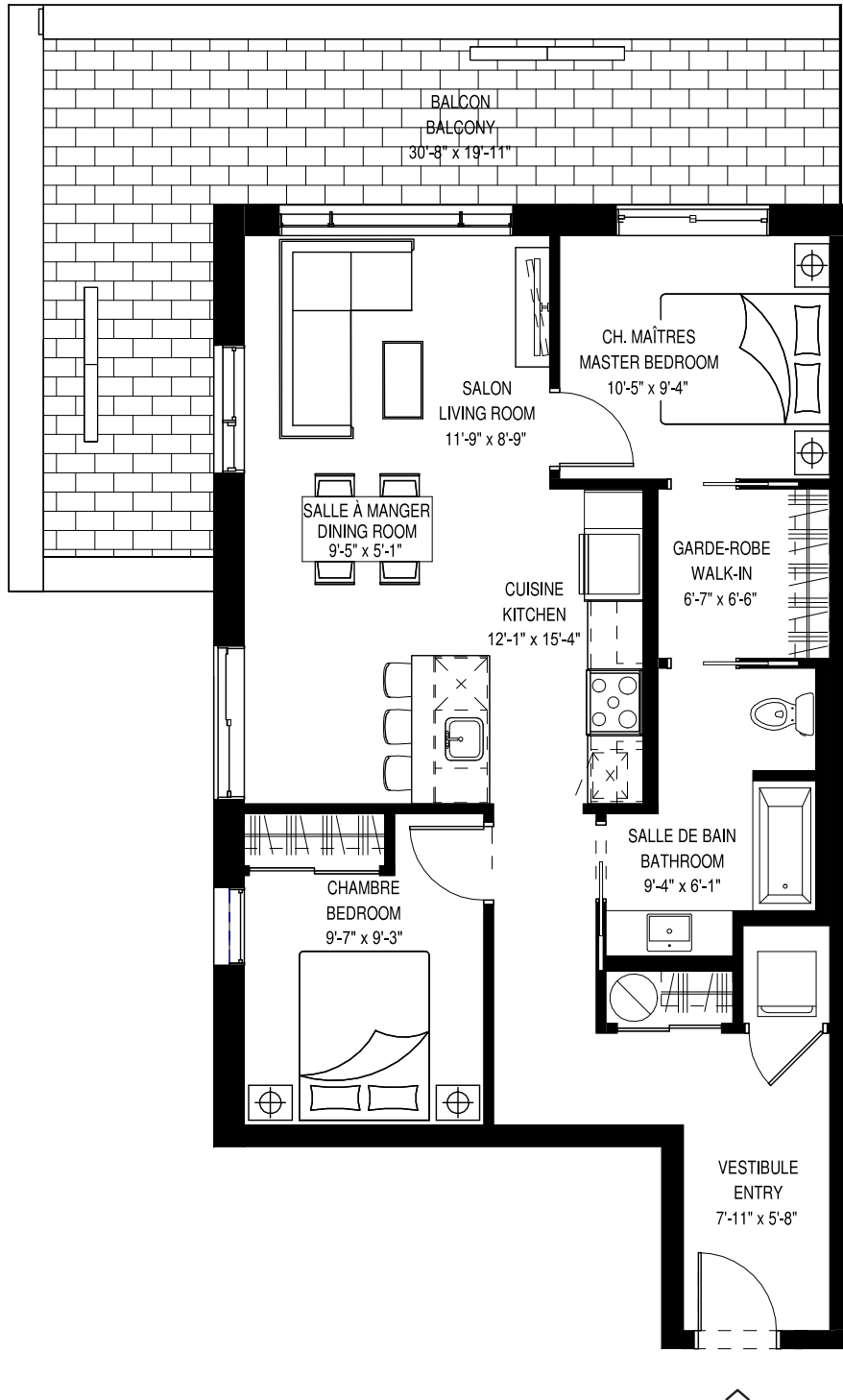
2 CHAMBRES • 2 BEDROOMS

UNITÉ • UNIT
102

Superficie • Area
Terrasse • Terrace
Total

918 pi² / sq. ft.
359 pi² / sq. ft.
1 277 pi² / sq. ft.





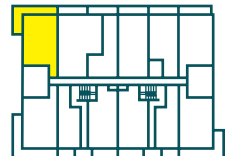
Rez-de-chaussée
Ground floor

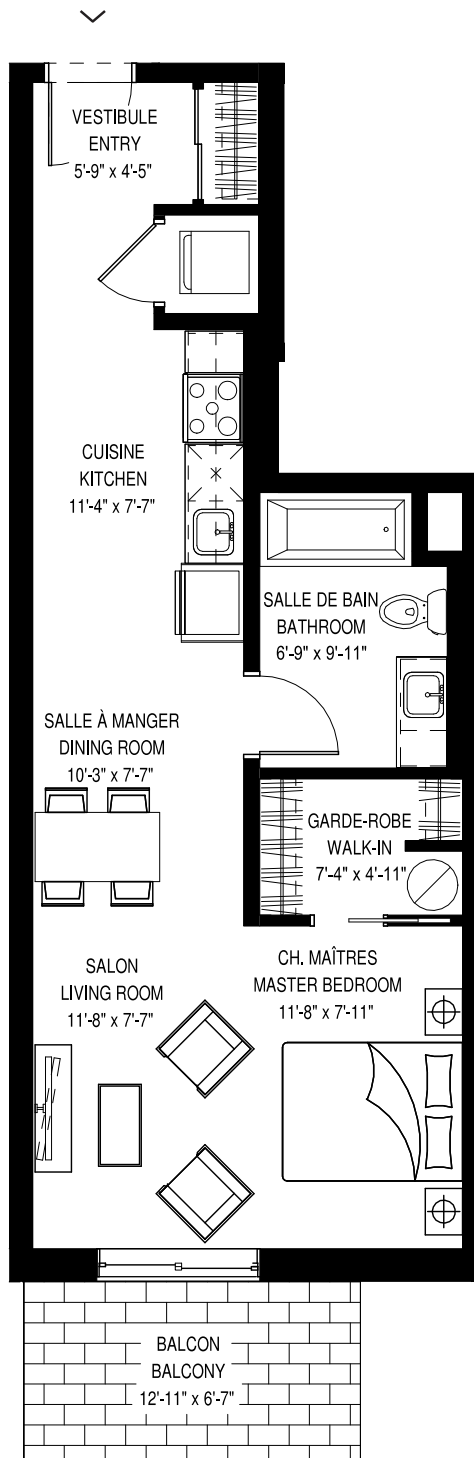
2 CHAMBRES • 2 BEDROOMS

UNITÉ • UNIT
103

Superficie • Area
Terrasse • Terrace
Total

918 pi² / sq. ft.
285 pi² / sq. ft.
1 203 pi² / sq. ft.





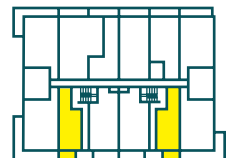
Rez-de-chaussée
Ground floor

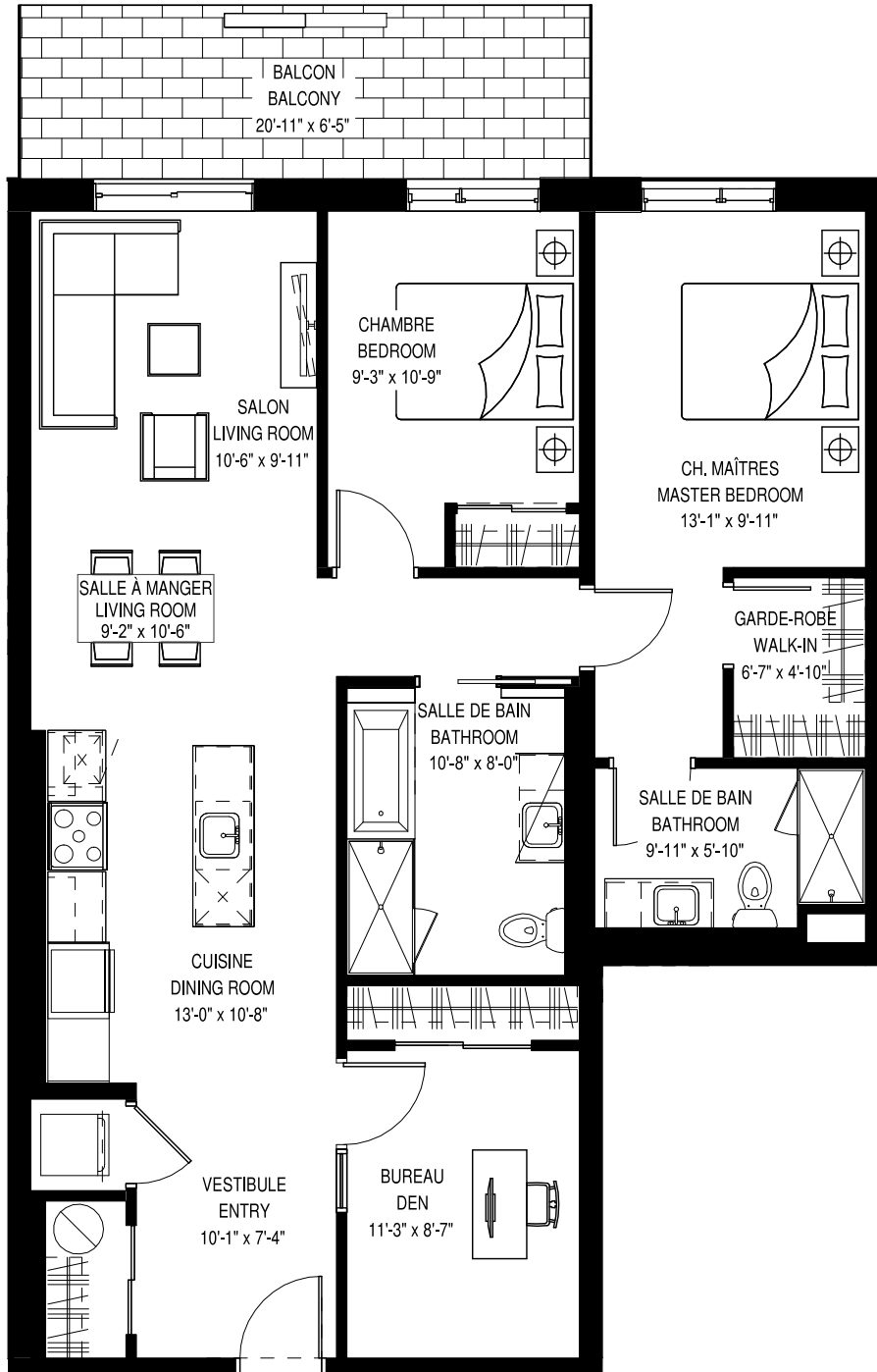
STUDIO

UNITÉ • UNIT
104, 110

Superficie • Area
Terrasse • Terrace
Total

626 pi² / sq. ft.
80 pi² / sq. ft.
706 pi² / sq. ft.





Rez-de-chaussée
Ground floor

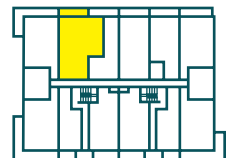
3 CHAMBRES* • 3 BEDROOMS*

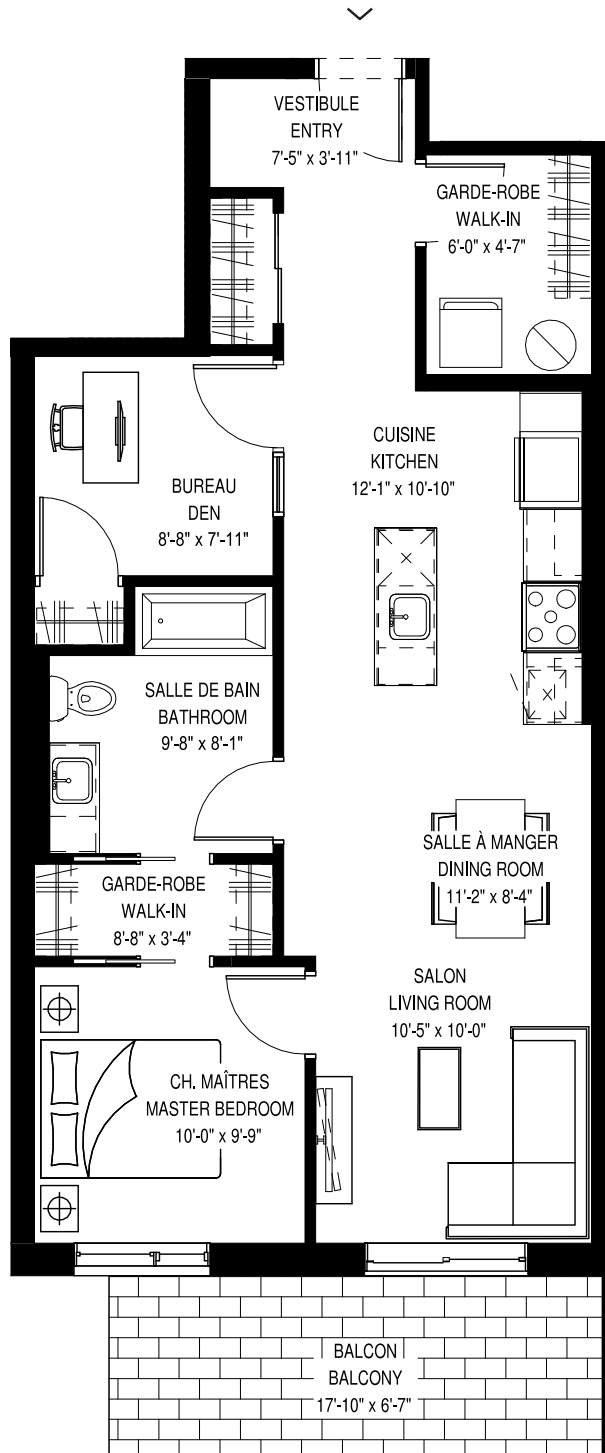
*La 3^e chambre est une chambre intérieure. *The 3rd bedroom is an interior room

UNITÉ • UNIT
105

Superficie • Area
Terrasse • Terrace
Total

1 223 pi² / sq. ft.
134 pi² / sq. ft.
1 357 pi² / sq. ft.





Rez-de-chaussée
Ground floor

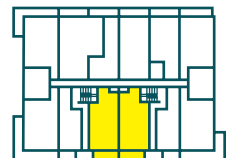
2 CHAMBRES* • 2 BEDROOMS*

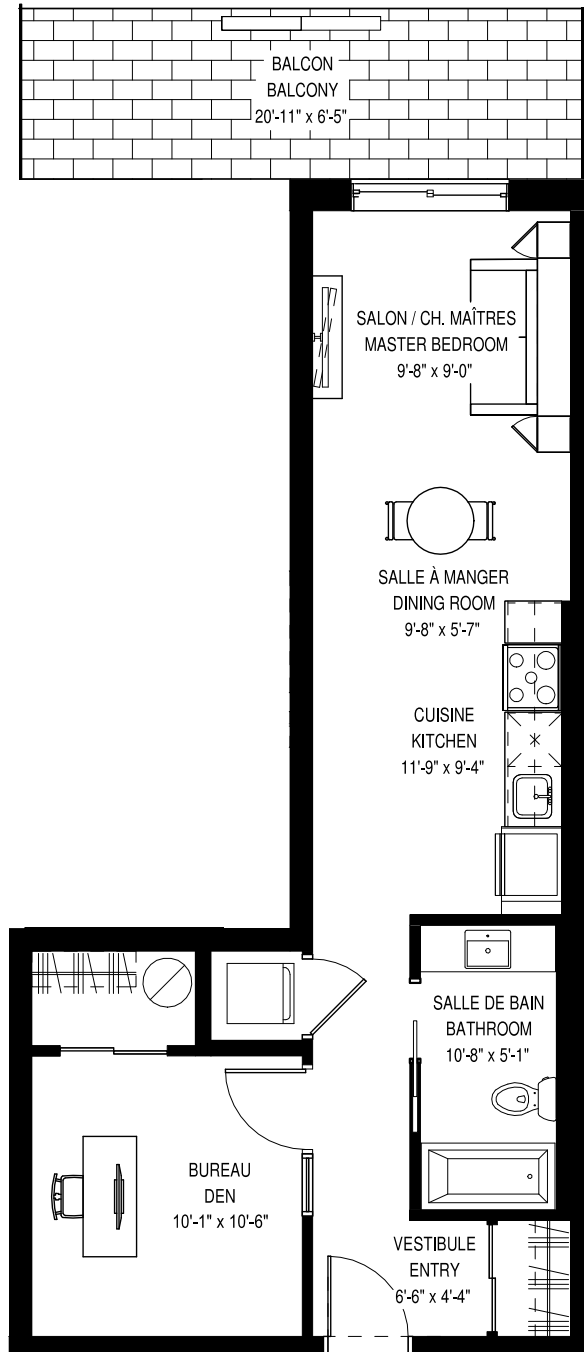
*La 2^e chambre est une chambre intérieure. *The 2nd bedroom is an interior room

UNITÉS • UNITS
106, 108

Superficie • Area
Terrasse • Terrace
Total

859 pi² / sq. ft.
117 pi² / sq. ft.
976 pi² / sq. ft.





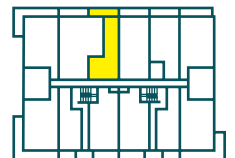
Rez-de-chaussée
Ground floor

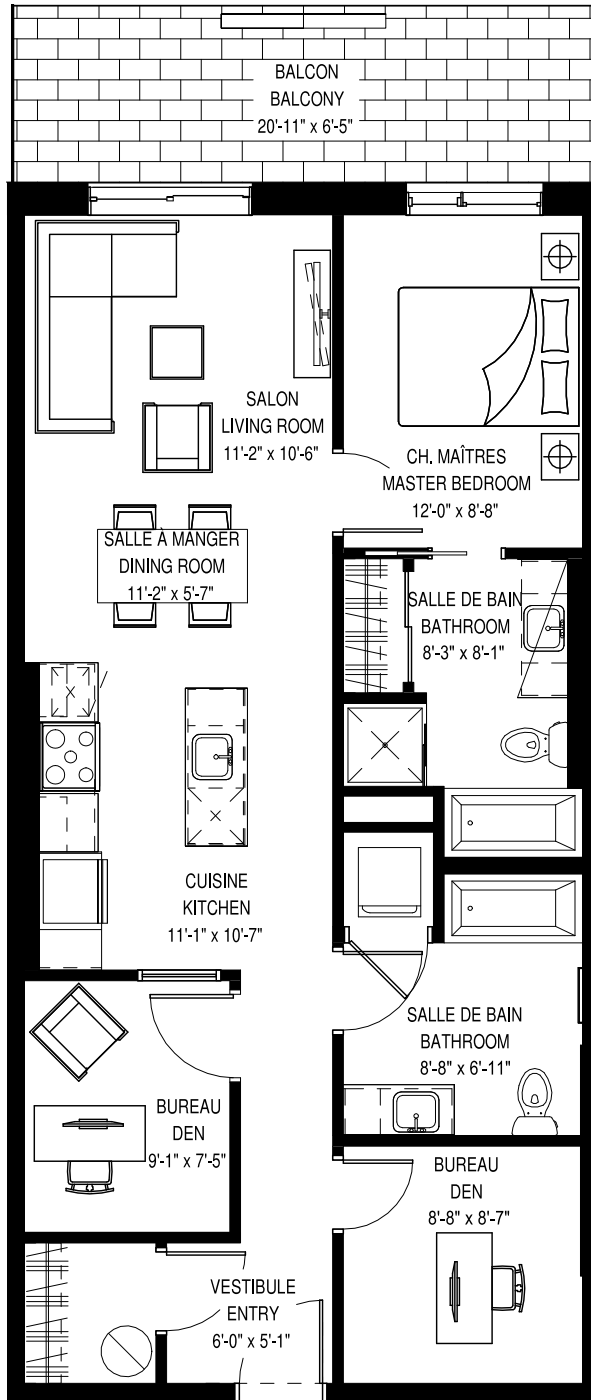
1 CHAMBRE INTÉRIEURE • 1 INTERIOR BEDROOM

UNITÉ • UNIT
107

Superficie • Area
Terrasse • Terrace
Total

627 pi² / sq. ft.
134 pi² / sq. ft.
761 pi² / sq. ft.





Rez-de-chaussée
Ground floor

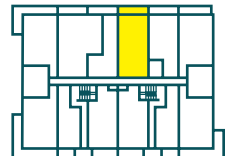
2 CHAMBRES* + BUREAU • 2 BEDROOMS* + DEN

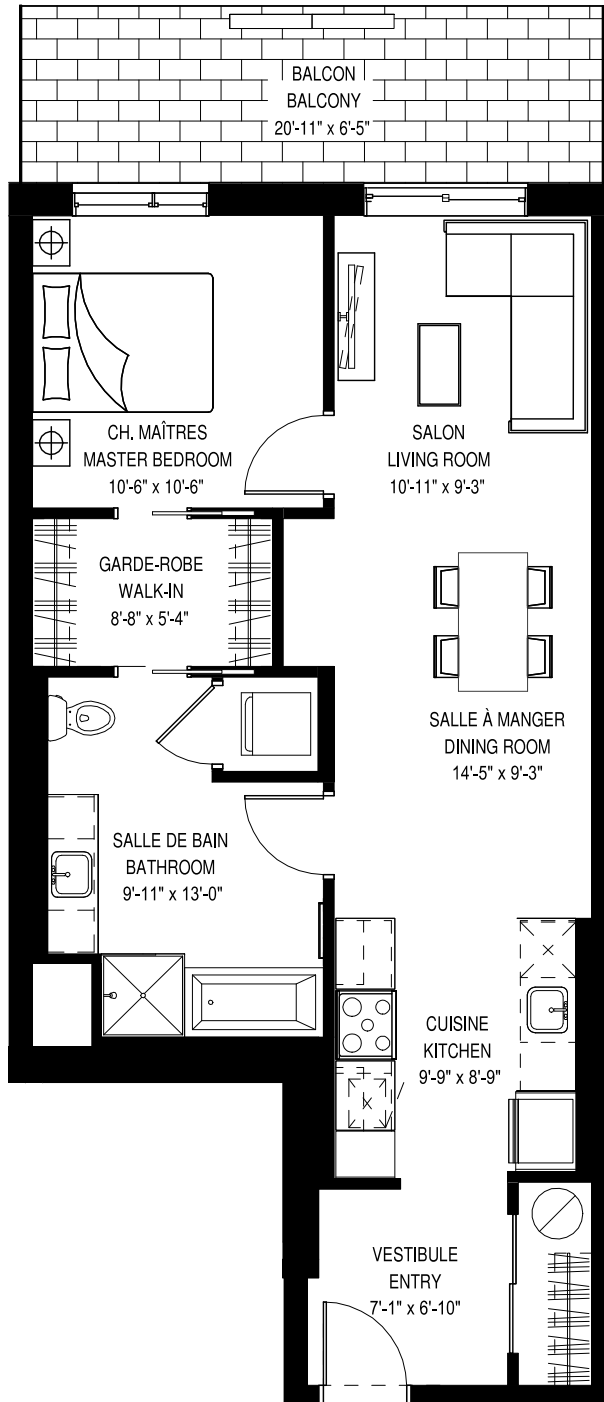
*La 2^e chambre est une chambre intérieure. *The 2nd bedroom is an interior room

UNITÉ • UNIT
109

Superficie • Area
Terrasse • Terrace
Total

923 pi² / sq. ft.
134 pi² / sq. ft.
1 057 pi² / sq. ft.





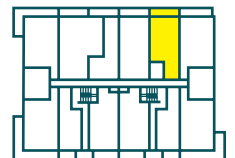
Rez-de-chaussée
Ground floor

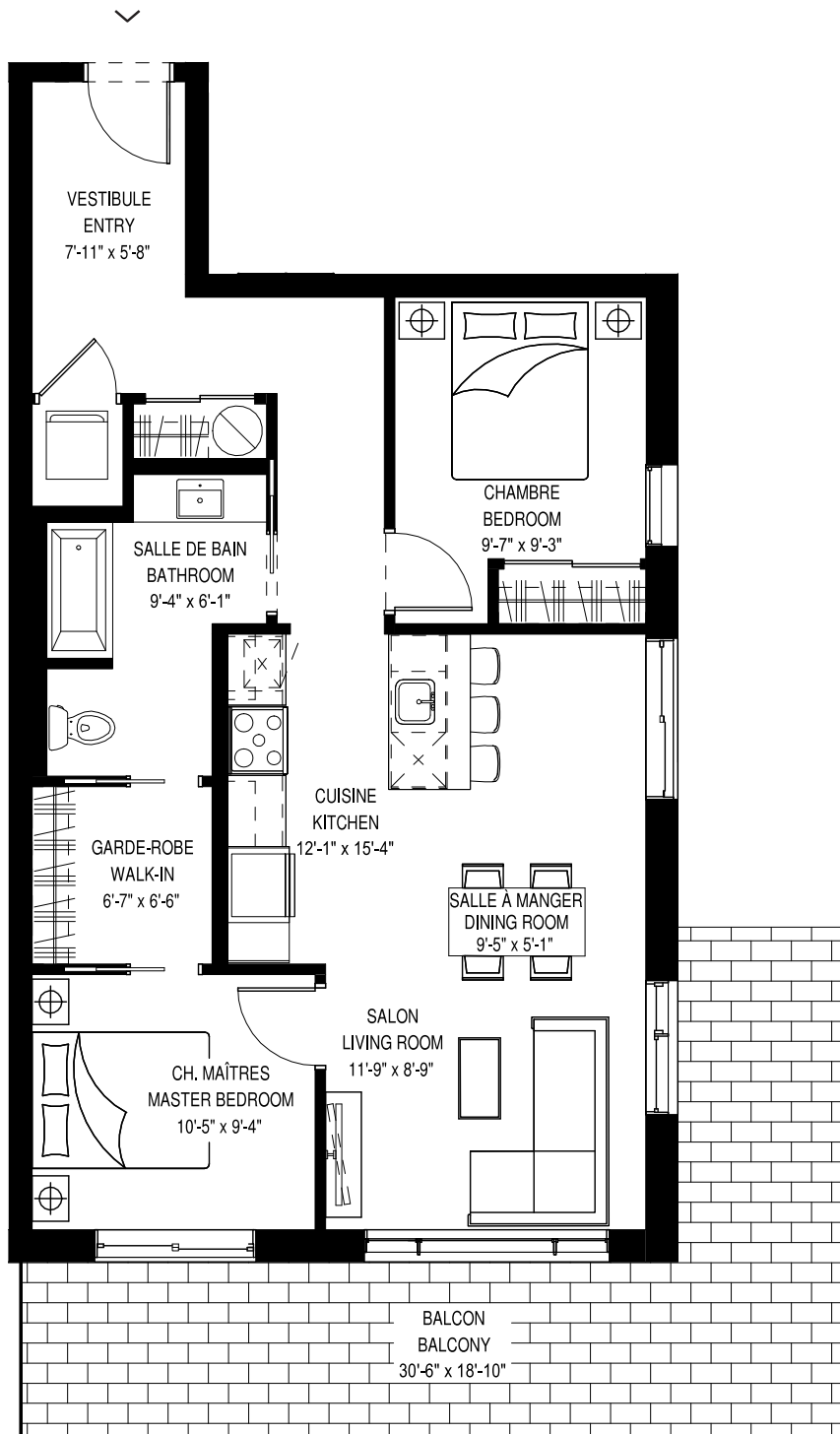
1 CHAMBRE • 1 BEDROOM

UNITÉ • UNIT
111

Superficie • Area
Terrasse • Terrace
Total

822 pi² / sq. ft.
134 pi² / sq. ft.
956 pi² / sq. ft.





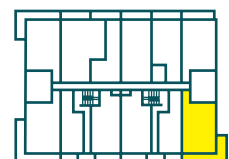
Rez-de-chaussée
Ground floor

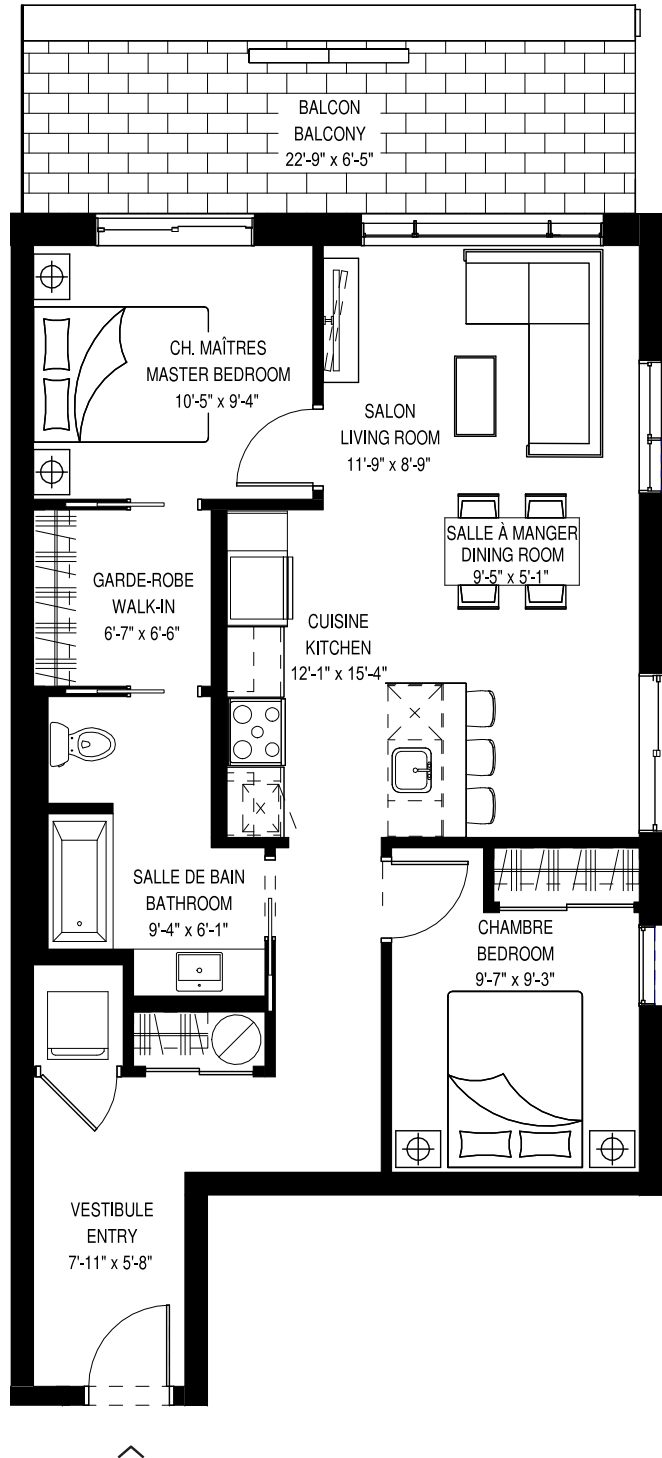
2 CHAMBRES • 2 BEDROOMS

UNITÉ • UNIT
112

Superficie • Area
Terrasse • Terrace
Total

918 pi² / sq. ft.
282 pi² / sq. ft.
1 200 pi² / sq. ft.





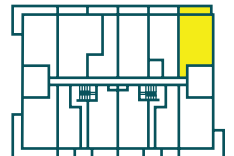
Rez-de-chaussée
Ground floor

2 CHAMBRES • 2 BEDROOMS

UNITÉ • UNIT
113

Superficie • Area
Terrasse • Terrace
Total

918 pi² / sq. ft.
146 pi² / sq. ft.
1 064 pi² / sq. ft.





2^e au 4^e étage / 2nd to 4th floor



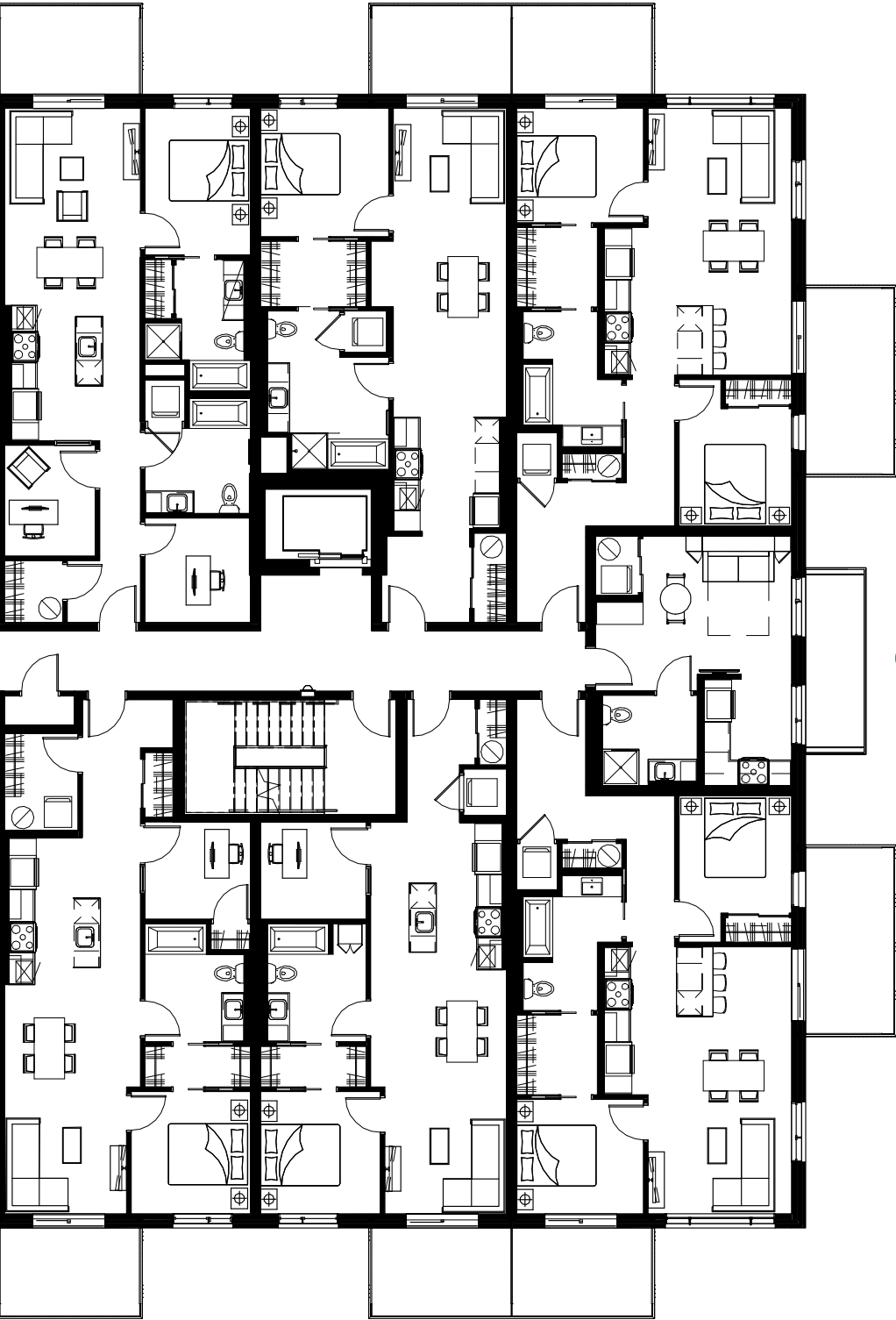
Les spécifications et les plans de plancher peuvent changer sans préavis.
SEO0 Specifications and floorplans subject to change without notice. E.&O.E.



X09

X11

X13



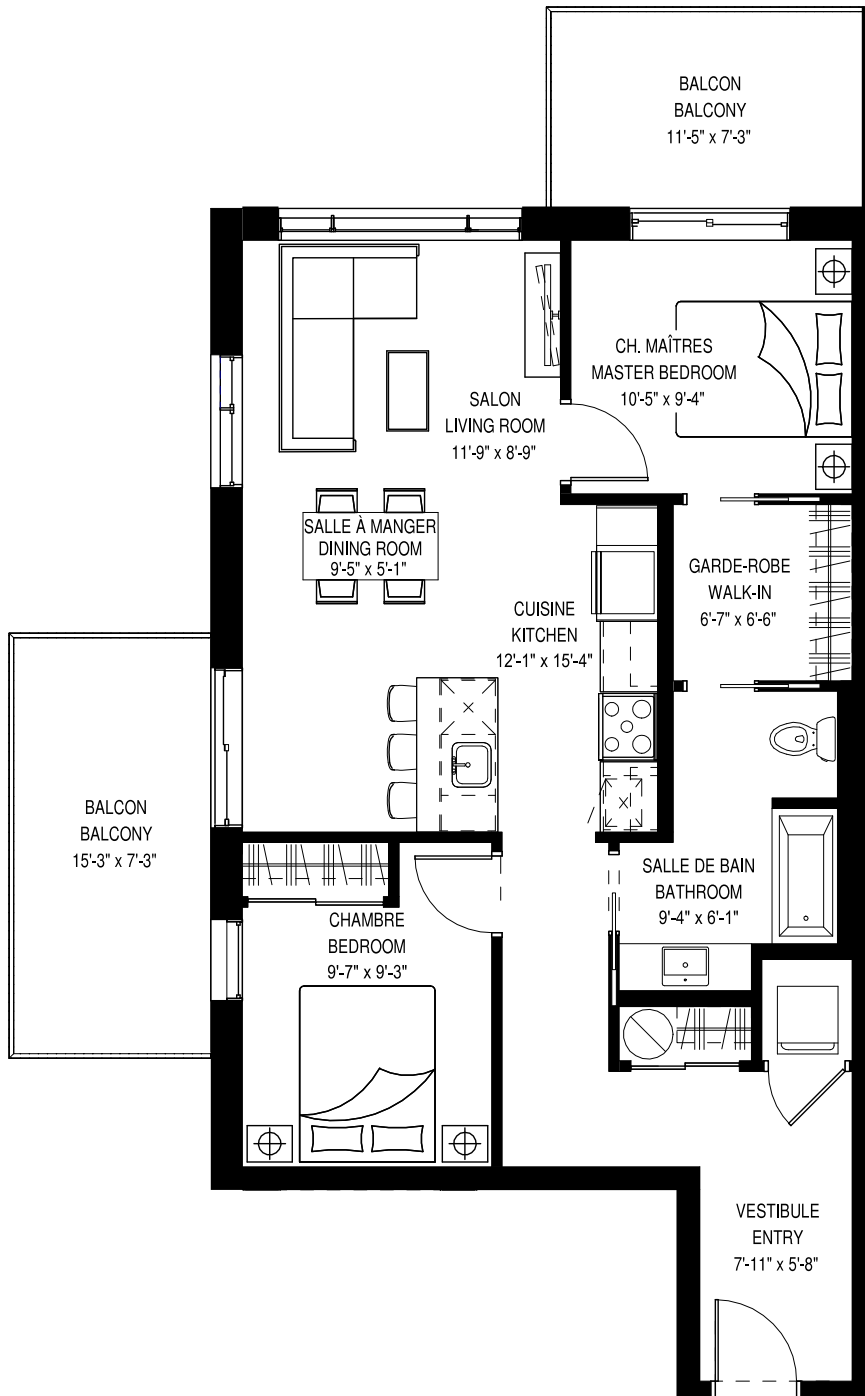
X14

X08

X10

X12

IMPASSE DU GRIFFON

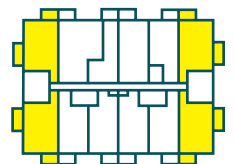


2^e au 4^e étage
2nd to 4th floor

2 CHAMBRES • 2 BEDROOMS

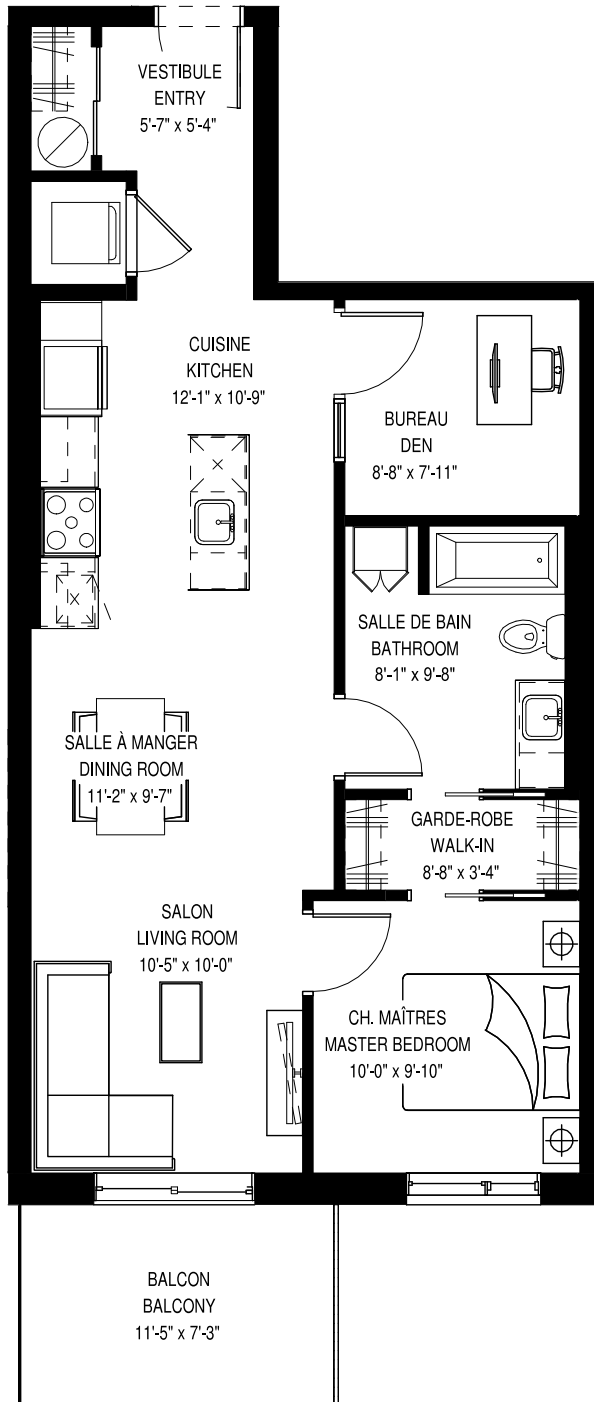
UNITÉS • UNITS	Superficie • Area Terrasse • Terrace Total
202 à/to 402	
203 à/to 403	
212 à/to 412	
213 à/to 413	

918 pi² / sq. ft.
193 pi² / sq. ft.
1 111 pi² / sq. ft.



Plan sujet à changement sans préavis. Les mesures sont approximatives.

Plan subject to change without notice. Measurements are approximate.



2^e au 4^e étage
2nd to 4th floor

2 CHAMBRES* • 2 BEDROOMS*

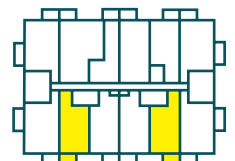
*La 2^e chambre est une chambre intérieure. *The 2nd bedroom is an interior room

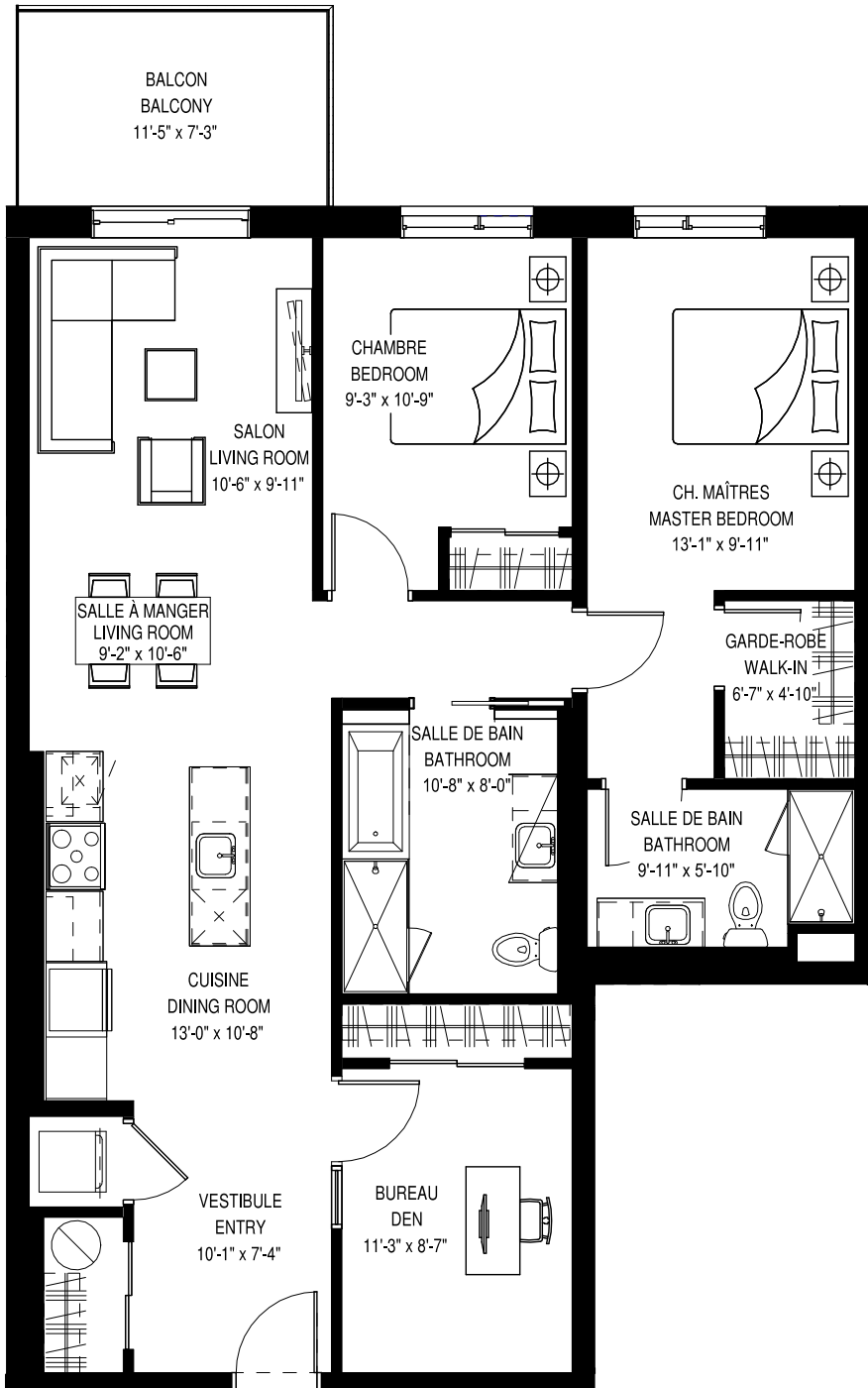
UNITÉS • UNITS

204 à/to 404
210 à/to 410

Superficie • Area
Terrasse • Terrace
Total

808 pi² / sq. ft.
83 pi² / sq. ft.
891 pi² / sq. ft.





2^e au 4^e étage
2nd to 4th floor

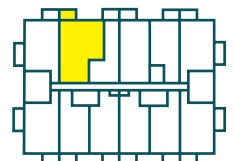
3 CHAMBRES* • 3 BEDROOMS*

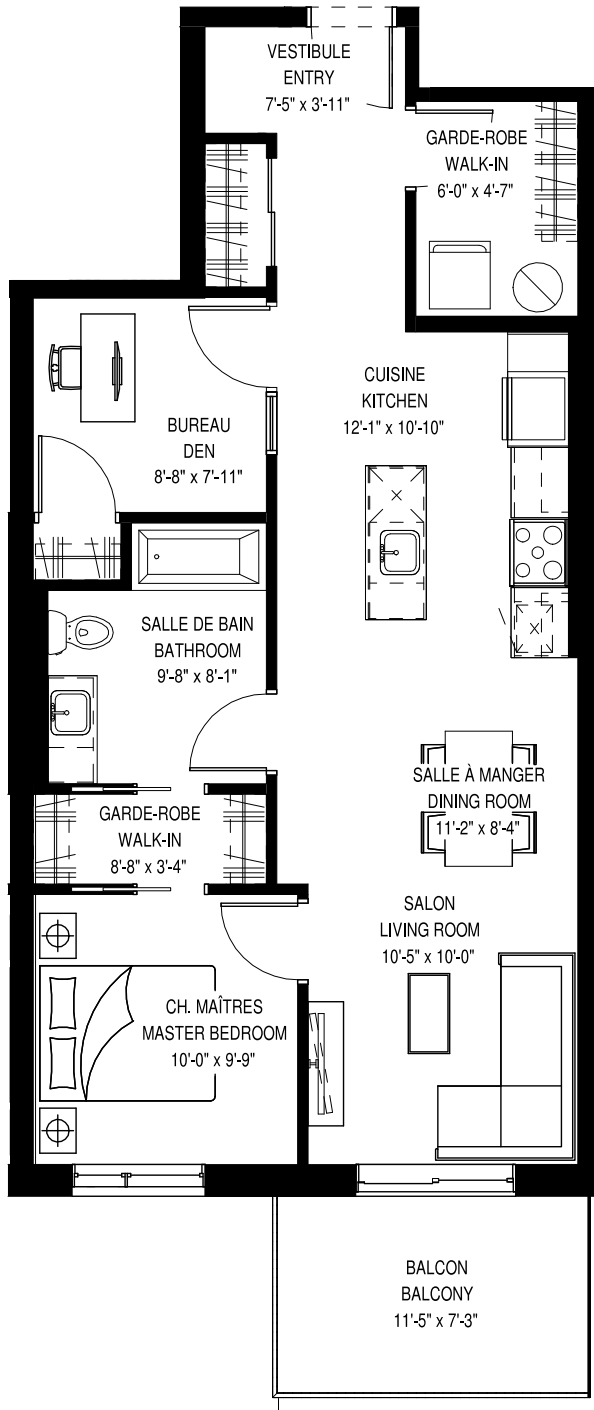
*La 3^e chambre est une chambre intérieure. *The 3rd bedroom is an interior room

UNITÉS • UNITS
205 à/to 405

Superficie • Area
Terrasse • Terrace
Total

1 223 pi² / sq. ft.
83 pi² / sq. ft.
1 306 pi² / sq. ft.





2^e au 4^e étage
2nd to 4th floor

2 CHAMBRES* • 2 BEDROOMS*

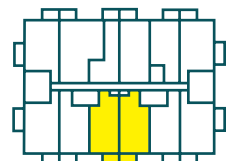
*La 2^e chambre est une chambre intérieure. *The 2nd bedroom is an interior room

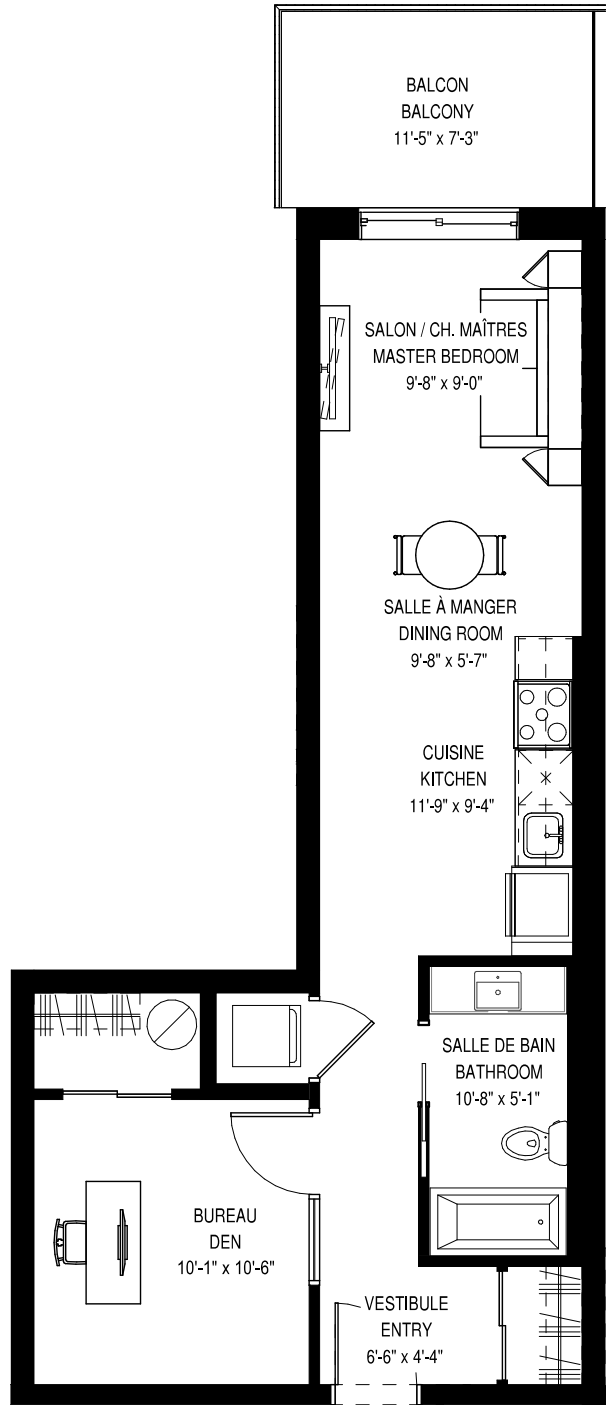
UNITÉS • UNITS

206 à/to 406
208 à/to 408

Superficie • Area
Terrasse • Terrace
Total

845 pi² / sq. ft.
83 pi² / sq. ft.
928 pi² / sq. ft.





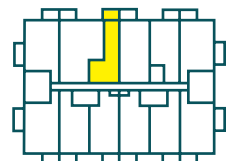
2^e au 4^e étage
2nd to 4th floor

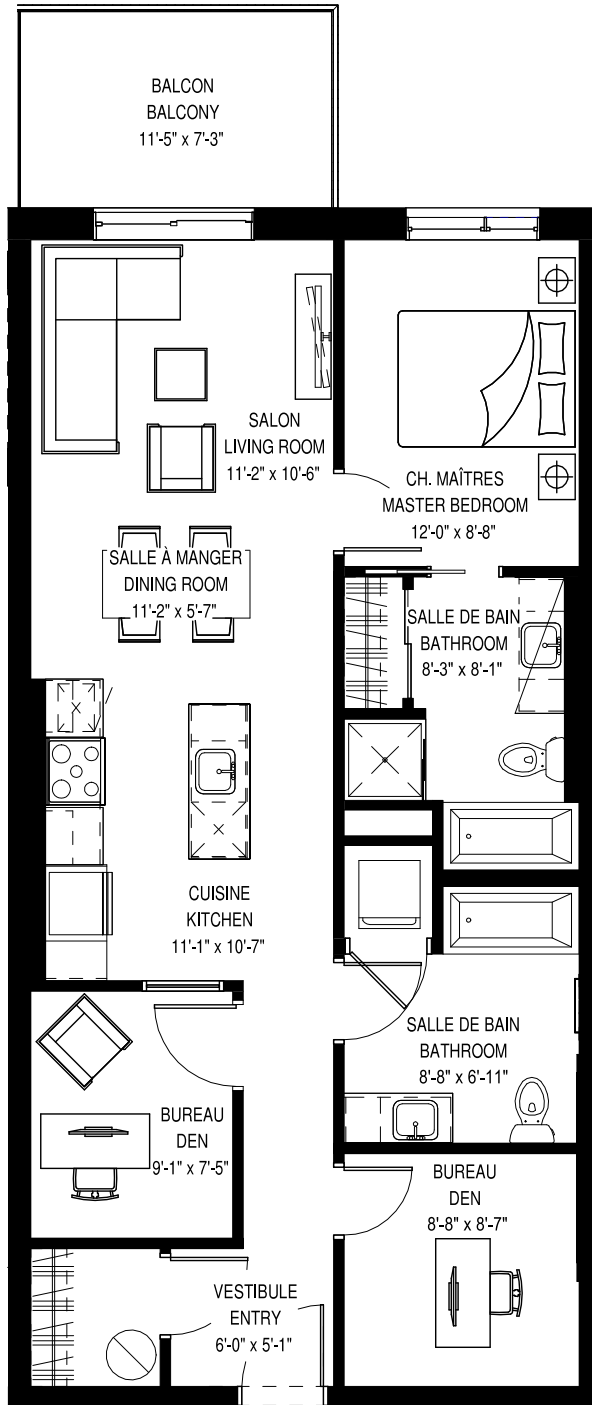
1 CHAMBRE INTÉRIEURE • 1 INTERIOR BEDROOM

UNITÉS • UNITS
207 à/to 407

Superficie • Area
Terrasse • Terrace
Total

627 pi² / sq. ft.
83 pi² / sq. ft.
710 pi² / sq. ft.





2^e au 4^e étage
2nd to 4th floor

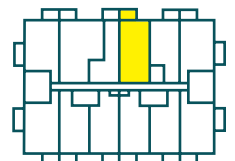
2 CHAMBRES* + BUREAU • 2 BEDROOMS* + DEN

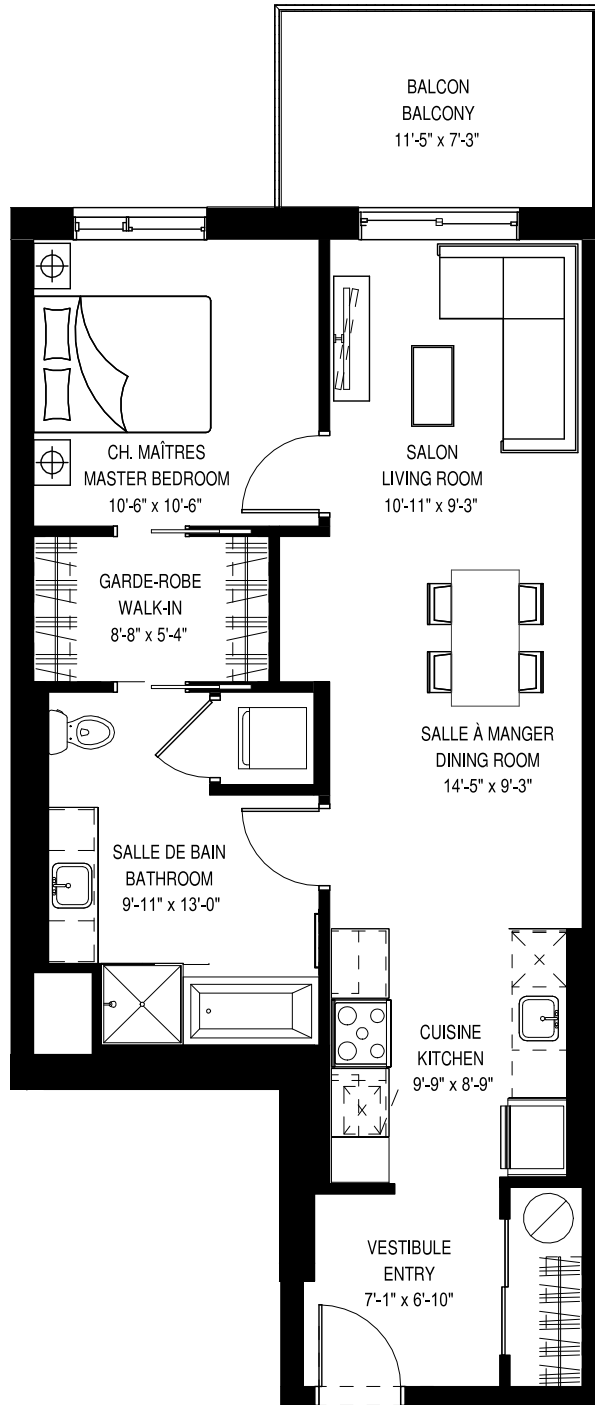
*La 2^e chambre est une chambre intérieure. *The 2nd bedroom is an interior room

UNITÉS • UNITS
209 à/to 409

Superficie • Area
Terrasse • Terrace
Total

923 pi² / sq. ft.
83 pi² / sq. ft.
1 006 pi² / sq. ft.





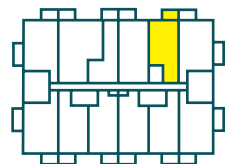
2^e au 4^e étage
2nd to 4th floor

1 CHAMBRE • 1 BEDROOM

UNITÉS • UNITS
211 à/to 411

Superficie • Area
Terrasse • Terrace
Total

822 pi² / sq. ft.
83 pi² / sq. ft.
905 pi² / sq. ft.





**Bienvenue
chez**

VOUS



**Welcome to
Champlain**

Champlain⁺

VILLAGE URBAIN • URBAN VILLAGE

819 800-3949
brigil.com

brigil