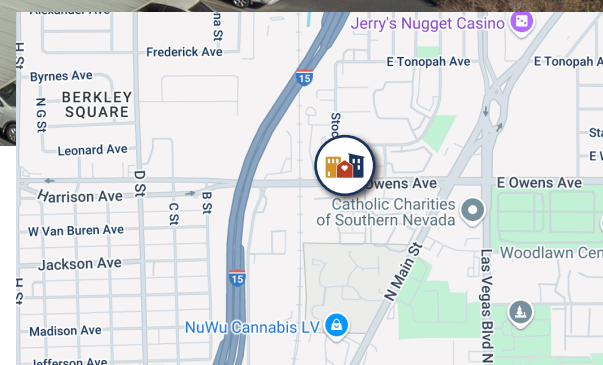




**UPDATED:**  
06/16/2025

# SKY VIEW PINES

## FAMILY APARTMENTS



**21 West Owens Avenue, Las Vegas, NV 89030**

### PROPERTY FEATURES

- 24-Hour Emergency Maintenance
- On-Site Resident Services
- Online Payments
- All Utilities Included (incl. gas and electric)
- Smoke-Free Community
- In-Unit Washer and Dryer
- Courtyard/Picnic Area
- Computer Lab
- Covered Parking
- Fitness Center
- Community Rooms
- Playground
- Pool
- Spa
- Dog Park



(702) 410-2761 • TTY-(800) 326-6868 • Property hours may vary • To schedule a visit, e-mail [skyviewpineslv@nevadahand.org](mailto:skyviewpineslv@nevadahand.org)

Scan the QR code for more information!



# SKY VIEW PINES

FAMILY APARTMENTS  NEVADA HAND

## RENT AND INCOME REQUIREMENTS + FLOOR PLANS

### APPLICATION INFORMATION

#### Screening Fee:

\$26 per Adult HH Member

\$17 for Live-in-Aide

#### Holding Deposit:

\$250

#### Security Deposit:

\$600 or up to 1 Month Rent  
on Conditional Credit

#### Pet Fee:

\$250 per pet

*Weight & Breed Restrictions Apply*

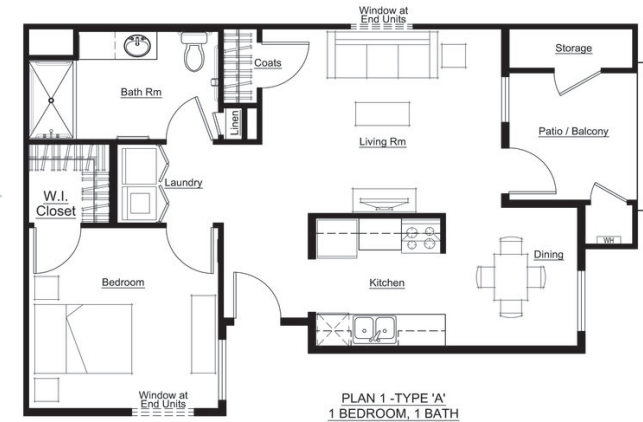
*Section 8 Vouchers Accepted\*\**

*\*Minimum income requirement  
does not apply to Section 8 holders.*

### 1 BED / 1 BATH • 754 Sq. Ft.

#### Annual Gross Income Limits\*

MONTHLY RENT	TOTAL # OF UNITS	MINIMUM	MAXIMUM	
			1-Person	2-Person
<b>\$573</b>	12	\$15,471	\$35,700	\$40,800
<b>\$765</b>	63	\$20,655	\$35,700	\$40,800
<b>\$956</b>	11	\$25,812	\$35,700	\$40,800
<b>\$1,350</b>	10	\$36,450	\$57,120	\$65,280



### 2 BED / 2 BATH • 1031 Sq. Ft.

#### Annual Gross Income Limits\*

MONTHLY RENT	TOTAL # OF UNITS	MINIMUM	MAXIMUM	
			2-Person	4-Person
<b>\$688</b>	8	\$18,576	\$40,800	\$51,000
<b>\$918</b>	28	\$24,786	\$40,800	\$51,000
<b>\$1,147</b>	7	\$30,969	\$40,800	\$51,000
<b>\$1,610</b>	5	\$43,470	\$65,280	\$81,600

