



SKY VIEW PINES

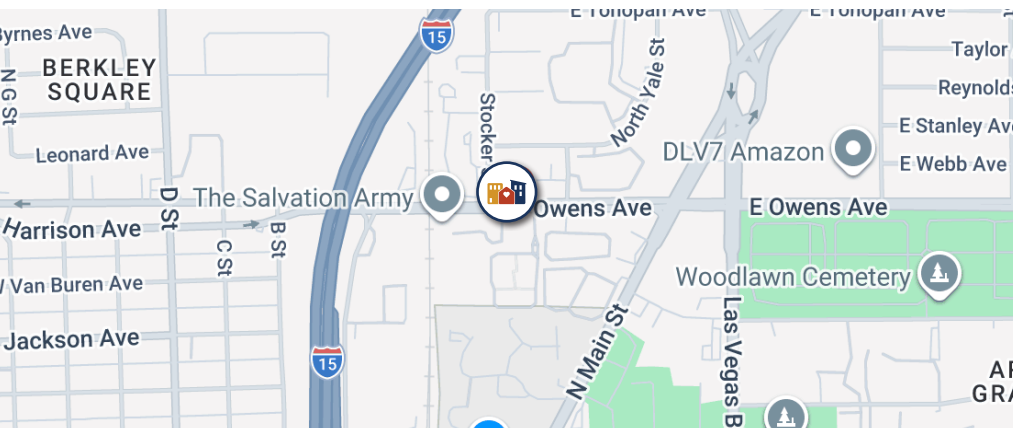
FAMILY APARTMENTS



ALL UTILITIES INCLUDED (INCLUDING ELECTRIC AND GAS)

PROPERTY FEATURES

- 24-Hour Emergency Maintenance
- On-Site Resident Services
- Online Payments
- **All Utilities Included (incl. gas and electric)**
- Smoke-Free Community
- In-Unit Washer and Dryer
- Courtyard/Picnic Area
- Computer Lab
- Covered Parking
- Fitness Center
- Community Rooms
- Playground
- Pool
- Spa
- Dog Park



21 West Owens Avenue
Las Vegas, NV 89030

(702) 410-2761
TTY-(800) 326-6868

Property hours may vary

UPDATED: 6/10/2026



For more info/to schedule a visit, scan the QR code or e-mail
skyviewpineslv@nevadahand.org

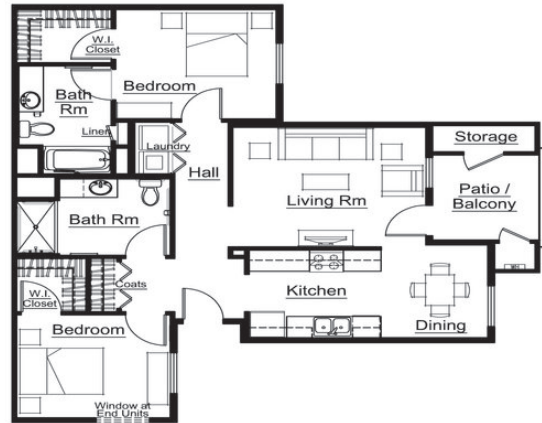
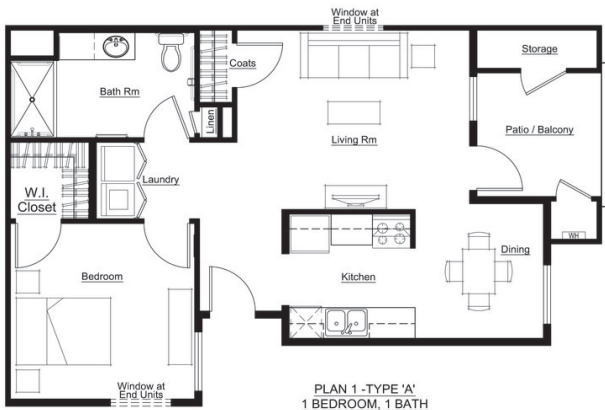




SKY VIEW PINES

FAMILY APARTMENTS

**RENT AND INCOME
REQUIREMENTS
+ FLOOR PLANS**



1 BED / 1 BATH • 754 Sq. Ft.

Annual Gross Income Limits*

MONTHLY RENT	TOTAL # OF UNITS	MINIMUM	MAXIMUM	
			1-Person	2-Person
\$593	12	\$14,232	1-Person	\$36,950
			2-Person	\$42,200
\$791	63	\$18,984	1-Person	\$36,950
			2-Person	\$42,200
\$989	11	\$23,736	1-Person	\$36,950
			2-Person	\$42,200
\$1,450	10	\$34,800	1-Person	\$59,120
			2-Person	\$67,520

2 BED / 2 BATH • 1031 Sq. Ft.

Annual Gross Income Limits*

MONTHLY RENT	TOTAL # OF UNITS	MINIMUM	MAXIMUM	
			2-Person	4-Person
\$712	8	\$17,088	2-Person	\$42,200
			4-Person	\$52,750
\$950	28	\$22,800	2-Person	\$42,200
			4-Person	\$52,750
\$1,187	7	\$28,488	2-Person	\$42,200
			4-Person	\$52,750
\$1,700	4	\$40,800	2-Person	\$67,520
			4-Person	\$84,400

APPLICATION INFORMATION

Section 8 Vouchers Accepted**

Screening Fee:
\$26 per Adult HH Member
\$17 for Live-in-Aide

Holding Deposit:
\$250

Security Deposit:
\$600 or up to 1 Month Rent
on Conditional Credit

Pet Fee:
\$250 per pet
Weight & Breed Restrictions Apply



*Minimum income requirement does not apply to Section 8 holders.