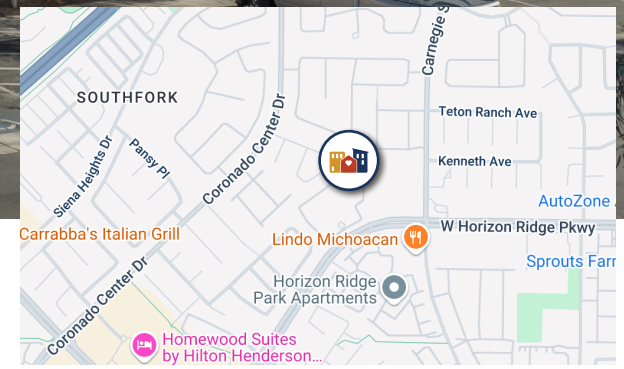




UPDATED:
06/16/2026



STEWART PINES I&II

SENIOR APARTMENTS  NEVADA HAND

1351 East Stewart Avenue, Las Vegas, NV 89101

PROPERTY FEATURES

- 24-Hour Emergency Maintenance
- On-Site Resident Services
- Water, Trash and Sewer Included
- Online Payments
- Smoke-Free Community
- Computer Lab
- Covered Parking
- Fitness Center
- Community Rooms
- Library
- Free Food Pantry



STEWART PINES I&II

SENIOR APARTMENTS  NEVADA HAND

RENT AND INCOME REQUIREMENTS + FLOOR PLANS

APPLICATION INFORMATION

Screening Fee:

\$26 per Adult HH Member
\$17 for Live-in-Aide

Holding Deposit:

\$250

Security Deposit:

\$500 or up to 1 Month Rent
on Conditional Credit

Pet Fee:

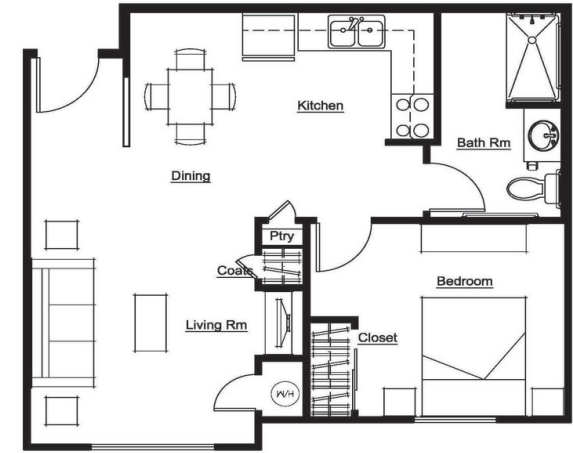
\$250 per pet

Weight & Breed Restrictions Apply

*Section 8 Vouchers Accepted***

**Minimum income requirement does not apply to Section 8 holders.*

1 BED / 1 BATH • 611-659 Sq. Ft.				
Annual Gross Income Limits*				
MONTHLY RENT	TOTAL # OF UNITS	MINIMUM	MAXIMUM	
\$508	5	\$15,240	1-Person	\$21,450
			2-Person	\$24,500
\$700	31	\$21,000	1-Person	\$28,560
			2-Person	\$32,640
\$781	12	\$21,087	1-Person	\$35,700
			2-Person	\$40,800



2 BED / 1 BATH • 611-659 Sq. Ft.				
Annual Gross Income Limits*				
MONTHLY RENT	TOTAL # OF UNITS	MINIMUM	MAXIMUM	
\$608	3	\$18,240	1-Person	\$21,450
			2-Person	\$24,500
\$838	33	\$25,140	1-Person	\$28,560
			2-Person	\$32,640
\$945	37	\$25,515	1-Person	\$35,700
			2-Person	\$40,800

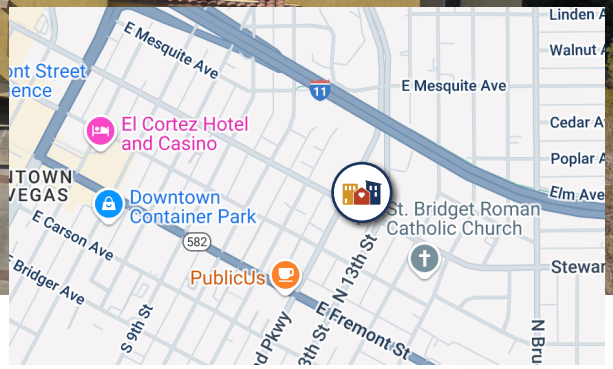




EQUAL HOUSING OPPORTUNITY



UPDATED: 06/16/2025



233 North 13th Street, Las Vegas, NV 89101

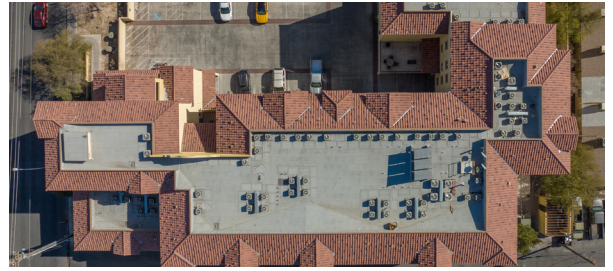
ALL UTILITIES INCLUDED (INCL. ELECTRIC AND GAS)

STEWART PINES III

SENIOR APARTMENTS  NEVADA HAND

PROPERTY FEATURES

- 24-Hour Emergency Maintenance
- On-Site Resident Services
- All Utilities Included (incl. gas and electric)
- Online Payments
- Smoke-Free Community
- Computer Lab
- Covered Parking
- Fitness Center
- Community Rooms
- Library
- Free Food Pantry



(702) 598-0420 • TTY-(800) 326-6868 • Property hours may vary • To schedule a visit, e-mail stewartpineslv@nevadahand.org

Scan the QR code for more information!



STEWART PINES III

SENIOR APARTMENTS  NEVADA HAND

RENT AND INCOME REQUIREMENTS + FLOOR PLANS

APPLICATION INFORMATION

Screening Fee:

\$26 per Adult HH Member
\$17 for Live-in-Aide

Holding Deposit:

\$250

Security Deposit:

\$500 or up to 1 Month Rent
on Conditional Credit

Pet Fee:

\$250 per pet

Weight & Breed Restrictions Apply

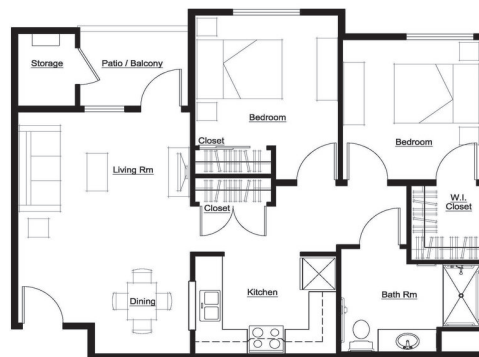
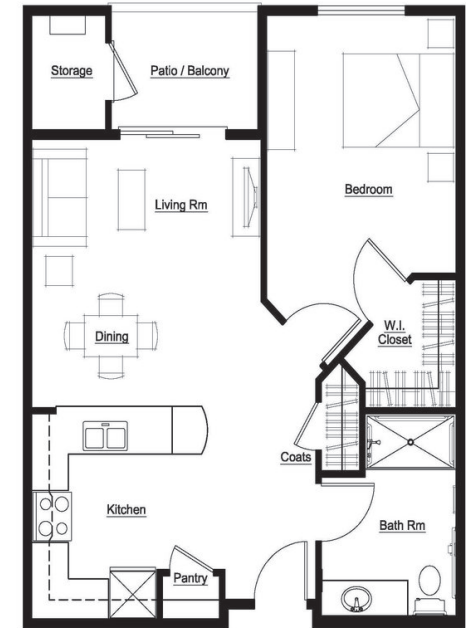
*Section 8 Vouchers Accepted***

**Minimum income requirement does not apply to Section 8 holders.*

1 BED / 1 BATH • 794 Sq. Ft.

Annual Gross Income Limits*

MONTHLY RENT	TOTAL # OF UNITS	MINIMUM	MAXIMUM	
			1-Person	2-Person
\$573	1	\$15,471	1-Person	\$21,450
			2-Person	\$24,500
\$956	50	\$25,812	1-Person	\$35,700
			2-Person	\$40,800



2 BED / 1 BATH • 943 Sq. Ft.

Annual Gross Income Limits*

MONTHLY RENT	TOTAL # OF UNITS	MINIMUM	MAXIMUM	
			1-Person	2-Person
\$688	1	\$18,576	1-Person	\$21,450
			2-Person	\$24,500
\$1,147	5	\$30,969	1-Person	\$35,700
			2-Person	\$40,800

